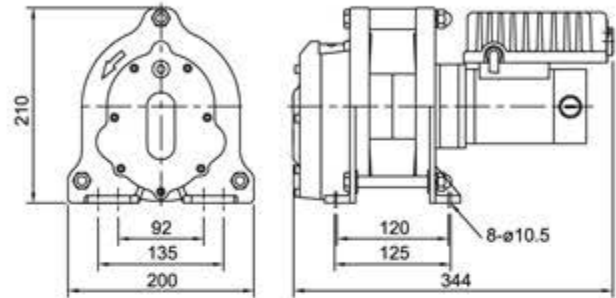




▲ LCWL080

- Lightweight and compact design for easy installation
- Dynamic and mechanical ratchet brake provides instant and safe braking
- Operates on standard household power supply
- Wire rope comes with a safety-latch weight hook
- Enclosed drum flanges to prevent rope becoming trapped between drum and support castings
- Emergency stop function switch is available upon request



## SPECIFICATIONS

MODEL		LCWL080	LCWL200	LCWL301	
Lifting capacity kg	wire rope top layer	80	200	300	
Lifting speed, m/min	first layer	16	11	16	
	top layer	25	16	25	
Motor rating IP44	type	Series Wound			
	output, kw x Amp	1ph, 110V	0.3 kw x 6 A	1.2 kw x 12 A	-
		1ph, 220-240V	0.3 kw x 3 A	1.5 kw x 7.5 A	2.3 kw x 11 A
Gear ratio		56:1	240:1	110:1	
Maximum lifting height, m		23	45	29	
Braking methods	for motor	Electromagnetic			
	for gear	Single mechanical ratchet	Double mechanical ratchets		
Wire rope w/hook	size, mm x m	* 4 x 24	* 5 x 46	* 6 x 30	
	construction	6 x 19			
	breaking strength, kg	810	1,270	2,010	
	weight hook	CHW-0031			
Drum dimension, mm	length	46	97	97	
	drum dia.	70	95	95	
	flange dia.	158	190	190	
Mounting bolts pattern, mm x mm		120 x 90 125 x 135	142 x 94 152 x 135		
Standard accessory	weight hook	•			
	remote control	•			
	power lead	1.5 mm <sup>2</sup> x 3C x 3 m and industry plug		2.0 mm <sup>2</sup> x 6C x 10 m and industry plug	
Net weight, kg (standard version)		16	30	38	
Gross weight, kg		18	32	40	
Body dimension, mm (L x D x H)		344 x 200 x 210	413 x 210 x 270	501 x 210 x 270	
Box dimension, mm (L x D x H)		376 x 330 x 240	515 x 395 x 350	630 x 395 x 350	

**Note:** 1. Above performance ratings are based on 50Hz supply.

(60Hz motor available as option resulting in a reduction of lifting capacities by 20% and a speed increase of 20%)

2. \*\*\* Means standard version

### SOLUTION for REMOTE CONTROL LCWL200

- \* Remote control, CPB-313
  - Switch cord 1.25 mm<sup>2</sup> x 6C x 10 m
  - Pendant switch CPB-313
- Remote control, PB-417
  - Switch cord 1.25 mm<sup>2</sup> x 6C x 10 m
  - Pendant switch PB-417 w/an emergency stop button

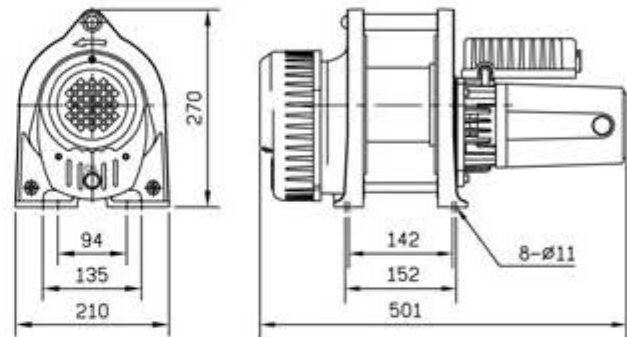
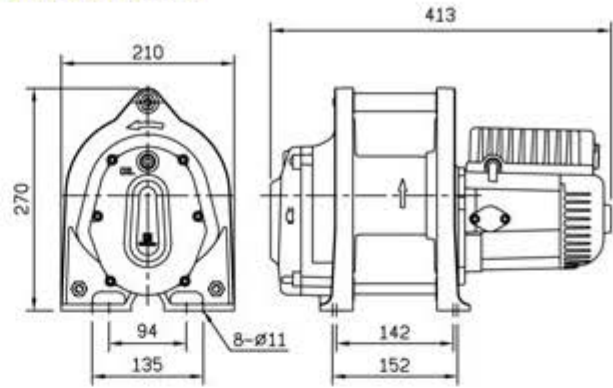


▲ LCWL200



▲ LCWL301

**DIMENSION mm/in**



**PERFORMANCE DATA**

Pulling load capacity for various inclines in kg						
MODEL	Level Surface	Gradient % inclines / angle in degrees				
		10% <sup>6°</sup>	20% <sup>11°</sup>	40% <sup>22°</sup>	60% <sup>31°</sup>	80% <sup>39°</sup>
LCWL080	670	360	260	170	130	110
LCWL200	1,670	890	650	410	320	280
LCWL301	2,500	1,340	970	620	490	410

1. All rating are based on the top layer. For each layer reduction on the drum pulling capacity is increased by 10%
2. Use a snatch block for double line operation, to increase line pull by approximately 85%
3. The pulling capacities are based on a pulling load and 15% has been allowed for friction (specific applications will vary)

MODEL	LCWL200		
Layer of Wire Rope	Lifting Capacity kg	Lifting Speed m/min	Total Rope on the Drum, m
1 <sup>st</sup>	320	11	5.8
2 <sup>nd</sup>	291	11.6	12.1
3 <sup>rd</sup>	267	12.6	19.1
4 <sup>th</sup>	246	13.7	26.6
5 <sup>th</sup>	229	14.7	34.7
6 <sup>th</sup>	213	15.8	43.4
7 <sup>th</sup>	200	16	46

MODEL	LCWL301		
Layer of Wire Rope	Lifting Capacity kg	Lifting Speed m/min	Total Rope on the Drum, m
1 <sup>st</sup>	478	16	4.8
2 <sup>nd</sup>	427	17.7	10.2
3 <sup>rd</sup>	386	19.6	16.2
4 <sup>th</sup>	353	21.5	22.7
5 <sup>th</sup>	324	23.4	29.8
6 <sup>th</sup>	300	25	30

Note: Above performance ratings are based on 50Hz supply.

**SOLUTION for REMOTE CONTROL LCWL301**

- 1). \* Remote control, CPB-313
  - Switch cord 2.0 mm<sup>2</sup> x 6C x 10 m
  - Pendant switch CPB-313
- 2). Remote control, PB-417
  - Switch cord 2.0 mm<sup>2</sup> x 6C x 10 m
  - Pendant switch PB-417 w/an emergency stop button



### ▲ LCWL205

Best solution for wind energy turbines for efficient and economical operation at great heights.

- Lightweight and compact design for easy installation
- Double mechanical ratchets brake provide instant and safe braking
- Operates on standard household power supply
- Wire rope comes with a safety-latch weight hook
- Enclosed drum flanges to prevent rope becoming trapped between drum and support castings
- Emergency stop function switch is available upon request

### SPECIFICATIONS

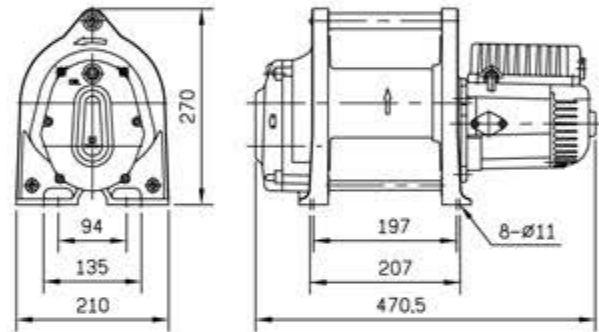
MODEL		LCWL205	LCWL305
Lifting capacity kg wire rope top layer		200	300
Lifting speed, m/min	first layer	11	16
	top layer	16	25
Motor rating IP44	type	Series Wound	
	output, 1ph, 110V kw x Amp 1ph, 220-240V	1.2 kw x 12 A 1.5 kw x 7.5 A	- 2.3 kw x 11 A
Gear ratio		240:1	110:1
Maximum lifting height, m		69	58
Braking methods	for motor	Electromagnetic	
	for gear	Double mechanical ratchets	
Wire rope w/hook	size, mm x m	* 5 x 71	* 6 x 60
	construction	6 x 19	
	breaking strength, kg	1,270	2,010
	weight hook	CHW-0031	
Drum dimension, mm	length	147	147
	drum dia.	95	95
	flange dia.	190	190
Mounting bolts pattern, mm x mm		197 x 94 207 x 135	
Standard accessory	weight hook		*
	remote control		*
	power lead	1.5 mm <sup>2</sup> 3C x 3 m and industry plug	-
Net weight, kg (standard version)		33	40
Gross weight, kg		35	42
Body dimension, mm (L x D x H)		407.5 x 210 x 270	556 x 210 x 270
Box dimension, mm (L x D x H)		545 x 395 x 350	630 x 395 x 350

**Note:** 1. Above performance ratings are based on 50Hz supply.  
(60Hz motor available as option resulting in a reduction of lifting capacities by 20% and a speed increase of 20%)  
2. \*\*\* Means standard version

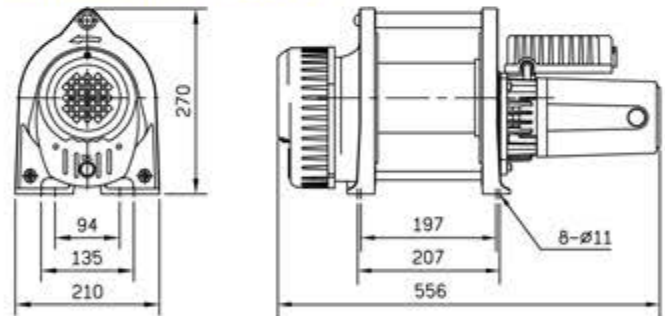
### SOLUTION for REMOTE CONTROL LCWL205

- \* Remote control, CPB-313
  - Switch cord 1.25 mm<sup>2</sup> x 6C x 10 m
  - Pendant switch CPB-313
- Remote control, PB-417
  - Switch cord 1.25 mm<sup>2</sup> x 6C x 10 m
  - Pendant switch PB-417 w/an emergency stop button

### DIMENSION mm/in LCWL205



### DIMENSION mm/in LCWL305



### SOLUTION for REMOTE CONTROL LCWL305

- \* Remote control, CPB-313
  - Switch cord 2.0 mm<sup>2</sup> x 6C x 10 m
  - Pendant switch CPB-313
- Remote control, PB-417
  - Switch cord 2.0 mm<sup>2</sup> x 6C x 10 m
  - Pendant switch PB-417 w/an emergency stop button



▲ LCWL305

**PERFORMANCE DATA**

**Pulling load capacity for various inclines in kg**

MODEL	Level Surface	Gradient % inclines / angle in degrees				
		10%6°	20%11°	40%22°	60%31°	80%39°
<b>LCWL205</b>	1,670	890	650	410	320	280
<b>LCWL305</b>	2,500	1,340	970	620	490	410

1. All rating are based on the top layer. For each layer reduction on the drum pulling capacity is increased by 10%
2. Use a snatch block for double line operation, to increase line pull by approximately 85%
3. The pulling capacities are based on a pulling load and 15% has been allowed for friction (specific applications will vary)

**Lifting Capacity, Lifting Speed and Rope Capacity**

MODEL	LCWL205		
Layer of Wire Rope	Lifting Capacity kg	Lifting Speed m/min	Total Rope on the Drum, m
1 <sup>st</sup>	320	11	8.9
2 <sup>nd</sup>	291	11.6	18.7
3 <sup>rd</sup>	267	12.6	29.4
4 <sup>th</sup>	246	13.7	41
5 <sup>th</sup>	229	14.7	53.5
6 <sup>th</sup>	213	15.8	66.9
7 <sup>th</sup>	200	16	71

MODEL	LCWL305		
Layer of Wire Rope	Lifting Capacity kg	Lifting Speed m/min	Total Rope on the Drum, m
1 <sup>st</sup>	478	16	7.5
2 <sup>nd</sup>	427	17.7	15.8
3 <sup>rd</sup>	386	19.6	25
4 <sup>th</sup>	353	21.5	35.1
5 <sup>th</sup>	324	23.4	46.1
6 <sup>th</sup>	300	25	60

Note: Above performance ratings are based on 50Hz supply.