



- Positive retention of wire rope on the drum
- Electromagnetic spring-applied failsafe brake
- Heavy duty high efficiency ball bearings on all running surfaces
- Planetary gears for maximum mechanical efficiency
- Enclosed drum flanges to prevent rope becoming trapped between drum and support steel plates
- Quiet running
- Emergency stop function switch is available upon request
- Low voltage control ass'y is available upon request

SPECIFICATIONS

LACW200 LACW250 LACW300

MODEL		CP-200	CP-250	CP-300
Lifting capacity kg wire rope top layer		200	250	300
Lifting speed, m/min	first layer	10		
	top layer	15		
Motor rating IP44	type	Induction		
	output, kw x poles	0.6 x 4	0.75 x 4	1.1 x 4
	1ph,110V			
	1ph,220-240V			
Gear ratio		43:1		
Maximum lifting height, m		29		
Braking methods		Electromagnetic		
Wire rope w/hook	size, mm x m	* 6 x 30 5 x 45		* 6 x 30
	construction	6 x 19		
	breaking strength, kg	2,010	1,270	2,010
	weight hook	CHW-0031		
Drum dimension, mm	length	110		
	drum dia.	94		
	flange dia.	154		
Mounting bolts	pattern, mm x mm	142 x 142 ; 142 x 94		
Standard accessory	weight hook	•		
	remote control	•		
	power lead	1.5 mm ² x 3C x 3 m and industry plug		
Net weight, kg (standard version)		32	34	38
Gross weight, kg		34	36.5	40
Body dimension, mm (L x D x H)		510 x 210 x 241	548 x 210 x 241	576 x 210 x 241
Box dimension, mm (L x D x H)		610 x 285 x 285	630 x 285 x 285	650 x 290 x 295

Note: 1. Above performance ratings are based on 50Hz supply.
(60Hz motor available as option resulting in a reduction of lifting capacities by 20% and a speed increase of 20%)
2. *** Means standard version

SOLUTION for REMOTE CONTROL

- 1). *Remote control, HOB-213
 - Switch cord 1.25 mm² x 5C x 3 m
 - Pendant switch HOB-213
- 2). Remote control, PB-331
 - Switch cord 1.25 mm² x 5C x 3 m
 - Pendant switch PB-331 w/an emergency stop button
- 3). Low voltage control ass'y LV-320
 - Remote control, PB-306
 - . Switch cord 1.25 mm² x 3C x 3 m
 - . Pendant switch PB-306 w/an emergency stop button
 - Low voltage control, LV-320

PERFORMANCE DATA

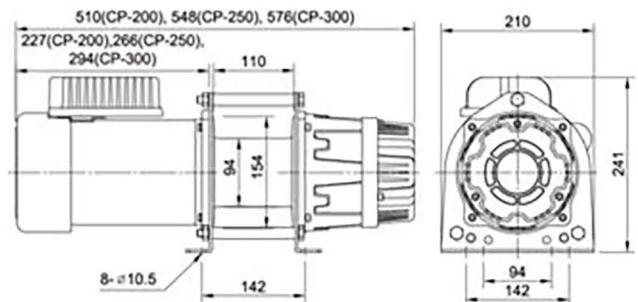
Pulling load capacity for various inclines in kg						
MODEL	Level Surface	Gradient % inclines / angle in degrees				
		10%6°	20%11°	40%22°	60%31°	80%39°
CP-200	1,670	890	650	410	320	280
CP-250	2,080	1,120	810	520	400	350
CP-300	2,500	1,340	970	620	490	410

1. All rating are based on the top layer. For each layer reduction on the drum pulling capacity is increased by 10%
2. Use a snatch block for double line operation, to increase line pull by approximately 85%
3. The pulling capacities are based on a pulling load and 15% has been allowed for friction (specific applications will vary)

Lifting Capacity, Lifting Speed and Rope Capacity					
Layer of Wire Rope	Lifting Capacity kg			Lifting Speed m/min	Total Rope on the Drum, m
MODEL	CP-200	CP-250	CP-300	CP-200 / 250 / 300	
1 st	296	370	444	10	5.4
2 nd	264	330	396	11.3	11.5
3 rd	239	298	358	12.5	18.3
4 th	218	272	327	13.8	25.7
5 th	200	250	300	15	30

Note: Above performance ratings are based on 50Hz supply.

DIMENSION mm/in





▲ LACW305



- Lightweight and compact design for easy installation
- Electromagnetic spring-applied failsafe brake
- Heavy duty high efficiency ball bearings on all running surfaces
- Planetary gears for maximum mechanical efficiency
- Enclosed drum flanges to prevent rope becoming trapped between drum and support steel plates
- Steel plate foot mountings
- Quiet running
- Emergency stop function switch is available upon request
- Low voltage control ass'y is available upon request

SPECIFICATIONS

MODEL		LACW305
Lifting capacity kg wire rope top layer		500
Lifting speed, m/min	first layer	10
	top layer	15
Motor rating IP44	type	Induction
	output, kw x poles	1ph, 220-240V 1.8 x 4 3ph, 380-440V -
Gear ratio		48:1
Maximum lifting height, m		58
Braking methods		Electromagnetic
Wire rope w/hook	size, mm x m	* 7 x 60
	construction	6 x 19
	breaking strength, kg	2,700
	weight hook	CHW-0005
Drum dimension, mm	length	220
	drum dia.	102
	flange dia.	180
Mounting bolts pattern, mm x mm		267 x 156 ; 267 x 72
Standard accessory	weight hook	*
	remote control	*
Net weight, kg (standard version)		55
Gross weight, kg		62
Body dimension, mm (L x D x H)		728 x 260 x 299
Box dimension, mm (L x D x H)		750 x 300 x 380

Note: 1. Above performance ratings are based on 50Hz supply.
(60Hz motor available as option resulting in a reduction of lifting capacities by 20% and a speed increase of 20%)
2. *** Means standard version

SOLUTION for REMOTE CONTROL

- 1). *Remote control, HOB-213
 - Switch cord 3.5 mm² x 5C x 6 m
 - Pendant switch HOB-213
- 2). Remote control, PB-331
 - Switch cord 3.5 mm² x 5C x 6 m
 - Pendant switch PB-331 w/an emergency stop button
- 3). Low voltage control ass'y LV-320
 - Remote control, PB-306
 - . Switch cord 1.25 mm² x 3C x 3 m
 - . Pendant switch PB-306 w/an emergency stop button
 - Low voltage control, LV-320

PERFORMANCE DATA

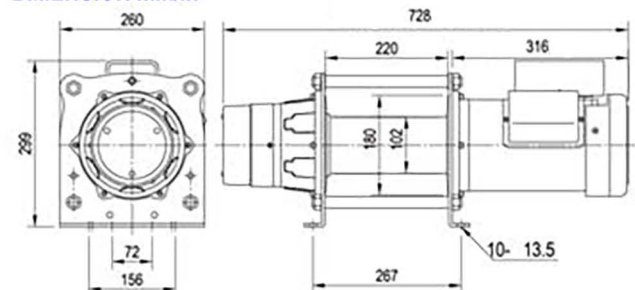
Pulling load capacity for various inclines in kg					
Level Surface	Gradient % inclines / angle in degrees				
	10%6°	20%11°	40%22°	60%31°	80%39°
4,170	2,230	1,620	1,040	810	690

1. All rating are based on the top layer. For each layer reduction on the drum pulling capacity is increased by 10%
2. Use a snatch block for double line operation, to increase line pull by approximately 85%
3. The pulling capacities are based on a pulling load and 15% has been allowed for friction (specific applications will vary)

Lifting Capacity, Lifting Speed and Rope Capacity			
Layer of Wire Rope	Lifting Capacity kg	Lifting Speed, m/min	Total Rope on the Drum, m
1 st	757	10	10
2 nd	671	11.6	22
3 rd	602	12.9	35
4 th	546	14.2	50
5 th	500	15	60

Note: Above performance ratings are based on 50Hz supply.

DIMENSION mm/in



- 4). Low voltage control ass'y LV-320
 - Remote control, CPB-161
 - . Switch cord 1.25 mm² x 3C x 3 m
 - . Pendant switch CPB-161
 - Low voltage control, LV-320



- Lightweight and compact design for easy installation
- Electromagnetic spring-applied failsafe brake
- Heavy duty high efficiency ball bearings on all running surfaces
- Planetary gears for maximum mechanical efficiency
- Enclosed drum flanges to prevent rope becoming trapped between drum and support castings
- Cast steel foot mountings
- Quiet running
- Rated capacity limiter limits driving power of the motor to prevent overloading of the winch
- Low voltage control ass'y comes as standard
- Emergency stop function switch is available upon request

SPECIFICATIONS

MODEL		LACW310
Lifting capacity kg wire rope top layer		750
Lifting speed, m/min	first layer	10
	top layer	15
Motor rating IP54	type	Induction
	output, kw x poles	3ph, 380-440V 2.2 x 4
Gear ratio		58:1
Maximum lifting height, m		58
Braking methods		Electromagnetic
Wire rope w/hook	size, mm x m	* 9 x 60
	construction	6 x 19
	breaking strength, kg	3,750
Drum dimension, mm	length	240
	drum dia.	114
	flange dia.	240
Mounting bolts pattern, mm x mm		300 x 400
Standard accessory	safety-latch hook	•
	remote control	•
	low voltage control	•
	base plate	•
Net weight, kg (standard version)		135
Gross weight, kg		165
Body dimension, mm (L x D x H)		870 x 424 x 360
Box dimension, mm (L x D x H)		970 x 530 x 520

Note:1. Above performance ratings are based on 50Hz supply.
(60Hz motor available as option resulting in a reduction of lifting capacities by 20% and a speed increase of 20%)
2. *** Means standard version

SOLUTION for REMOTE CONTROL

- 1). *Low voltage control ass'y LV-320
 - Remote control, CPB-161
 - . Switch cord 1.25 mm² x 3C x 3 m
 - . Pendant switch CPB-161
 - 2). Low voltage control ass'y LV-320
 - Remote control, PB-306
 - . Switch cord 1.25 mm² x 3C x 3 m
 - . Pendant switch PB-306 w/an emergency stop button
- Low voltage control, LV-320

PERFORMANCE DATA

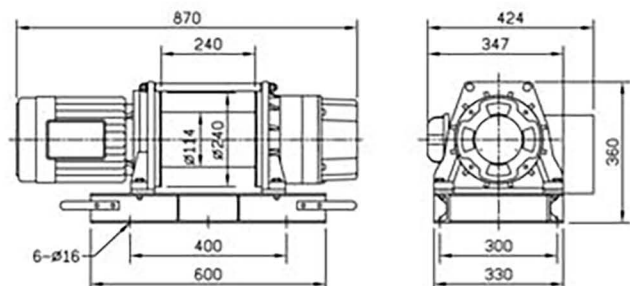
Pulling load capacity for various inclines in kg					
Level Surface	Gradient % inclines / angle in degrees				
	10%6°	20%11°	40%22°	60%31°	80%39°
6,250	3,350	2,430	1,550	1,210	1,040

1. All rating are based on the top layer. For each layer reduction on the drum pulling capacity is increased by 10%
2. Use a snatch block for double line operation, to increase line pull by approximately 85%
3. The pulling capacities are based on a pulling load and 15% has been allowed for friction (specific applications will vary)

Lifting Capacity, Lifting Speed and Rope Capacity			
Layer of Wire Rope	Lifting Capacity kg	Lifting Speed m/min	Total Rope on the Drum, m
1 st	1,188	10	9.9
2 nd	1,036	11	21.3
3 rd	920	12.4	34.2
4 th	826	13.8	48.5
5 th	750	15	60

Note: Above performance ratings are based on 50Hz supply.

DIMENSION mm/in





▲ CWG-10077
LACW320

LACW345
▼ CWG-30075

SPECIFICATIONS

MODEL		CWG-10077	CWG-30075	
Lifting capacity kg wire rope top layer		300		
Lifting speed, m/min	first layer	12	10	
	top layer	19	15	
Motor rating IP44	type	Induction		
	output, kw x poles	1ph, 110V	1.5 x 4	-
		1ph, 220-240V 3ph, 380-440V	-	0.75 x 4
Gear ratio		41:1	43:1	
Maximum lifting height, m		58	29	
Braking methods		Electromagnetic		
Wire rope w/hook	size, mm x m	* 6 x 60 7 x 40	* 6 x 30	
	construction	6 x 19		
	breaking strength, kg	2,010 2,700	2,010	
	weight hook	CHW-0031		
Drum dimension, mm	length	150	110	
	drum dia.	102	94	
	flange dia.	180	154	
Mounting bolts pattern, mm x mm		197 x 156	142 x 142	
Standard accessory	weight hook	•		
	remote control	•		
Net weight, kg (standard version)		42	32	
Gross weight, kg		44	34	
Body dimension, mm (L x D x H)		624 x 252 x 300	477 x 210 x 241	
Box dimension, mm (L x D x H)		700 x 280 x 375	635 x 296 x 290	

Note: 1. Above performance ratings are based on 50Hz supply.
(60Hz motor available as option resulting in a reduction of lifting capacities by 20% and a speed increase of 20%)
2. *** Means standard version

SOLUTION for REMOTE CONTROL

- *Remote control, HOB-213
 - Switch cord 3.5 mm² x 5C x 3 m for CWG-10077
 - Switch cord 1.25 mm² x 5C x 3 m for CWG-30075
 - Pendant switch HOB-213
- Remote control, PB-331
 - Switch cord 3.5 mm² x 5C x 3 m for CWG-10077
 - Switch cord 1.25 mm² x 5C x 3 m for CWG-30075
 - Pendant switch PB-331 w/an emergency stop button
- Low voltage control ass'y LV-320
 - Remote control, PB-306
 - . Switch cord 1.25 mm² x 3C x 3 m
 - . Pendant switch PB-306 w/an emergency stop button
 - Low voltage control, LV-320

- Positive retention of wire rope on the drum
- Electromagnetic spring-applied failsafe brake
- Heavy duty high efficiency ball bearings on all running surfaces
- Planetary gears for maximum mechanical efficiency
- Enclosed drum flanges to prevent rope becoming trapped between drum and support steel plates
- Quiet running
- Emergency stop function switch is available upon request
- Low voltage control ass'y is available upon request

PERFORMANCE DATA

Pulling load capacity for various inclines in kg

MODEL	Level Surface	Gradient % inclines / angle in degrees				
		10%6°	20%11°	40%22°	60%31°	80%39°
CWG-10077 CWG-30075	2,500	1,340	970	620	490	410

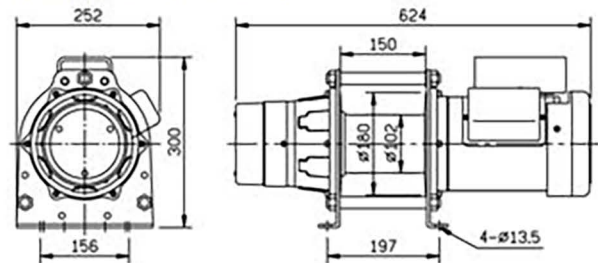
1. All rating are based on the top layer. For each layer reduction on the drum pulling capacity is increased by 10%
2. Use a snatch block for double line operation, to increase line pull by approximately 85%
3. The pulling capacities are based on a pulling load and 15% has been allowed for friction (specific applications will vary)

Lifting Capacity, Lifting Speed and Rope Capacity

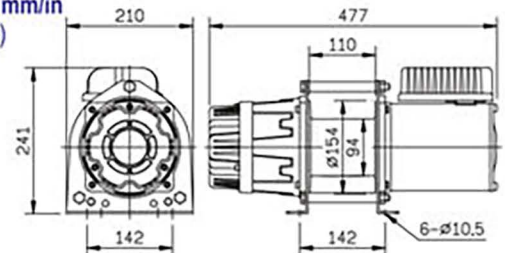
Layer of Wire Rope	Lifting Capacity kg		Lifting Speed m/min		Total Rope on the Drum, m	
	CWG-10077	CWG-30075	CWG-10077	CWG-30075	CWG-10077	CWG-30075
1 st	467	444	12	10	8.1	5.4
2 nd	420	396	13.5	11.4	17.2	11.5
3 rd	382	358	14.9	12.5	27.1	18.3
4 th	350	326	16.2	13.8	38	25.7
5 th	323	300	17.6	15	50	30
6 th	300	-	19	-	60	-

Note: Above performance ratings are based on 50Hz supply.

DIMENSION mm/in (CWG-10077)



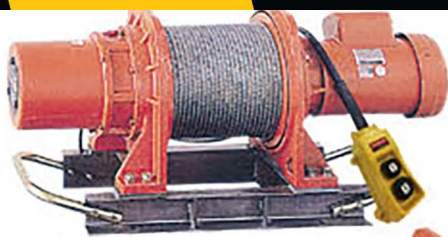
DIMENSION mm/in (CWG-30075)



Australia Wide Sales & Service

sales@materialshandling.com.au | www.materialshandling.com.au | 1300 65 00 35

MATERIALS
Handling PTY LTD *Working with ease.*



▲ CWG-10151
LACW330



CWG-30151 ▶
LACW350

- Electromagnetic spring-applied failsafe brake
- Heavy duty high efficiency ball bearings on all running surfaces
- Planetary gears for maximum mechanical efficiency
- Enclosed drum flanges to prevent rope becoming trapped between drum and support castings
- Cast steel foot mountings
- Fabricated steel drum
- Supplied on steel base plate ready to mount
- Quiet running
- Emergency stop function switch is available upon request
- Low voltage control ass'y is available upon request

SPECIFICATIONS

MODEL		LACW330	LACW350
Lifting capacity kg wire rope top layer		400	500
Lifting speed, m/min	first layer	12	
	top layer	18	
Motor rating IP44	type	Induction	
	output, kw x poles	1ph, 220-240V 3ph, 380-440V	1.5 x 4
Gear ratio		57:1	
Maximum lifting height, m		58	
Braking methods		Electromagnetic	
Wire rope w/hook	size, mm x m	* 9 x 60 8 x 100	
	construction	6 x 24	
	breaking strength, kg	3,750 2,970	
	weight hook	CHW-0005	
Drum dimension, mm	length	240	
	drum dia.	140	
	flange dia.	280	
Mounting bolts pattern, mm x mm		400 x 325	
Standard accessory	weight hook	•	
	remote control	•	
	base plate	•	
Net weight, kg (standard version)		125	
Gross weight, kg		150	
Body dimension, mm (L x D x H)		937 x 367 x 425	922 x 367 x 425
Box dimension, mm (L x D x H)		1,090 x 470 x 590	

Note: 1. Above performance ratings are based on 50Hz supply.
(60Hz motor available as option resulting in a reduction of lifting capacities by 20% and a speed increase of 20%)
2. *** Means standard version

SOLUTION for REMOTE CONTROL

- 1). *Remote control, HOB-213
 - Switch cord 3.5 mm² x 5C x 3 m for CWG-10151
 - Switch cord 2.0 mm² x 5C x 3 m for CWG-30151
 - Pendant switch HOB-213
- 2). Remote control, PB-331
 - Switch cord 3.5 mm² x 5C x 3 m for CWG-10151
 - Switch cord 2.0 mm² x 5C x 3 m for CWG-30151
 - Pendant switch PB-331 w/an emergency stop button
- 3). Low voltage control ass'y LV-320
 - Remote control, PB-306
 - Switch cord 1.25 mm² x 3C x 3 m
 - Pendant switch PB-306 w/an emergency stop button
 - Low voltage control, LV-320

PERFORMANCE DATA

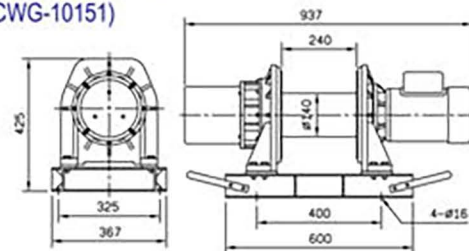
Pulling load capacity for various inclines in kg					
MODEL	Level Surface	Gradient % inclines / angle in degrees			
		10%6°	20%11°	40%22°	60%31° 80%39°
CWG-10151	3,330	1,790	1,300	830	650 550
CWG-30151	4,170	2,230	1,620	1,040	810 690

1. All rating are based on the top layer. For each layer reduction on the drum pulling capacity is increased by 10%
2. Use a snatch block for double line operation, to increase line pull by approximately 85%
3. The pulling capacities are based on a pulling load and 15% has been allowed for friction (specific applications will vary)

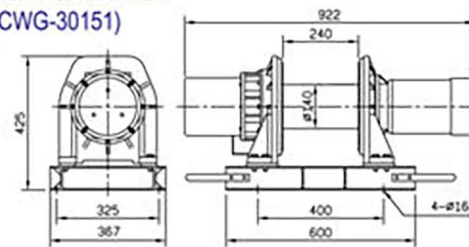
Lifting Capacity, Lifting Speed and Rope Capacity				
Layer of Wire Rope	Lifting Capacity kg		Lifting Speed m/min	Total Rope on the Drum, m
MODEL	CWG-10151	CWG-30151	CWG-10151 / 30151	
1 st	593	742	12	12
2 nd	529	662	13.3	26
3 rd	478	597	14.8	40
4 th	436	544	16.2	57
5 th	400	500	18	60

Note: Above performance ratings are based on 50Hz supply.

DIMENSION mm/in (CWG-10151)



DIMENSION mm/in (CWG-30151)





▲ CWG-34000
LACW850



▲ CWG-30750
LACW750



▲ CWG-31500
LACW800

- Electromagnetic spring-applied failsafe brake
- Heavy duty high efficiency ball bearings on all running surfaces
- Planetary gears for maximum mechanical efficiency
- Cast steel foot mountings
- Fabricated steel drum
- Supplied on steel base plate ready to mount
- Rated capacity limiter limits driving power of the motor to prevent overloading of the winch
- Quiet running
- Low voltage control ass'y comes as standard
- Emergency stop function switch is available upon request

SPECIFICATIONS

MODEL		LACW375		LACW565		LACW750		LACW800		LACW850	
		CWG-30375		CWG-30565		CWG-30750		CWG-31500		CWG-34000	
Option		A	B	A	B	A	B	A	B	A	B
Lifting capacity kg wire rope top layer		900		1,100		2,200		3,500		5,000	
Lifting speed, m/min	first layer	13	8.5	14	9.2	6.9	4.5	5.8	4.4	8	5.3
	top layer	20.6	13.5	25	16.4	12.6	8.3	8	6	12.2	8
Motor rating IP54	type	Induction									
	output, kw x poles	3.8 x 4	2.2 x 6	5.5 x 4	3.8 x 6	5.5 x 4	3.8 x 6	5.5 x 6	3.8 x 8	11 x 4	7.5 x 6
Gear ratio		48:1		50:1		127:1		192:1		197:1	
Maximum lifting height, m		58		97		97		144		192	
Braking methods		Electromagnetic									
Wire rope w/hook	size, mm x m	* 10 x 60		* 12 x 100		* 16 x 100		* 18 x 150		* 22.4 x 200	
	construction	6 x 24									
	breaking strength, kg	4,640		6,680		11,900		15,000		23,300	
Drum dimension, mm	length	230		312		312		405		680	
	drum dia.	127		140		178		356		324	
	flange dia.	275		320		410		570		570	
Mounting bolts pattern, mm x mm		500 x 370		620 x 425		600 x 499		847 x 680		920 x 680	
Standard accessory	safety-latch hook	•									
	remote control	•									
	low voltage control	•									
	base plate	•									
Net weight, kg (standard version)		185		293		400		930		1,380	
Gross weight, kg		220		340		450		1,000		1,465	
Body dimension, mm (L x D x H)		974 x 400 x 445		1,120 x 470 x 520		1,246 x 565 x 658		1,439 x 740 x 860		1,860 x 740 x 905	
Box dimension, mm (L x D x H)		1,140 x 590 x 620		1,290 x 650 x 750		1,390 x 710 x 900		1,590 x 840 x 1,090		2,040 x 840 x 1,170	

Note: 1. Above performance ratings are based on 50Hz supply.

(60Hz motor available as option resulting in a reduction of lifting capacities by 20% and a speed increase of 20%)

2. *** Means standard version

Australia Wide Sales & Service

sales@materialshandling.com.au | www.materialshandling.com.au | 1300 65 00 35

MATERIALS
Handling PTY LTD *Working with ease*

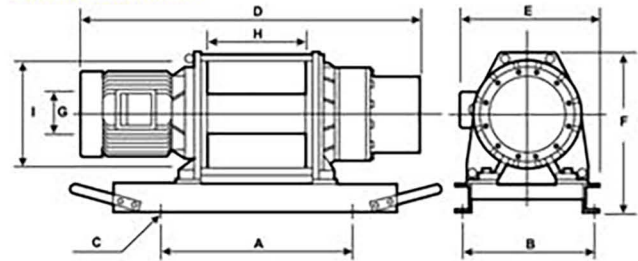


▲CWG-30565
LACW565



▲CWG-30375
LACW375

DIMENSION mm/in



MODEL	Mounting bolts pattern								
	A	B	C	D	E	F	G	H	I
LACW375	500	370	4 - Ø 19	974	400	445	127	230	275
LACW565	620	425	4 - Ø 19	1,120	470	520	140	312	320
LACW750	600	499	4 - Ø 22	1,246	565	658	178	312	410
LACW800	847	680	8 - Ø 28	1,439	740	860	356	405	570
LACW850	920	680	8 - Ø 32	1,860	740	905	324	680	570

PERFORMANCE DATA

Pulling load capacity for various inclines in kg						
MODEL	Level Surface	Gradient % inclines / angle in degrees				
		10%6°	20%11°	40%22°	60%31°	80%39°
LACW375	7,500	4,020	2,920	1,860	1,460	1,250
LACW565	9,170	4,910	3,560	2,280	1,780	1,520
LACW750	18,330	9,830	7,130	4,560	3,560	3,050
LACW800	29,170	15,630	11,340	7,250	5,660	4,840
LACW850	41,670	22,330	16,200	10,360	8,090	6,920

- All rating are based on the top layer. For each layer reduction on the drum pulling capacity is increased by 10%
- Use a snatch block for double line operation, to increase line pull by approximately 85%
- The pulling capacities are based on a pulling load and 15% has been allowed for friction (specific applications will vary)

Lifting Capacity, Lifting Speed and Rope Capacity				
MODEL	LACW375 CWG-30375			
Layer of Wire Rope	Lifting Capacity kg	Lifting Speed, m/min		Total Rope on the Drum, m
		A	B	
1 st	1,426	13	8.5	10
2 nd	1,244	14.9	9.8	20
3 rd	1,103	16.8	11	33
4 th	991	18.7	12.2	46
5 th	900	20.6	13.5	60

MODEL	LACW565 CWG-30565			
Layer of Wire Rope	Lifting Capacity kg	Lifting Speed, m/min		Total Rope on the Drum, m
		A	B	
1 st	1,968	14	9.2	12
2 nd	1,700	16.2	10.6	26
3 rd	1,496	18.4	12.1	42
4 th	1,336	20.6	13.5	59
5 th	1,207	22.8	15	79
6 th	1,100	25	16.4	100

MODEL	LACW750 CWG-30750			
Layer of Wire Rope	Lifting Capacity kg	Lifting Speed, m/min		Total Rope on the Drum, m
		A	B	
1 st	4,014	6.9	4.5	11
2 nd	3,446	8.1	5.3	24
3 rd	3,019	9.2	6	39
4 th	2,686	10.4	6.8	56
5 th	2,419	11.5	7.5	75
6 th	2,200	12.6	8.3	100

MODEL	LACW800 CWG-31500			
Layer of Wire Rope	Lifting Capacity kg	Lifting Speed, m/min		Total Rope on the Drum, m
		A	B	
1 st	4,848	5.8	4.4	25
2 nd	4,422	6.4	4.8	53
3 rd	4,065	6.9	5.2	83
4 th	3,761	7.5	5.6	116
5 th	3,500	8	6	150

MODEL	LACW850 CWG-34000			
Layer of Wire Rope	Lifting Capacity kg	Lifting Speed, m/min		Total Rope on the Drum, m
		A	B	
1 st	7,587	8	5.3	32
2 nd	6,718	9.1	5.9	68
3 rd	6,028	10.1	6.6	108
4 th	5,466	11.1	7.3	153
5 th	5,000	12.2	8	200

Note: Above performance ratings are based on 50Hz supply.

SOLUTION for REMOTE CONTROL

- Low voltage control ass'y LV-320
 - Remote control, CPB-161
 - Switch cord 1.25 mm² x 3C x 3 m
 - Pendant switch CPB-161
 - Low voltage control, LV-320 for CWG-30375, CWG-30565, CWG-30750, CWG-31500 at 380-440V power ratings
- Low voltage control ass'y LV-360
 - Remote control, CPB-161
 - Switch cord 1.25 mm² x 3C x 3 m
 - Pendant switch CPB-161
 - Low voltage control, LV-360 for CWG-34000 at 380-440V power ratings
- Low voltage control ass'y LV-320
 - Remote control, PB-306
 - Switch cord 1.25 mm² x 3C x 3 m
 - Pendant switch PB-306 w/an emergency stop button
 - Low voltage control, LV-320 for CWG-30375, CWG-30565, CWG-30750, CWG-31500 at 380-440V power ratings
- Low voltage control ass'y LV-360
 - Remote control, PB-306
 - Switch cord 1.25 mm² x 3C x 3 m
 - Pendant switch PB-306 w/an emergency stop button
 - Low voltage control, LV-360 for CWG-34000 at 380-440V power ratings