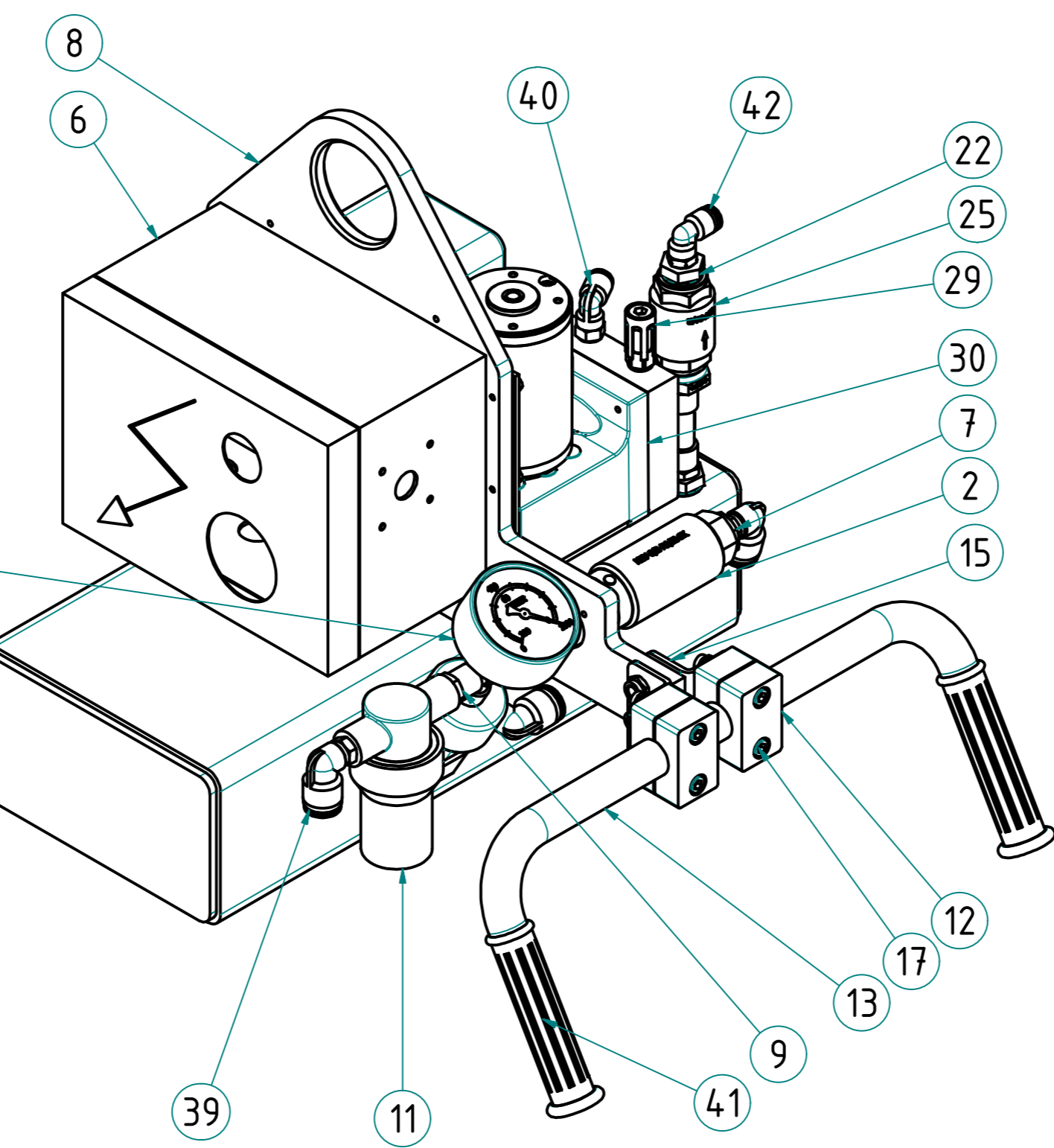
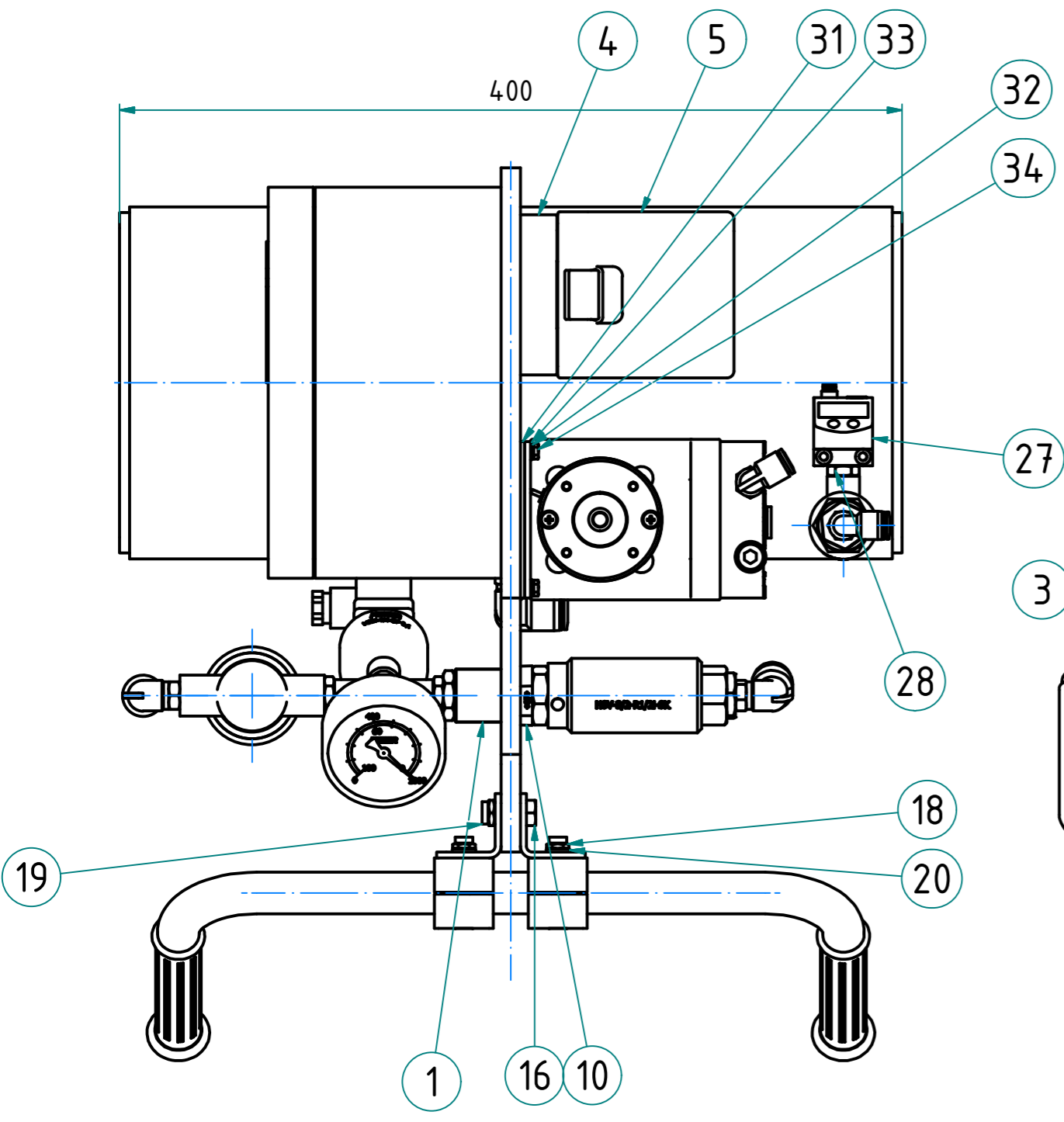
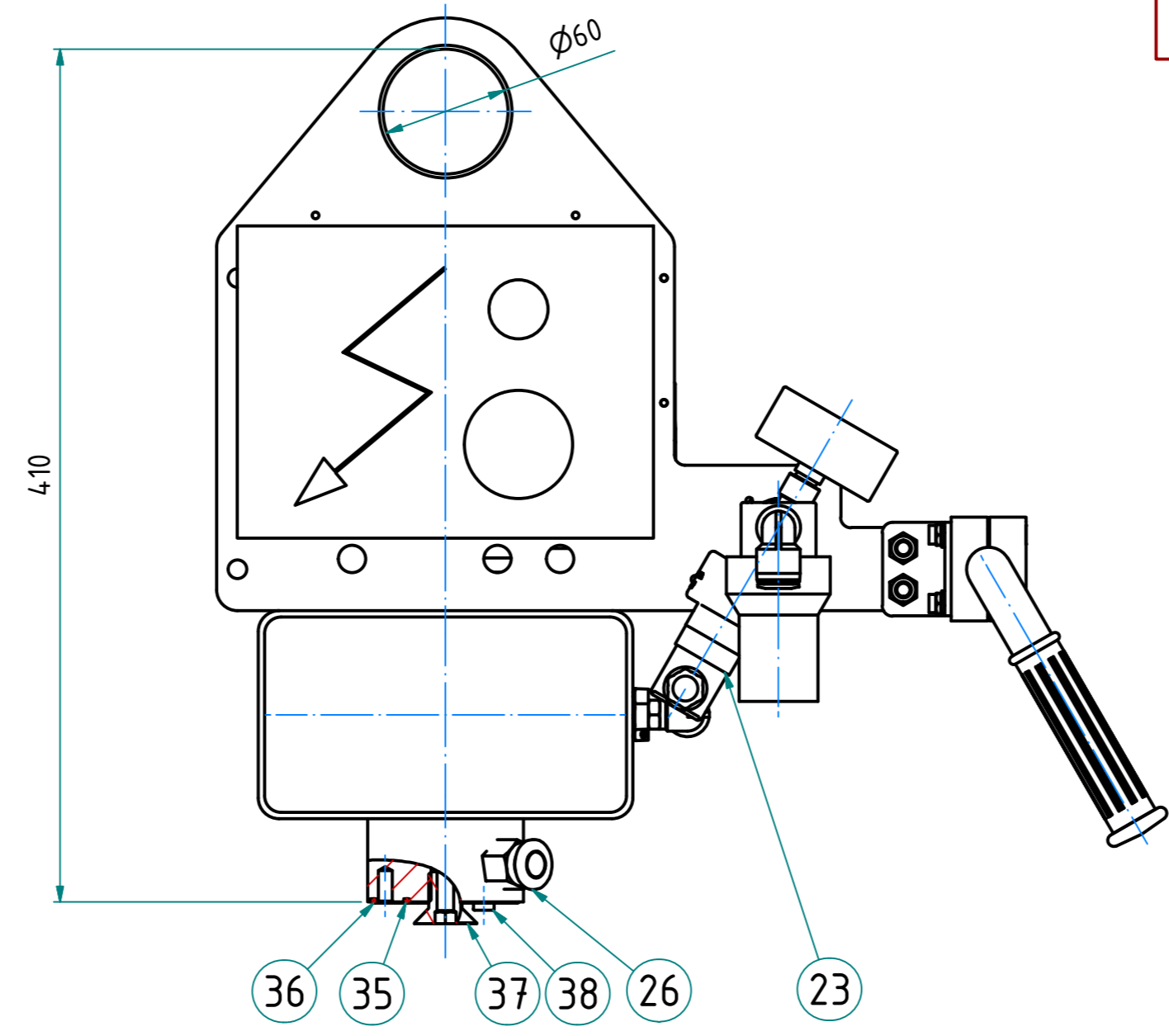
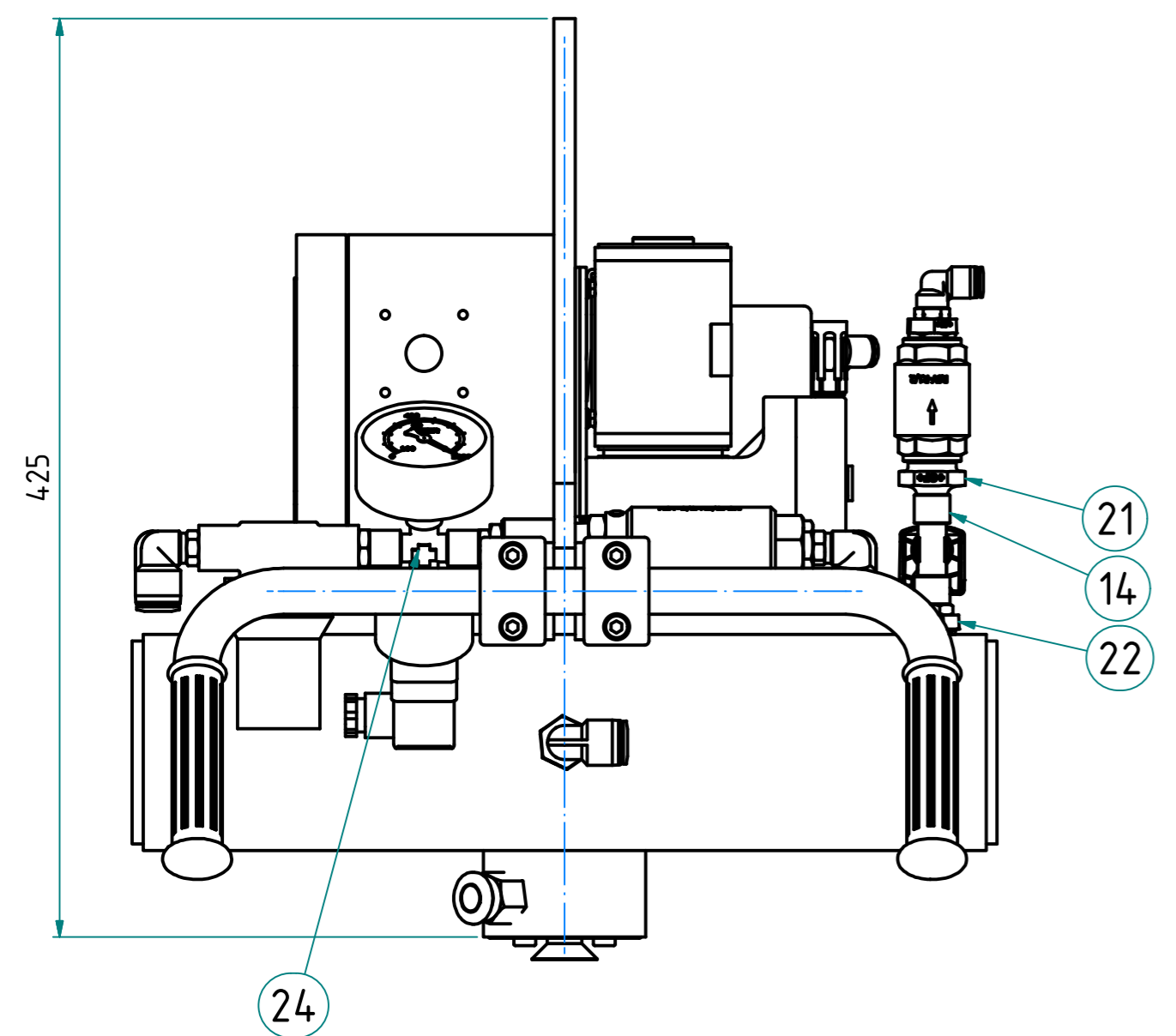


ab 10.10.2012-VSD 1.52.1.0028 with 1.52.3.0034 exchanged

Own weight: 25 kg



Pos.	Stück	Artikel-Nr.	Benennung1	Benennung2	MATERIAL	DIN	ROHMASS	kg
1	1	6.215.0536	GF16-Whole Socket	R1/2X34	EN-GJMW-400-5	DIN 2986		0.1
2	1	1.511.0024	Manual slide valve with lock	HSV-3/2-1/2-SK				0.7
3	1	1.525.0008	Vacuum gauge	VM-63-R1/4H-RG60				0.1
4	1	6.35.3.0996	Charging adapter	8-0500-0410				0.2
5	1	6.35.3.0997	Tool battery 24V-3,3AH-NI-MH	01.20.043.30-01/PS209				1.2
6	1	6.35.5.0046	Terminal box drilled	200X150X120MM				20
7	2	6.215.0415	Screw connection reducing sleeve	GVS-RM-1/2A-1/4I	CuZn39Pb3			0
8	1	5.211.0634	Suspended frame, black	EHR-VBM-SER				15.1
9	3	6.215.0451	Screw connection double nipple AA	VS-G-NPFB-D-G1/4-G1/4	S235JR+AR			0
10	1	6.215.0230	GF280-Double nipple galvanized	R1/2-R1/2		DIN 2986		0.1
11	1	1.53.2.0018	Cup filter long	VFK-1/4-SER				0.1
12	2	6.211.0795	Stauff clamp halves	GR3-D21,3-G1/2	PP	DIN 3015-1		0
13	1	5.211.0636	Handle		S235JR+AR			0.3
14	1	6.215.0416	T-shaped threaded screw connection	GVS-T-1/4I	CuZn39Pb3			0.1
15	2	5.211.0715	Steel Angle		S235JR+AR			0.1
16	2	6.211.0436	Hex bolt	M8X22	8.8	ISO 4017		0
17	4	6.211.0182	Cylinder head screw galvanized	M6X40	8.8	DIN 912		0
18	4	6.211.0469	Hexagon nut self-locking	M6	8.8 verzinkt	ISO 10511		0
19	2	6.211.0498	Hexagon nut self-locking	M8	8.8 verzinkt	ISO 10511		0
20	8	6.211.0011	Flat washer	6.4		DIN 125		0
21	1	6.215.0208	GF245-Double nipple galvanized	R1/2-R1/4		DIN 2986		0.1
22	3	6.215.0187	GF241-Reducing nipple galvanized	R1/2-R1/4		DIN 2986		0
23	1	1.52.1.0009	Vacuum switch	VSM-1/4-SP-0,1				0.1
24	1	6.215.0411	Screw connection X-Form	GVS-X-1/4I				0.1
25	1	1.514.0003	Check valve	RSV-1/2-I	CW 614N			0.3
26	1	6.215.0670	Push-in fitting	SVS-QS-R1/4-12				0
27	1	1.52.3.0034	Digital vacuum switch	VSD-1/8-I-4PNP-M8-PQ78092				0
28	1	6.215.0841	Screw connection reducing nipple	GVS-RN-1/8-1/4	CuZn39Pb3 vernickelt			0
29	1	6.213.0204	Pneumatic silencer	U-1/8-B	Aluminium-PE			0
30	1	1.412.0043	Vacuum pump (GS)	VP-TF4.2-24VDC-0,05KW				0.4
31	1	5.24.6.0645	Rubber pad pump	VP-TF4.2-SER				0
32	4		Toothed washer					0
33	4	6.211.0009	Flat washer	4.3		DIN 125		0
34	4		Hex bolt					0
35	1	6.212.0353	O-ring	OR-35X2-S15	NBR		35x2	0
36	1	6.212.0466	O-ring	OR-67X2-S15	NBR-S			0
37	1	1.312.0007	Connection screw hole	ASB-M16-25-SER	S355J2+N			0
38	2	6.211.0816	Cylindrical screw low head	M6X10	8.8	DIN 7984		0
39	3	6.215.0675	Push-in fitting, angled	SVS-W-1/4-12				0
40	1	6.215.0406		SVS-W-1/8-8				0
41	2	6.219.0007	Rubber grip	1/2-GLATT				0
42	1	6.215.1019	Push-in fitting, angled	SVS-W-1/4-8	PBT			0

Nicht tolerierte Maße nach DIN 7168-m		Rohmaß	Maßstab	(Gewicht) 39.672 kg
			Halbzeug:	
			Werkstoff:	
		Datum	Name	VacuBoyMini Grundgerät VBM-SER TF4.2-24VDC-60%-HSV-ACCU3,3
		Bearb. 02.12.2010	Tampu	
		Gepr. 19.08.2015	Schipke	
		Norm.		
		FEZER Simply move more.		Index Blatt 1 A2
Zust.	Änderungen	Datum	Name	Ursprung
		Alte Zeichnungs-Nr.:		