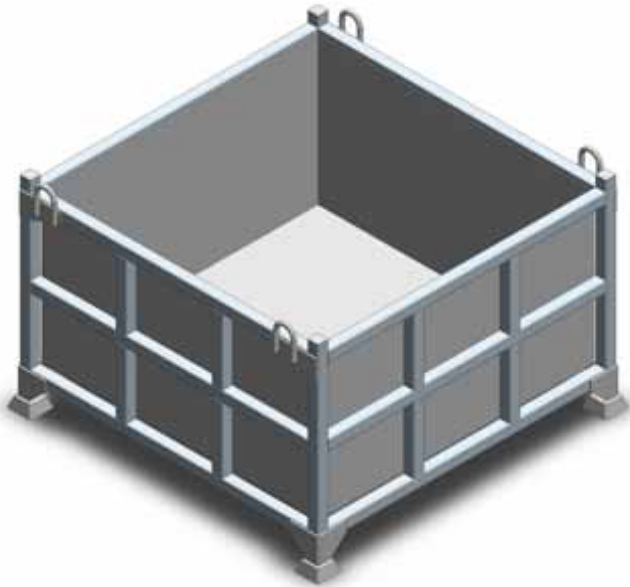


SITE STORAGE BOXES (WITH LID) SMB1150L SPECIFICATIONS



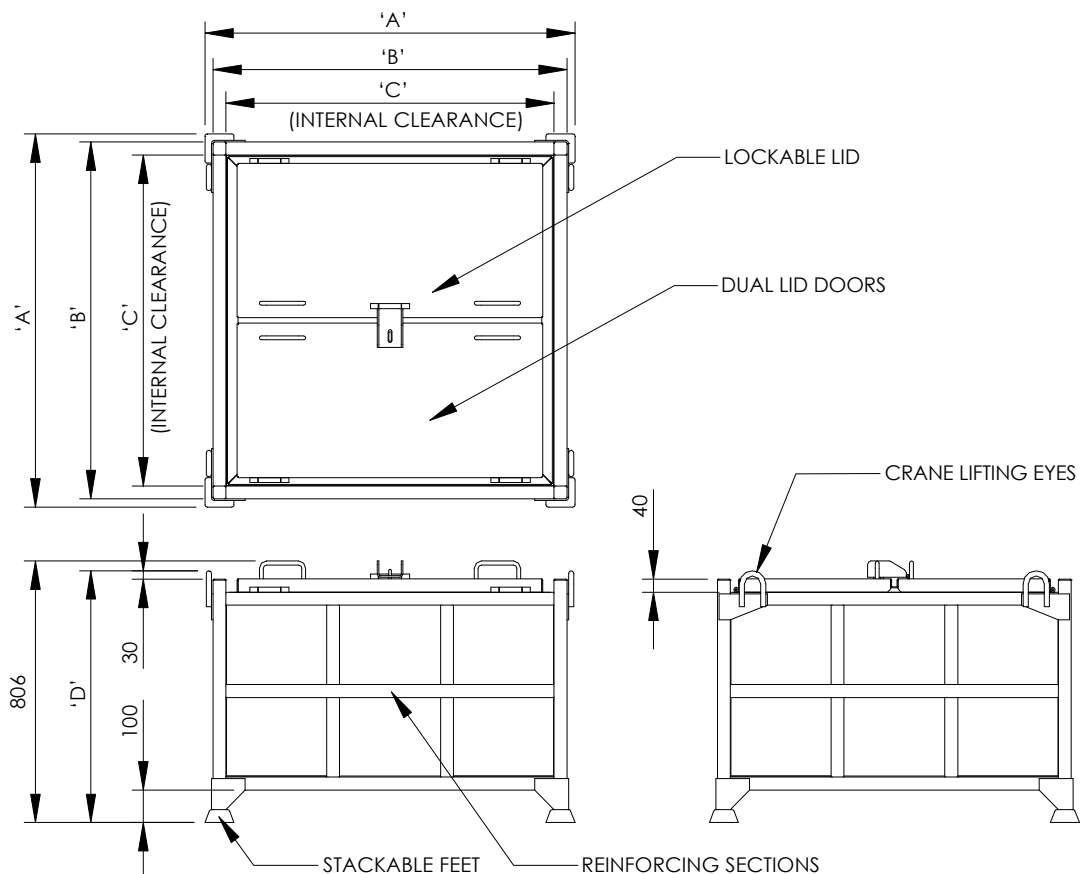
The type SMB Heavy Duty Storage Boxes are designed for secure handling of heavy weight components/parts, in and around your workshop and during transport.

When equipped with the lockable lid, this Storage Box is a perfect place for all your on-site tools and smaller equipment.

The SMB Storage Boxes can be transported by Forklift or Crane and is stackable up to 4 high when fully loaded.

SPECIFICATIONS:

- Safe Working Load (SWL): 1500kg
- Zinc Plated Finish
- Refer below for all other specifications



TYPE	Dimensions (mm)				Volume (litres)	Unit Weight (kg)	Lid Supplied
	'A'	'B'	'C'	'D'			
SMB-1150-L	1150	1100	1020	780	580	215	YES