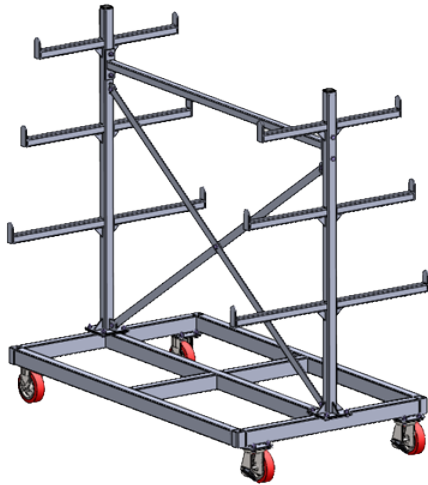


# PIPE TROLLEY BAPT1820 SPECIFICATIONS

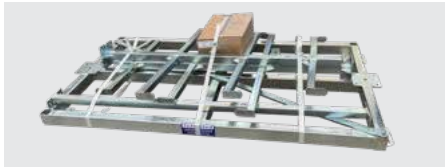


The BAPT1820 Pipe Trolley is designed to safely store and transport long length materials such as pipe and conduit on site. These mobile storage solutions increase worker productivity by keeping materials organised and close to work areas.

Supplied standard as flatpack for on-site assembly.

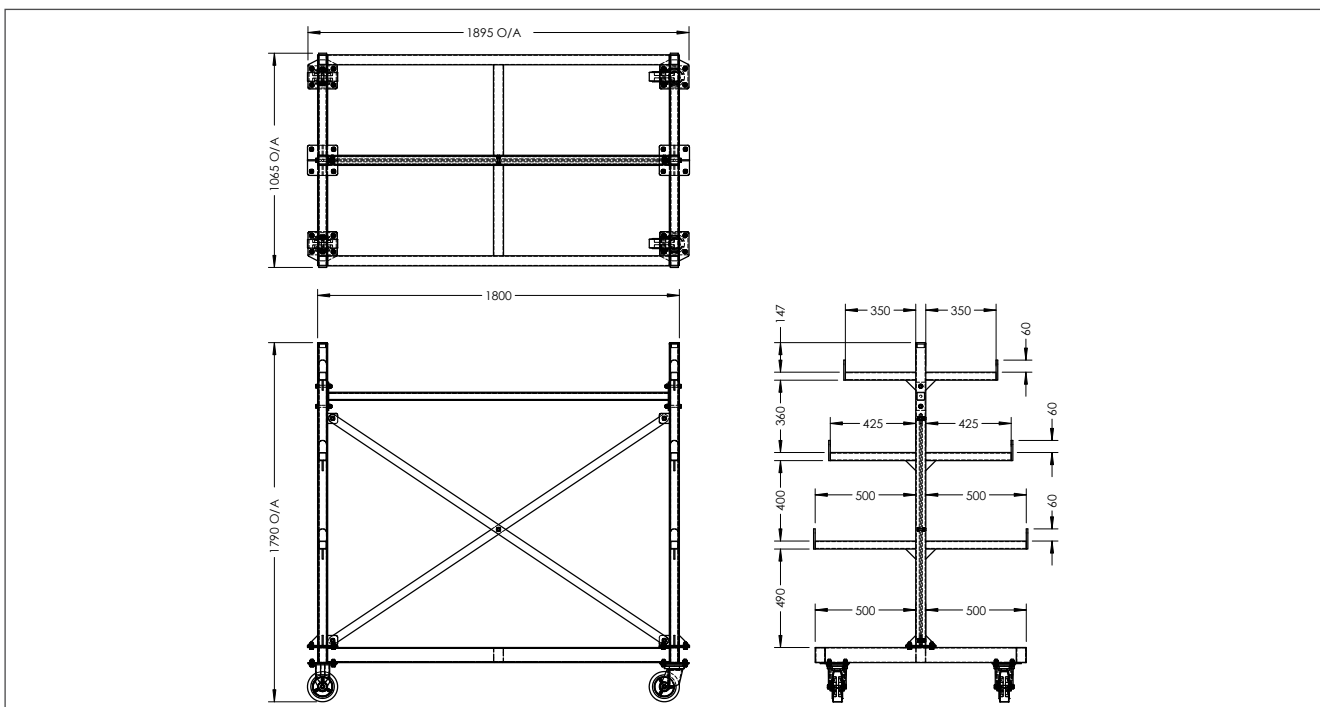
## FEATURES:

- Suitable to store and transport long materials such as pipe, conduit, tubing & bar stock
- 2 tonne capacity
- Heavy duty construction for maximum stability
- 8 spaces available for sorting and accessing pipes
- Arm stops prevent items falling off
- 4 corner posts supplied for fitting to base frame
- Industrial 150 mm poly/cast wheels with brakes allow easy moving around the work site
- Zinc finish



## SPECIFICATIONS:

Working Load Limit (WLL)	2000 kg
Dimensions	1895(l) x 1065(w) x 1790(h) mm
Unit Weight	100 kg



Australia Wide Sales & Service

sales@materialshandling.com.au | www.materialshandling.com.au | 1300 25 84 07

**MATERIALS**  
**Handling** PTY LTD *Working with ease.*