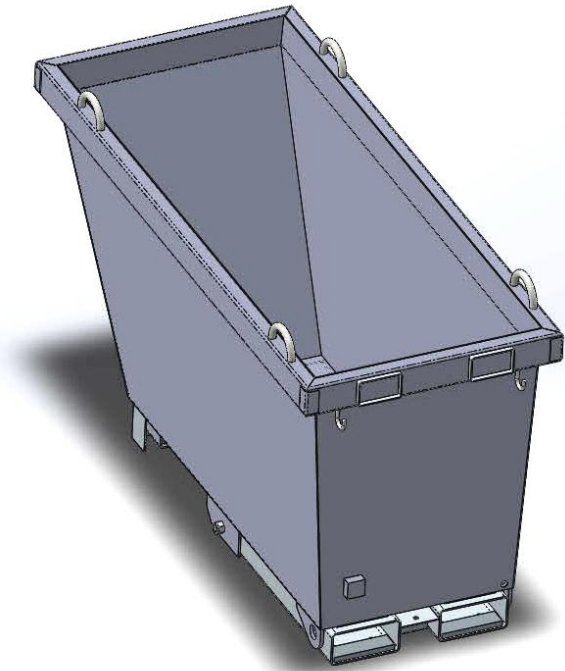


# SELF DUMPING BINS MWFH SPECIFICATIONS



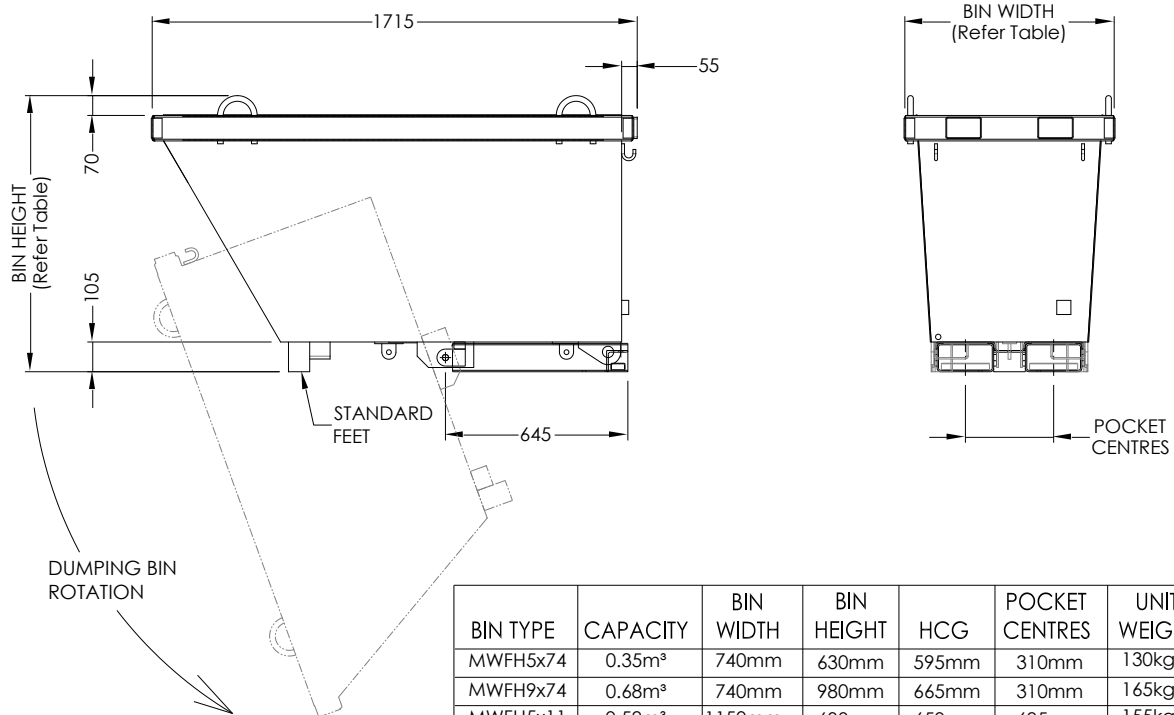
(Type MWFH74 standard model shown)

The type MWFH Self Dumping Bin has been designed to provide an economical solution to collecting and disposing of industrial waste. Collection can be carried out at the point of manufacture. When transporting the Bin to the discharge point, the Forklift tines are positioned fully under the Bin utilising the Forklifts maximum lift capacity. To tip the Bin, the Operator catches the Bin on the edge of the bulk container and reverses the Forklift. When the tines clear the pivot point, raising the Bin will permit a complete discharge of contents.

All type MWFH bins have reinforced edging and comes with 4 Crane Lugs plus upending lugs. A Working Load Limit of 1500 kg and range in sizes from 0.35 – 2.1 cubic metre capacities. The standard finish on the Bin is H.D. Galvanised.

## SPECIFICATIONS:

- Working Load Limit: 1500 kg
- Unit Weight – refer Table
- Volume Capacity – refer Table
- Horizontal C of G – refer Table
- Pocket size 185 x 70 mm
- Pocket Centres – refer Table
- Wheels Optional
- Fitted with removable drain plug



BIN TYPE	CAPACITY	BIN WIDTH	BIN HEIGHT	HCG	POCKET CENTRES	UNIT WEIGHT
MWFH5x74	0.35m³	740mm	630mm	595mm	310mm	130kg
MWFH9x74	0.68m³	740mm	980mm	665mm	310mm	165kg
MWFH5x11	0.59m³	1150mm	630mm	650mm	695mm	155kg
MWFH9x11	1.1m³	1150mm	980mm	580mm	695mm	200kg
MWFH9x20	2.1m³	1986mm	980mm	565mm	695mm	260kg