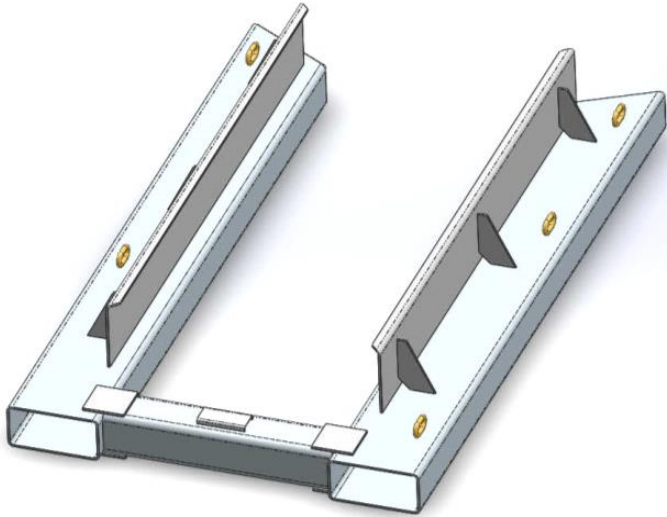


FORKLIFT MOUNTED WHEELIE BIN TIPPER MFWB24 SPECIFICATIONS



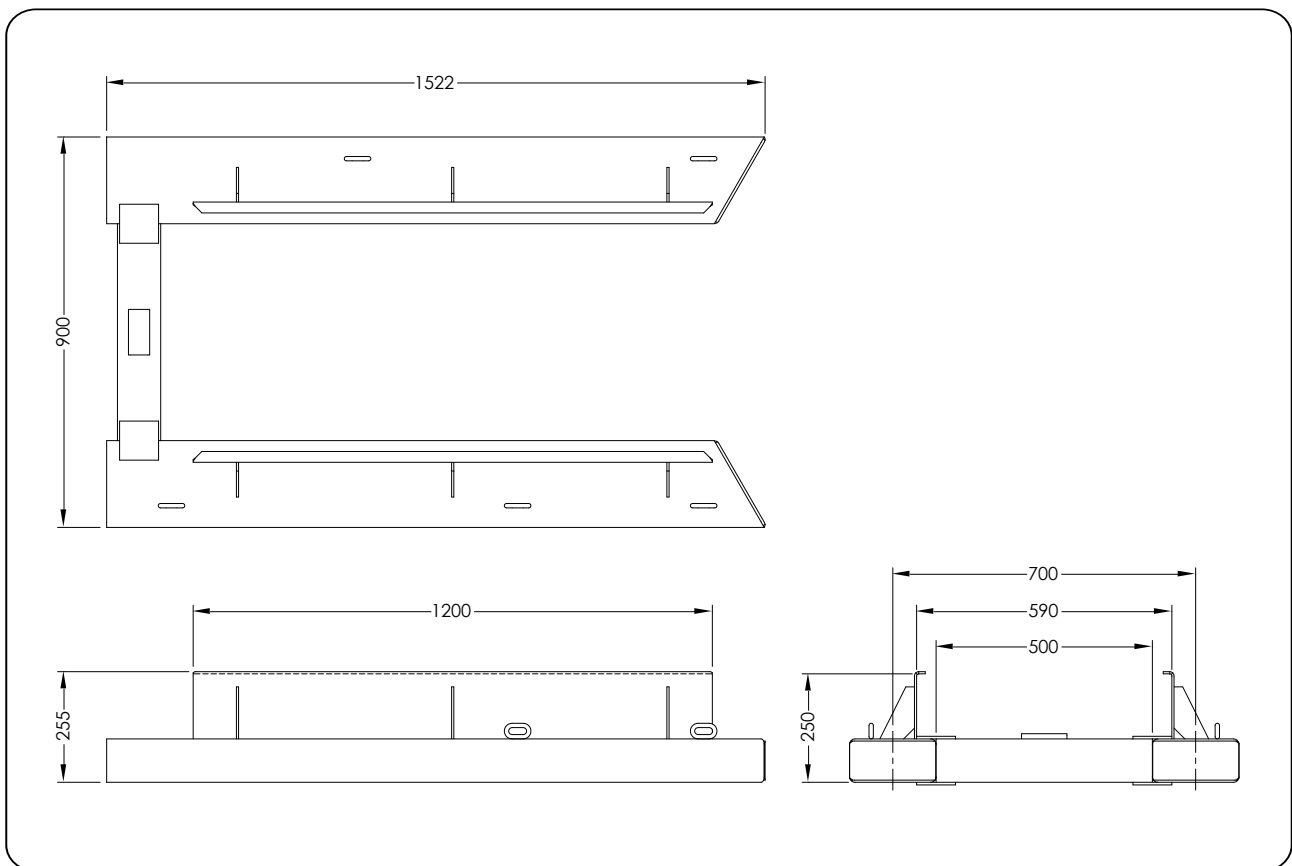
The type MFWB24 Wheelie Bin Lifter/Tipper has been designed to safely lift and empty one or two standard 240 litre plastic bins. Emptying is carried out using a forklift with a sideward rotator attached.

The bin is secured inside the support rails with a bin securint chain preventing unintentional disengagement of a wheelie bin/s from the attachment during transport or rotation.

The standard finish on the MFWB24 Wheelie Bin Lifter/Tipper is enamel painted over primed steel, Colour: Mandarin X14.

SPECIFICATIONS:

- Working Load Limit(WLL): 500kg
- Load Centre: 600mm
- Unit Weight: 100kg
- Pocket Size: 185 x 85
- Pocket Centres: 700mm
- Horizontal C of G: 690mm
- Vertical C of G: -20mm



Australia Wide Sales & Service

sales@materialshandling.com.au | www.materialshandling.com.au | 1300 25 84 07

MATERIALS
Handling PTY LTD *Working with ease.*