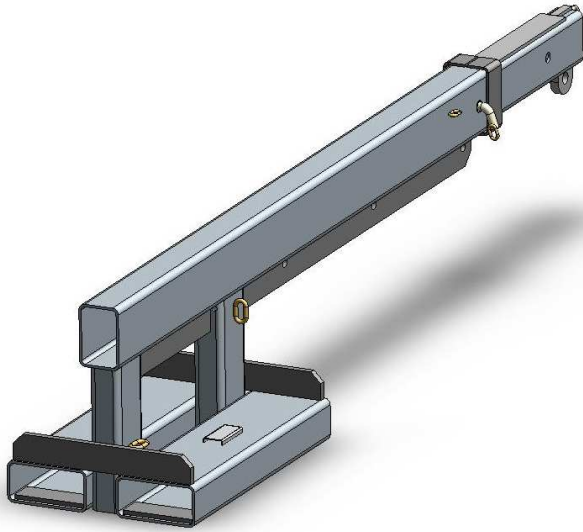


# FIXED JIB (LONG) MFJL50 SPECIFICATIONS



The type MFJL50 Fixed Jib (Long) is designed as an affordable general purpose Jib with a 3.5 metre reach when fully extended. This slip-on Forklift attachment is held to the Forklift by a safety chain. The Jibs overall length when closed is 2.1 metres.

The standard finish on the type MFJL50 Fixed Jib (Long) is Zinc Plated.

## SPECIFICATIONS:

- Safe Working Load (SWL) 4750 kg Max.
- Unit Weight 170 kg
- Load Centre 935 mm
- Pocket Size 185 x 75
- Pocket Centres 275 mm
- Horizontal C of G 1210 mm
- Vertical C of G 200 mm

