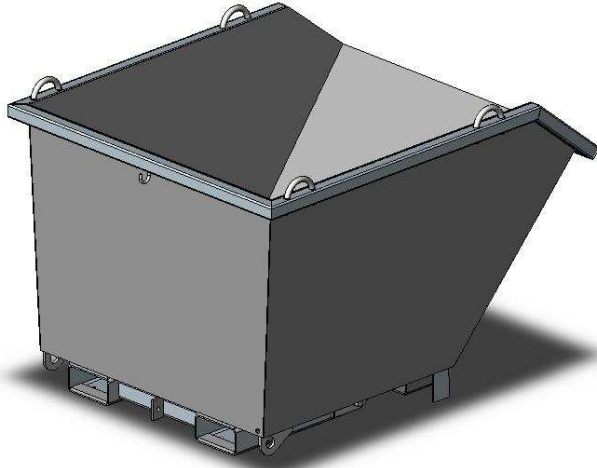


FORKLIFT TIPPING BINS MCSD SPECIFICATIONS



(Type MCSD12 standard model shown)

The economical MCSD Forklif Tipping Bins are a self dumping bin suitable for most waste handling applications. Being a nesting bin, it uses minimal space for storage and transport.

This bin is supplied standard with 4 crane lugs and upending lugs. It is also fitted with a drain plug and wheel brackets (wheels not supplied unless ordered). The type MCSD Forklift Tipping Bins have a hot-dipped galvanised finish.

SPECIFICATIONS:

- Safe Working Load 1500 kg
- Unit Weight – refer Table
- Volume Capacity – refer Table
- Pocket size 185 x 75 mm
- MCSD9 Pocket Centres – 340 mm
- MCSD12 & 18 Pocket Centres – 630 mm
- HCG 550 mm
- VCG 340 mm
- Wheels Optional
- Drain Valve & Strainer Optional

BIN TYPE	CAPACITY	'I/S WIDTH'	'WIDTH'	UNIT WEIGHT
MCSD9	0.95 m ³	900mm	1010mm	*180 kg
MCSD12	1.25 m ³	1200mm	1310mm	*205 kg
MCSD18	1.85 m ³	1800mm	1910mm	*245 kg

* NOTE: UNITS WITH OPTIONAL WHEELS - ADD 18 kg

