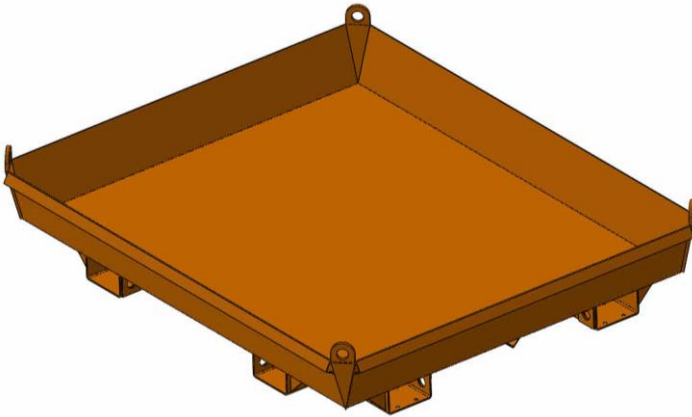


# CONCRETE COLLECTION TRAY MCC110 SPECIFICATIONS



The type MCC110 Concrete Collection Tray has been designed to limit environmental damage wherever a concrete pump is being used on site. This low profile tray fits under the concrete pump to collect spillage washout water and concrete waste. The Tray is fitted with Fork Pockets and Crane Lugs and is manufactured with tapered sides. The overall size of the Tray is 1860 mm x 1560 mm x 360 mm.

The standard finish on the Tray is enamel painted.

## SPECIFICATIONS:

- Working Load Limit: 1000kg
- Unit Weight: 150kg
- Capacity: 0.50 cubic metres

## OPTION:

- Wheel Kit (upon request)

