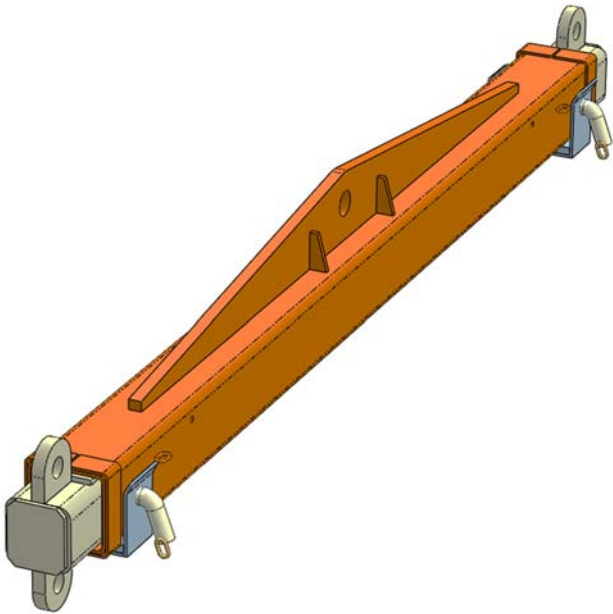


LIFTING BEAMS

LCEM2439 SPECIFICATIONS



The LCEM2439 Lifting Beam is a unique multi-tasking beam, which can be used to lift long loads by crane. Supplied with 2 retaining brackets for storage on truck trays, this spreader beam is designed to suit truck mounted cranes.

Loads can be lifted via the centre single hook point (as a 'Lifting Beam'), or end lifted using a 2 leg Chain Sling (as a 'Spreader Beam'). The Spreader Beam load connection points are adjustable to 3 positions by moving the extendable arms each end. Both extendable arms are locked into position via safety pins. The unit is supplied standard with a safety swivel hook at each end.

The main body is painted in 'Safety Orange' and the extendable arms are zinc-plated. The unit is fully 'Third Party' certified to relevant Australian Standards - Certification supplied upon request.

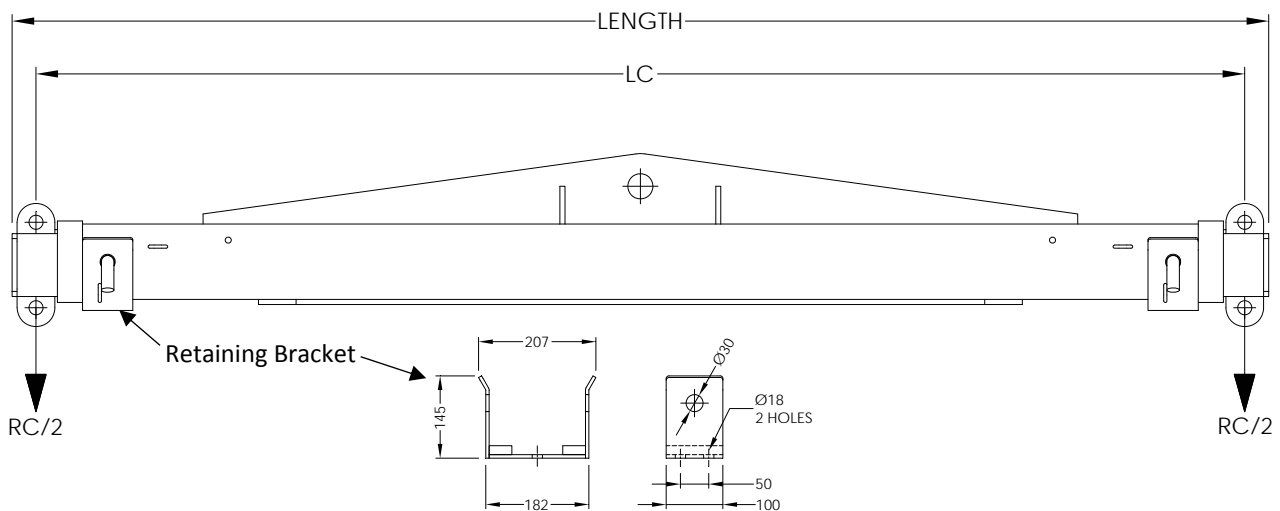
SPECIFICATIONS:

Rated Capacity: See the load chart below

Load Centre (LC): See the load chart below

Unit Weight: 218 kg

Overall size @ LC 2380: 275 (W) x 382 (H) x 2500 (L)



LCEM2439 LOAD CHART:

RATED CAPACITY (RC) WHEN USED AS	FULLY RETRACTED (LC @ 2380mm)	MIDDLE POSITION (LC @ 3140mm)	FULLY EXTENDED (LC @ 3900mm)
LENGTH	2500mm	3260mm	4020mm
LIFTING BEAM	6000KG	4500KG	2400KG
SPREADER BEAM	10,000KG	10,000KG	10,000KG