

# LARGE AREA MAGNETIC SWEEPER SPECIFICATIONS

Our Large Area Magnetic Sweeper (MLAMS15 & MLAMS21) consists of a multi-pole Neodymium (Rare Earth) deep-reaching magnet element within an enclosed fabricated aluminium housing and stainless steel faceplate. Model MLAMS15 is 1500 mm wide and MLAMS21 is 2100 mm wide.

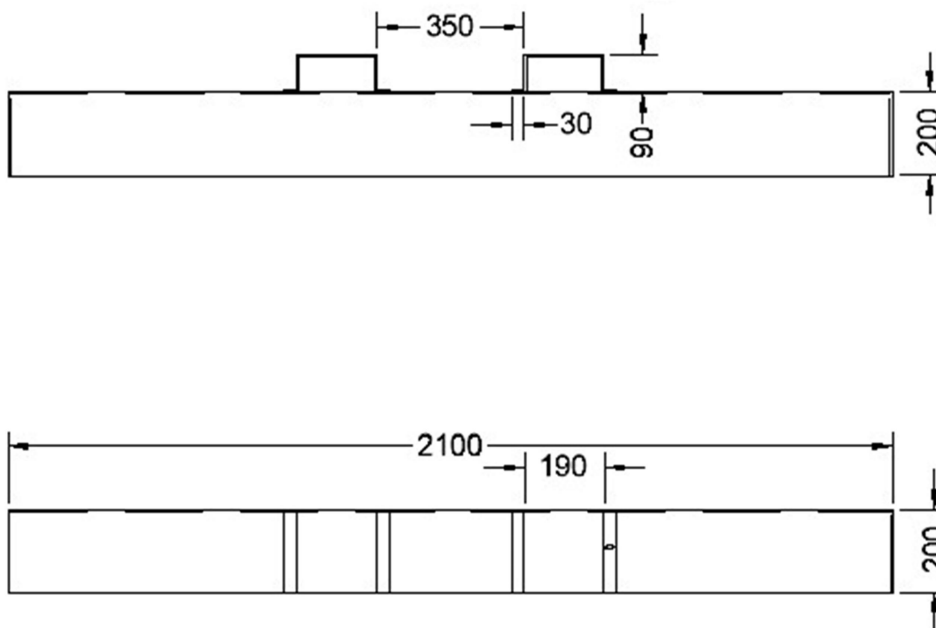
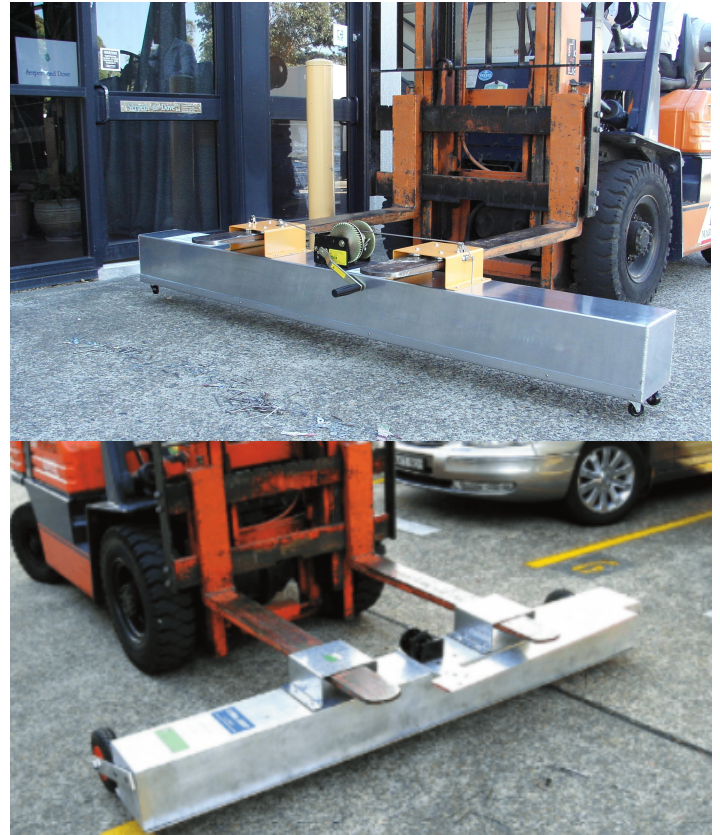
The multi-pole magnet element is attached by heavy duty cable to a small hand-operated winch on top of the housing. The magnet element is retractable by means of the cable and winch so that as it is winched upward from the floor of the enclosure, collected iron scrap is discharged.

Magnetic field strength at 70 mm is approximately 70 mTelsa (700 Gauss) making the sweeper capable of collecting any steel or iron item shaped like a nail or screw as well as spherical objects and iron filings.

The forklift model is fitted with receptacles for the forklift tynes and has castors on the bottom for standing on when not in use or for wheeling to storage. Ferrite magnets in the tyne receptacles help retain the LAMS in position.

The tow model can be fitted with large diameter wheels with pneumatic tyres.

Weight is approximately 30 kgs for the MLAMS15 and 35 kgs for the MLAMS21.



MLAMS21 Overall Dimensions

Australia Wide Sales & Service

sales@materialshandling.com.au | www.materialshandling.com.au | 1300 25 84 07

**MATERIALS**  
**Handling** PTY LTD *Working with ease.*