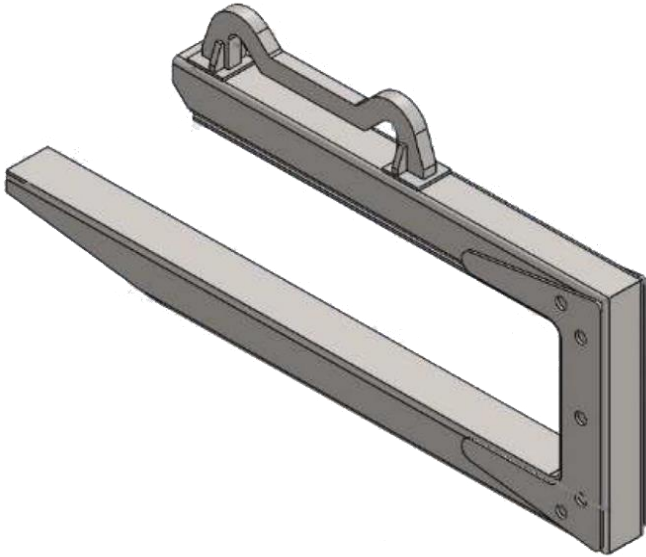


CONCRETE PIPE LIFTER LCQM125 SPECIFICATIONS



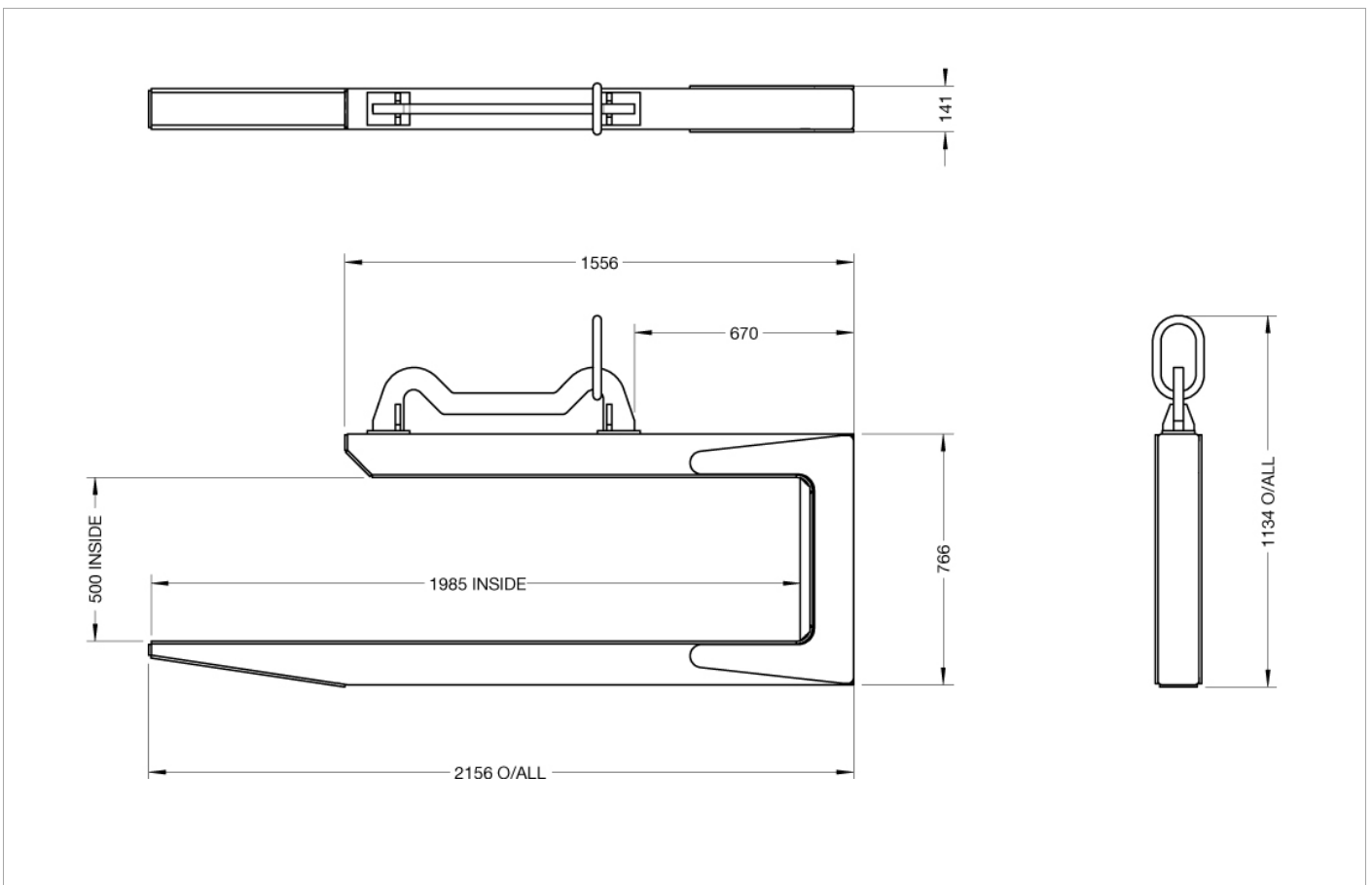
The LCQM125 Concrete Pipe Lifter is designed to safely handle concrete pipe sections or similar by overhead crane.

Suited to pipe sections with a length of 2450mm. The load is balanced by moving the lifting ring between the loaded and unloaded positions, allowing pipes to be lifted, transported and placed.

Also available in a 2.5T WLL model (LCQM250).

SPECIFICATIONS:

Working Load Limit (WLL): 1250 kg
Load Centre: 1200 mm
Inside Clearance: 500 mm
Clear Hook Arm Length: 1985 mm
Unit Weight: 160 kg



Australia Wide Sales & Service

sales@materialshandling.com.au | www.materialshandling.com.au | 1300 25 84 07

MATERIALS
Handling PTY LTD *Working with ease.*