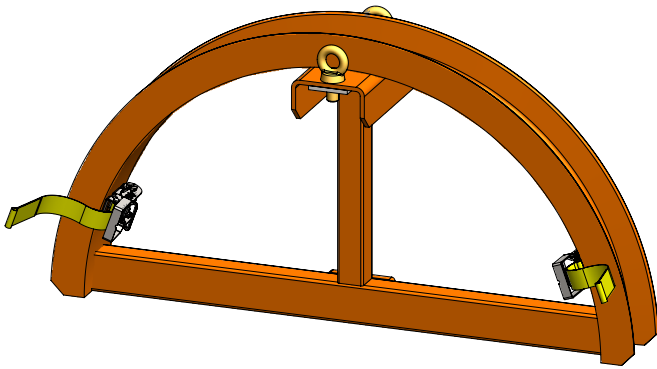


CONCRETE PUMP LINE HANGER MCML50 SPECIFICATIONS



The MCML50 Concrete Pump Line Hanger is designed to support the suspended concrete pump hose line off of the ground and guide to the delivery point by overhead crane or telehandler, allowing greater site coverage.

Having an overhead crane or telehandler available, MCML50 reduces the requirement and cost for a boom pump. The bend radius of the saddle prevents the hose from being damaged.

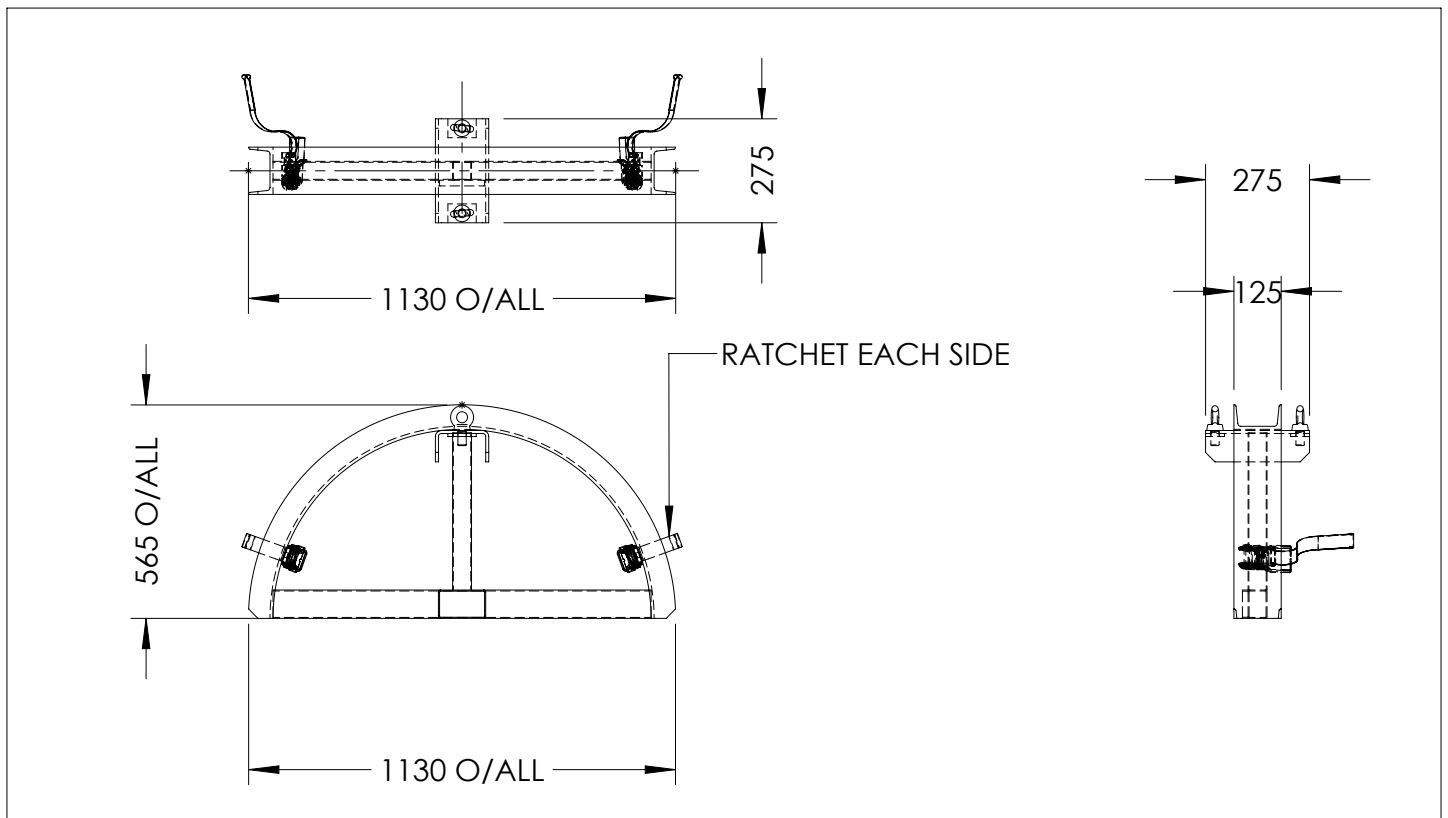
The item comes with a lifting chain.

SPECIFICATIONS:

Working Load Limit: 500 kg

Unit Weight: 37 kg

Finish: Enamel Paint, Safety Orange



Australia Wide Sales & Service

sales@materialshandling.com.au | www.materialshandling.com.au | 1300 25 84 07

MATERIALS
Handling PTY LTD *working with ease.*