

KNOCKOUT DOCK DOOR PxV SPECIFICATIONS

Performance and Value in a Knockout Dock Door



Productivity at the loading dock continues to be as challenging as ever. More product and more volume equals more damage and high maintenance costs. Prevent damage before it occurs by using the right solution – the PxV Knockout Door by DL Manufacturing. PxV's innovative design allows it to flex and get out of harms way upon impact, keeping productivity up and maintenance costs down.

PxV™ Features -

- **Patented Polymer guide system** – PxV uses a brush system instead of rollers, allowing for a continuous seal and a long lasting design that has the ability to knockout without costly door damage.
- **High Performance** – PxV's rugged design resists damage from impact better than other knockout dock doors.
- **Exclusive Self-Correcting Design** – Simply open and close to re-set, no spring loaded rollers or pins to maintain.
- **Flexible, 1.75" thick, insulated panels** – PxV's panels are lightweight and insulated, suitable for refrigerated loading docks.

The continuous seal design of PxV's innovative brush system eliminates air and light gaps at the loading dock door – making PxV **ideal for food handling facilities and for facilities looking to reduce energy costs.**



Why Use Brush Technology. .



...It eliminates air and light gaps with a continuous seal.



...It allows the dock door to knockout and reset easier.

Australia Wide Sales & Service

sales@materialshandling.com.au | www.materialshandling.com.au | 1300 25 84 07

MATERIALS
Handling PTY LTD *Working with ease.*

SPECIFICATIONS

PxV Dock Door

- Panels:** 1 3/4" Hot Dipped Galvanized Steel Sheets, Steel-Foam-Steel Sandwich
- Insulation:** Polyurethane Foam R-16
- Door sizes:** Up to 10' x 10'
- Door Reset:** Self Correcting - Resets by opening and closing the door
- Side Brush Seals:** Polypropylene
- Top Seal:** PVC - Vinyl
- End Cap:** Extruded, Impact Resistant PVC
- Track:** PVC
- Knockout Capability:** Full – top to bottom, inside or out
- Lock:** Offers intruder security

Torsion Springs

- Spring Cycle:** 15K (Standard), 25 or 50 K optional
- Cables:** 5/32" - 7 x 19 Mill Spec, Galvanized Cable
- Shaft:** 1" Tube Shaft
- Bearings:** 1" UCF Precision Flange Bearing

Counterweight

- Counterweights:** Cold Rolled Steel w/primer
- Cables:** 3/16" - 7 x 19 Mill Spec, Galvanized Cable
- Shaft:** 1" Keyed, Solid Shaft
- Bearings:** 1" UCF Precision Flange Bearing

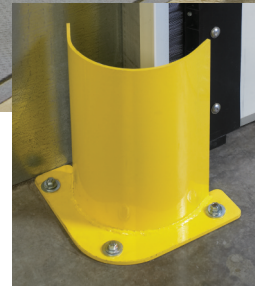
Check out our other dock doors



OPTIONS



Vision Panel –
is insulated and offers the added safety of visible verification of truck activity.



Track Guard –
protects the base of the track in an area prone to collision damage.

PxVTM
ENERGY-ABSORBING DOCK DOOR
PATENTED

Australia Wide Sales & Service

sales@materialshandling.com.au | www.materialshandling.com.au | 1300 25 84 07

MATERIALS
Handling PTY LTD *Working with ease.*