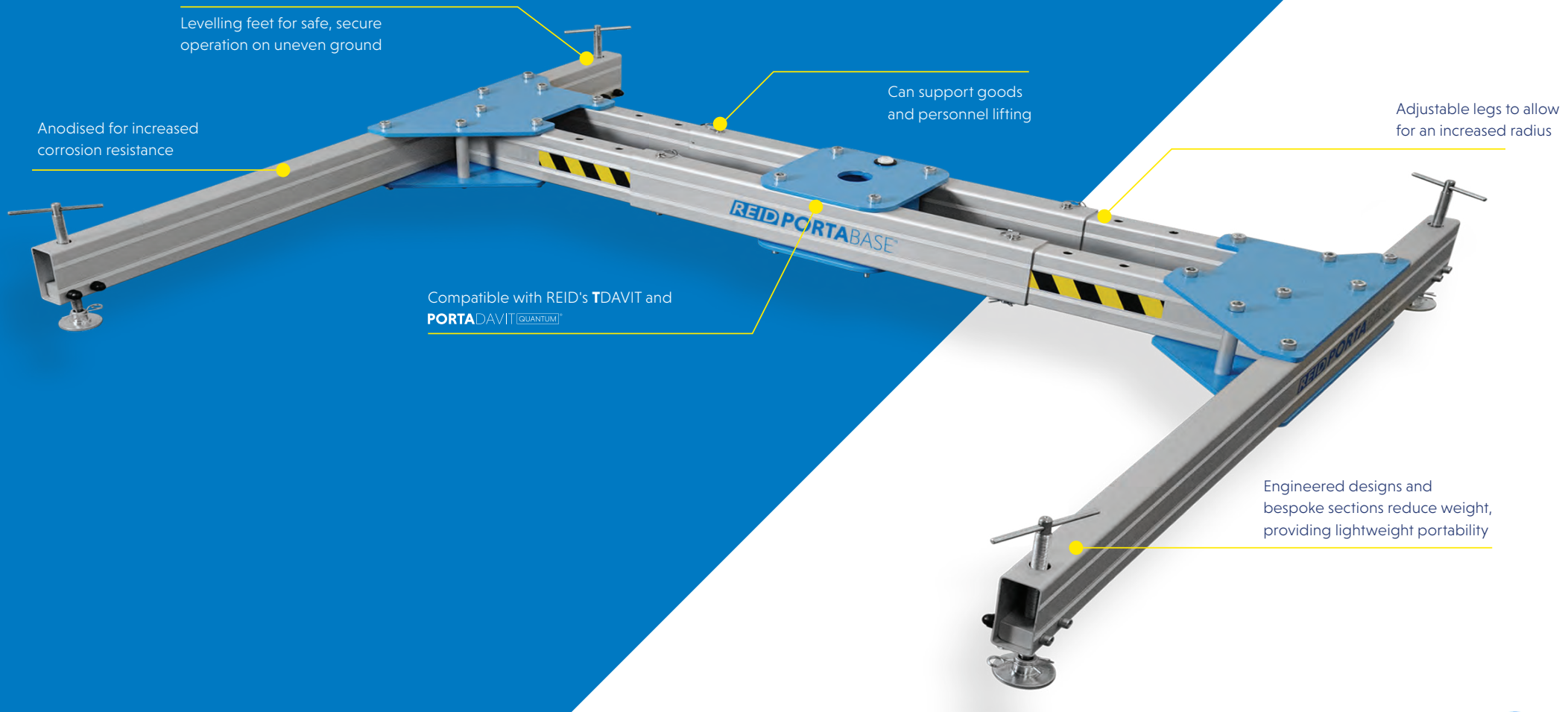


▶ PORTABASE[®] H Base



Levelling feet for safe, secure operation on uneven ground

Anodised for increased corrosion resistance

Can support goods and personnel lifting

Adjustable legs to allow for an increased radius

Compatible with REID's TDAVIT and PORTADAVIT^{QUANTUM}

Engineered designs and bespoke sections reduce weight, providing lightweight portability

MATERIALS
Handling *Working with ease...*
PTY LTD

The **PORTABASE H Base** is a three piece, portable system which can be easily broken down for transportation.

Expertly engineered to provide full use and compatibility with the **TDAVIT** and **PORTADAVIT^{QUANTUM}** providing maximum flexibility where the installation or use of a fixed socket is not possible.

The **PORTABASE H Base** enables our Davit products to be used for lifting goods up to 600kg, as well as providing access and egress for confined space and work at height tasks, including as an anchor point for fall arrest scenarios.

Key features

- EN795:2012 Certified
- Can support goods and personnel lifting;
 - Goods WLL of up to 600kg
 - Personnel WLL of up to 300kg
- Breaks down in to 3 components for ease of transportation
- Designed for ease of assembly using pins, with no bolted sections or the need for tools
- Detachable legs for ease of transportation
- Levelling feet designed to support the system to function correctly on uneven ground
- Compatible with the use of **TDAVIT** and **PORTADAVIT^{QUANTUM}**
- Clean, anodised finish for increased corrosion resistance
- Engineered designs and bespoke sections reduce weight, providing lightweight portability



**600KG
WLL**



**1-2 PERSON
ASSEMBLY**



**3 MANAGEABLE
COMPONENTS**



**EN795
CERTIFIED**

Features & Performance

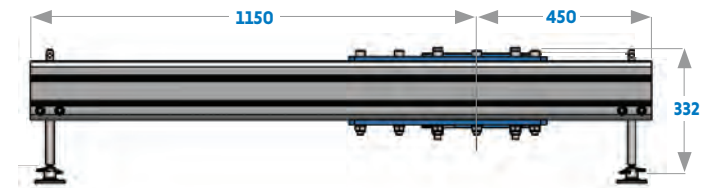
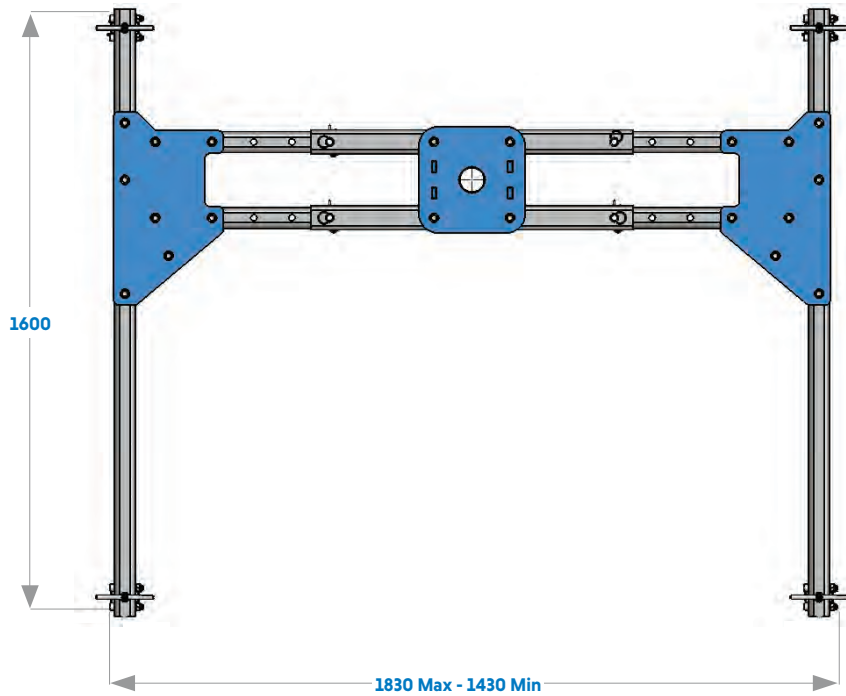
	H BASE
Accreditations, Certifications & Standards	
EN795:2012	✓
ANSI Z359.18-17	✓
ATEX Certified [Zone 2]	Optional
IRATA	✓
Capacity	
Maximum Goods Lifting [kg]	600
Maximum Personnel Lifting [kg]	300
Fall Arrest [Persons]	1
Maximum Radius [mm]	800
Dimensions	
Minimum Base Width [mm]	1430
Maximum Base Width [mm]	1830
Minimum Base Height [mm]	217
Maximum Base Height [mm]	332
Overall Length [mm]	1600
Compatible Products	
Porta Davit Quantum [Restricted]	✓
Porta Davit Quantum [1]	X
Porta Davit Quantum [2]	X
T Davit [Shackled]	✓
T Davit [Winched]	✓
T Davit [Double Winched]	✓
Standard Features	
Levelling Feet	✓
Individual Component Weight < 25kg	✓
No Tools Required	✓
Finishes	
Anodised / Powder Coated	✓
316SS Fixings	Optional
Marine Spec	Optional

Dimensions in the table are approximate values. For more accurate details please refer to the Dimension Table.

All line items marked with a '✓' come as standard. All line items marked with a 'X' are not available.

All line items marked with 'optional' are available as an option and may incur additional costs.

PORTABASE® H Base



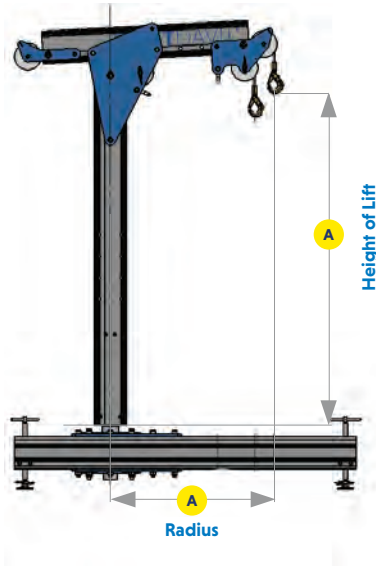
Product Code	Description
PBHB00001	PORTABASE H Base Standard - Max 800mm Radius

Dimensions

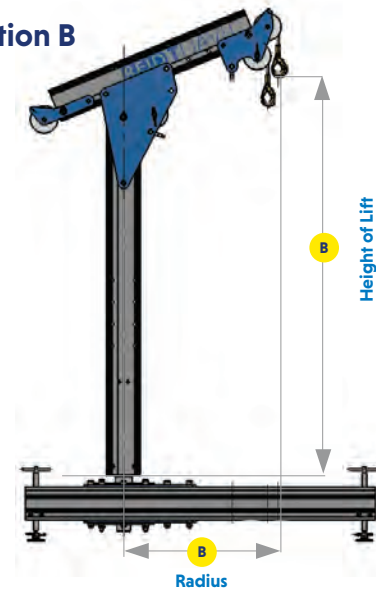
Component	Weight [kg]
Central Hub	18.5kg
Leg Assembly [Each]	22.5kg
Total Weight	63.5kg

PORTABASE® H Base | TDAVIT® Double Winched

Position A



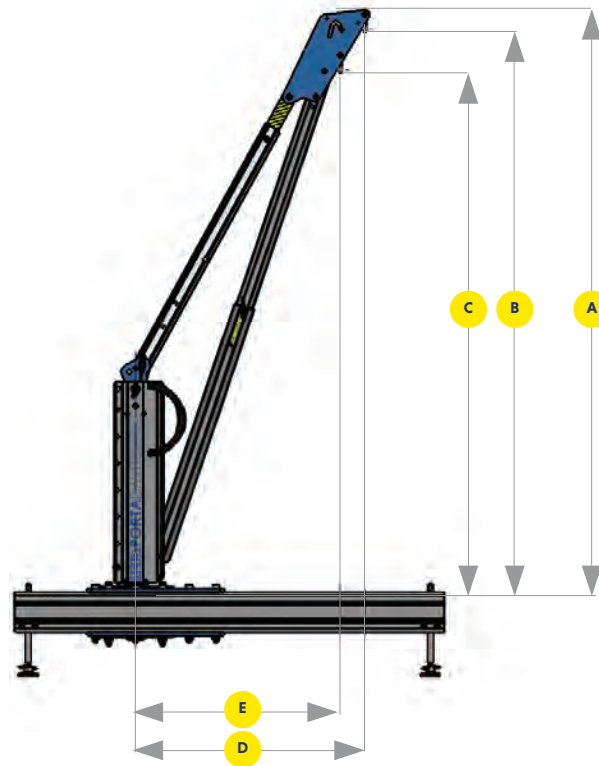
Position B



PRODUCT CODE	HEIGHT OF LIFT (HOL) (MM)		RADIUS (MM)		WLL			WEIGHT (KG)
	Position A	Position B	Position A	Position B	Goods [kg]	Personnel [kg]	Fall Arrest	
TDDWA3A0	1290	1540	800	740	600	300	1 person	34
TDDWA4A0	1605	1855	800	740	600	300	1 person	36
TDDWA5A0	1915	2165	800	740	600	300	1 person	39

PORTABASE® H Base | PORTADAVIT QUANTUM®

- A** Overall height
- B** Height to outer shackle
- C** Height to inner shackle
- D** Radius to outer shackle
- E** Radius to inner shackle



DIMENSIONS (MM)

PRODUCT CODE	GOODS WLL (KG)	PERSONNEL WLL (KG)	FALL ARREST	RADIUS ADJUSTMENT POINTS	A	B	C	D*	E*
PDQR	600	300	1 person	1	2150	2078	1928	800	700

*Radii achieved at ≈ 75% WLL

▶ PORTABASE[®] Counterbalance

Levelling feet for safe, secure operation on uneven ground

Detachable folding basket with integrated swivel-locking castors

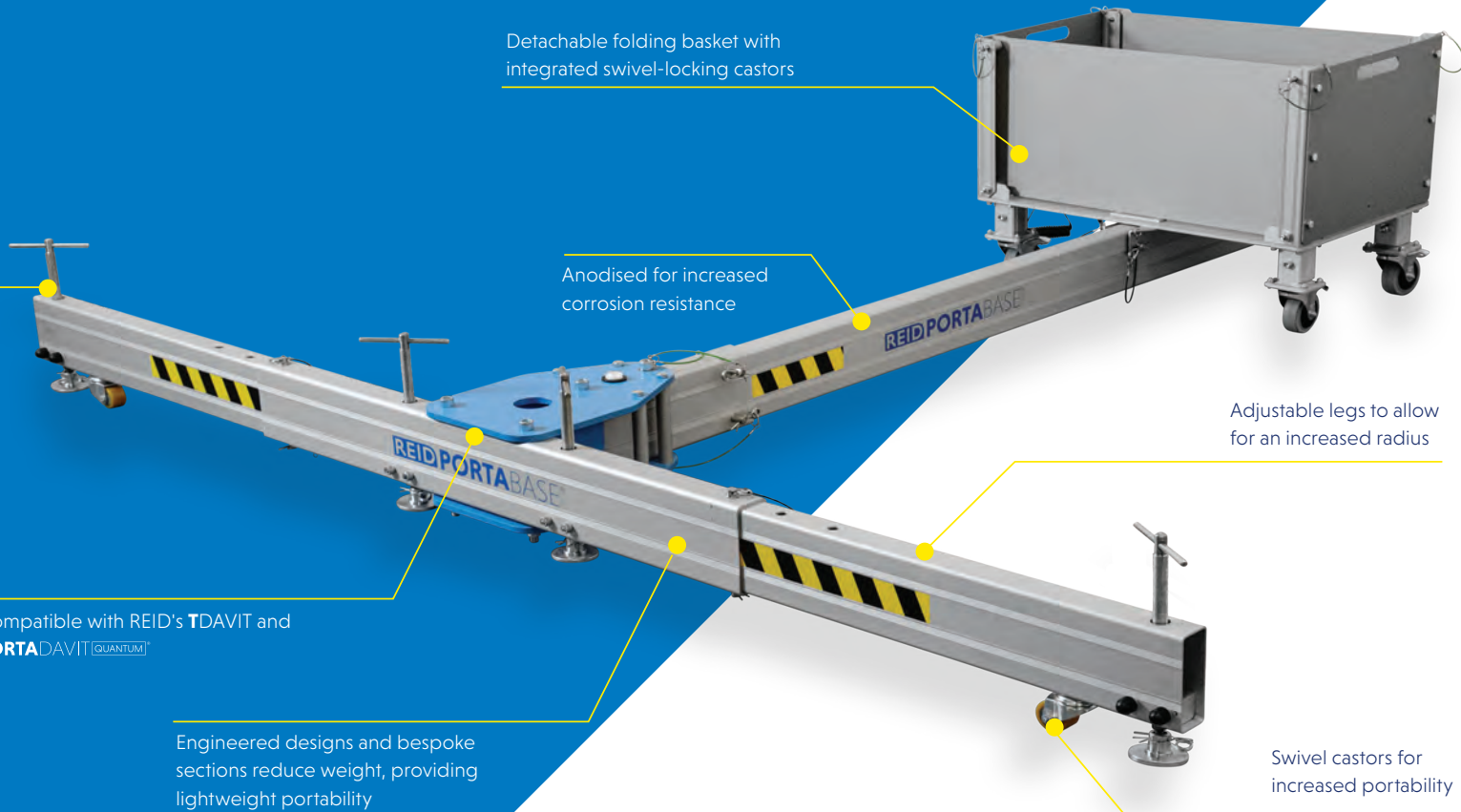
Anodised for increased corrosion resistance

Adjustable legs to allow for an increased radius

Compatible with REID's TDAVIT and PORTADAVIT^{QUANTUM}

Engineered designs and bespoke sections reduce weight, providing lightweight portability

Swivel castors for increased portability



MATERIALS
Handling *Working with ease...*
PTY LTD

The **PORTABASE** Counterbalance is a five piece, portable system which can be easily broken down for transportation.

Expertly engineered, the system is compatible with the **TDAVIT** and **PORTADAVIT^{QUANTUM}** providing maximum flexibility where the installation or use of a fixed socket is not possible. The product is quick and easy to set up with no tools required.

The **PORTABASE** Counterbalance enables our Davit products to be used for lifting goods up to 600kg, as well as providing access and egress for confined space and work at height tasks, including as an anchor point for fall arrest scenarios.

Key features

- › EN795:2012 Certified
- › Can support goods and personnel lifting;
 - › Goods WLL of up to 600kg
 - › Personnel WLL of up to 300kg
- › Breaks down in to 5 components for ease of transportation and stowage
- › Designed for ease of assembly using pins, with no bolted sections or the need for tools
- › Detachable legs and foldable basket for ease of transportation
- › Levelling feet designed to support the system to function correctly on uneven ground
- › Integrated swivel castors, as standard
- › Compatible with the use of **TDAVIT** and **PORTADAVIT^{QUANTUM}**
- › Clean, anodised finish for increased corrosion resistance
- › Uses 20kg hand weights for the basket, reducing manual handling risks
- › Engineered designs and bespoke sections reduce weight, providing lightweight portability

Configurations

Height adjustable feet can be fitted to the **PORTABASE** Counterbalance basket, providing an adjustment of 230mm.



**600KG
WLL**



**1-2 PERSON
ASSEMBLY**



**5 MANAGEABLE
COMPONENTS**



**EN795
CERTIFIED**

Features & Performance

COUNTERBALANCE

Accreditations, Certifications & Standards

EN795:2012	✓
ANSI Z359.18-17	✓
ATEX Certified [Zone 2]	Optional
IRATA	✓

Capacity

Maximum Goods Lifting [kg]	600
Maximum Personnel Lifting [kg]	300
Fall Arrest [Persons]	1
Maximum Radius [mm]	1200

Dimensions

Minimum Base Width [mm]	2320
Maximum Base Width [mm]	2720
Minimum Base Height [mm]	240
Maximum Base Height [mm]	332
Overall Length [mm]	2415

Compatible Products

Porta Davit Quantum [Restricted]	✓
Porta Davit Quantum [1]	✓
Porta Davit Quantum [2]	X
T Davit [Shackled]	✓
T Davit [Winched]	✓
T Davit [Double Winched]	✓

Standard Features

Levelling Feet	✓
Individual Component Weight < 25kg	✓
No Tools Required	✓
Swivel Castors	✓

Finishes

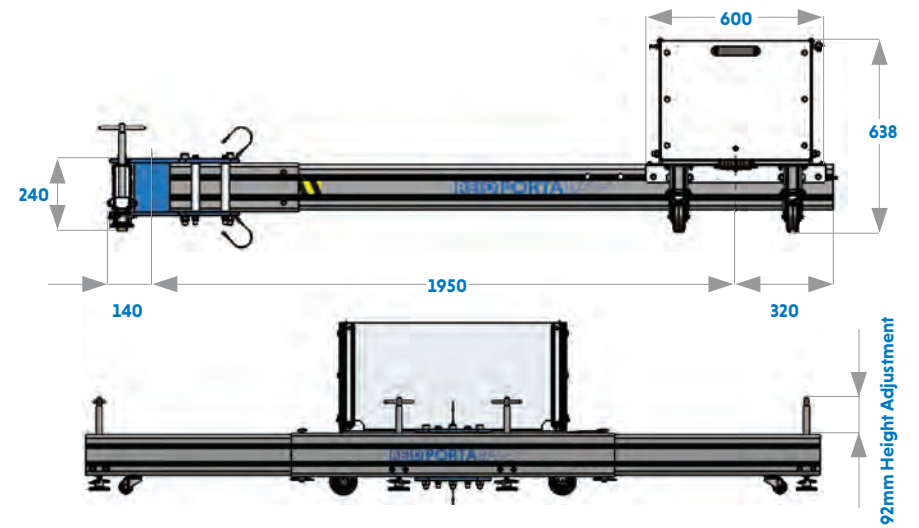
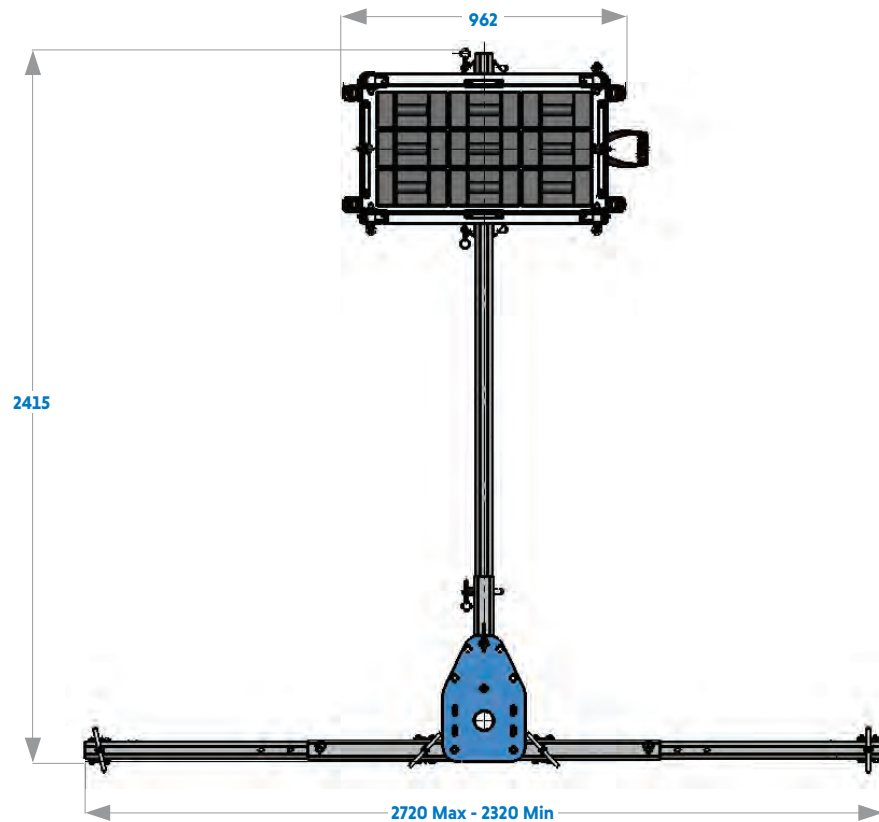
Anodised / Powder Coated	✓
316SS Fixings	Optional
Marine Spec	Optional

Dimensions in the table are approximate values. For more accurate details please refer to the Dimension Table.

All line items marked with a '✓' come as standard. All line items marked with a 'X' are not available.

All line items marked with 'optional' are available as an option and may incur additional costs.

PORTABASE® Counterbalance



Dimensions

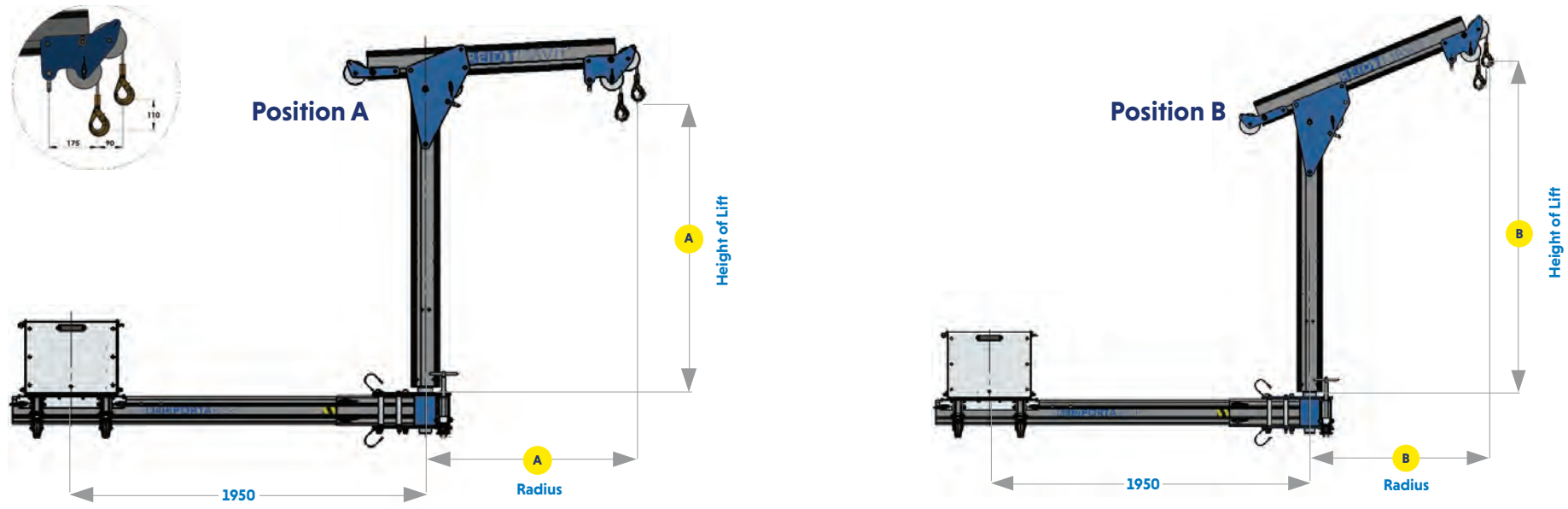
Component	Weight [kg]
Central Hub	24kg
Leg Assembly [Each]	5kg
Tail	6kg
Basket [Empty]	38kg
Total Weight	78kg

Product Code	Description
PBCB00001	PORTABASE Counterbalance Standard - Max 1200mm Radius
RAHW00001	Hand Weight [1 x 20kg]
RAHW00003	360kg Hand Weight Set [18 x 20kg]
RAHW00004	540kg Hand Weight Set [27 x 20kg]
RAPBCB0001	Porta Base Counterbalance Basket Height Adjustment Kit



A height adjustment kit can be fitted to the basket, providing an adjustment of 230mm.

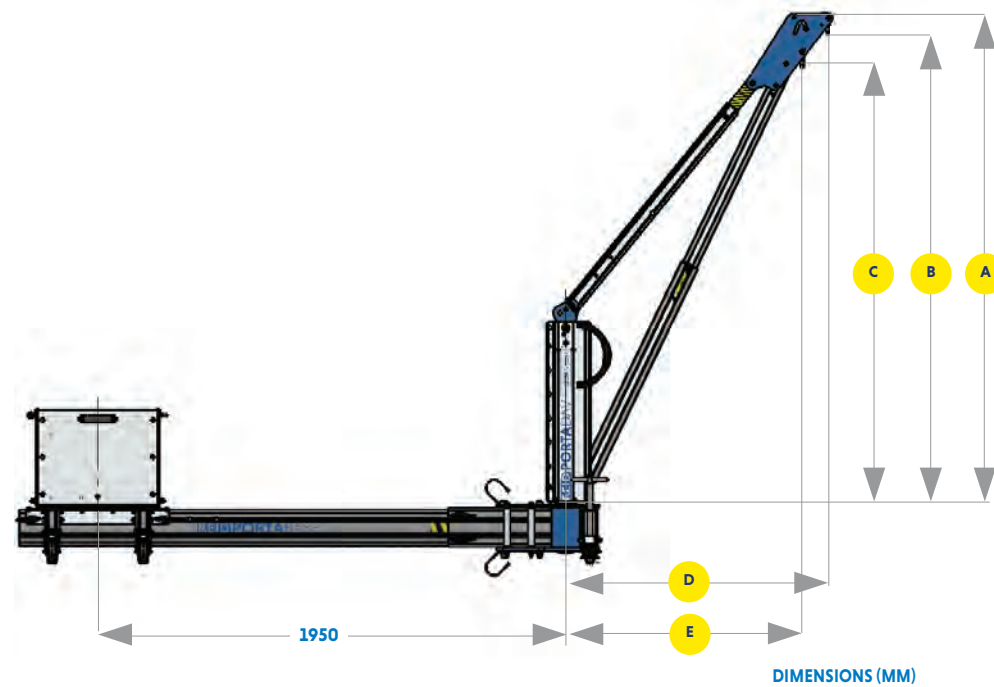
PORTABASE® Counterbalance | TDAVIT® Double Winched



PRODUCT CODE	HEIGHT OF LIFT (HOL) (MM)		RADIUS (MM)		WLL			WEIGHT (KG)
	Position A	Position B	Position A	Position B	Goods [kg]	Personnel [kg]	Fall Arrest	
TDDWA3A0	1290	1540	800	740	600	300	1 person	34
TDDWA3A1	1300	1615	1000	925	500	250	1 person	35
TDDWA3A2	1310	1690	1200	1110	400	200	1 person	36
TDDWA4A0	1605	1855	800	740	600	300	1 person	36
TDDWA4A1	1615	1930	1000	925	500	250	1 person	37
TDDWA4A2	1625	2005	1200	1110	400	200	1 person	38
TDDWA5A0	1915	2165	800	740	600	300	1 person	39
TDDWA5A1	1925	2240	1000	925	500	250	1 person	40
TDDWA5A2	1935	2315	1200	1110	400	200	1 person	41

PORTABASE® Counterbalance | PORTADAVIT QUANTUM®

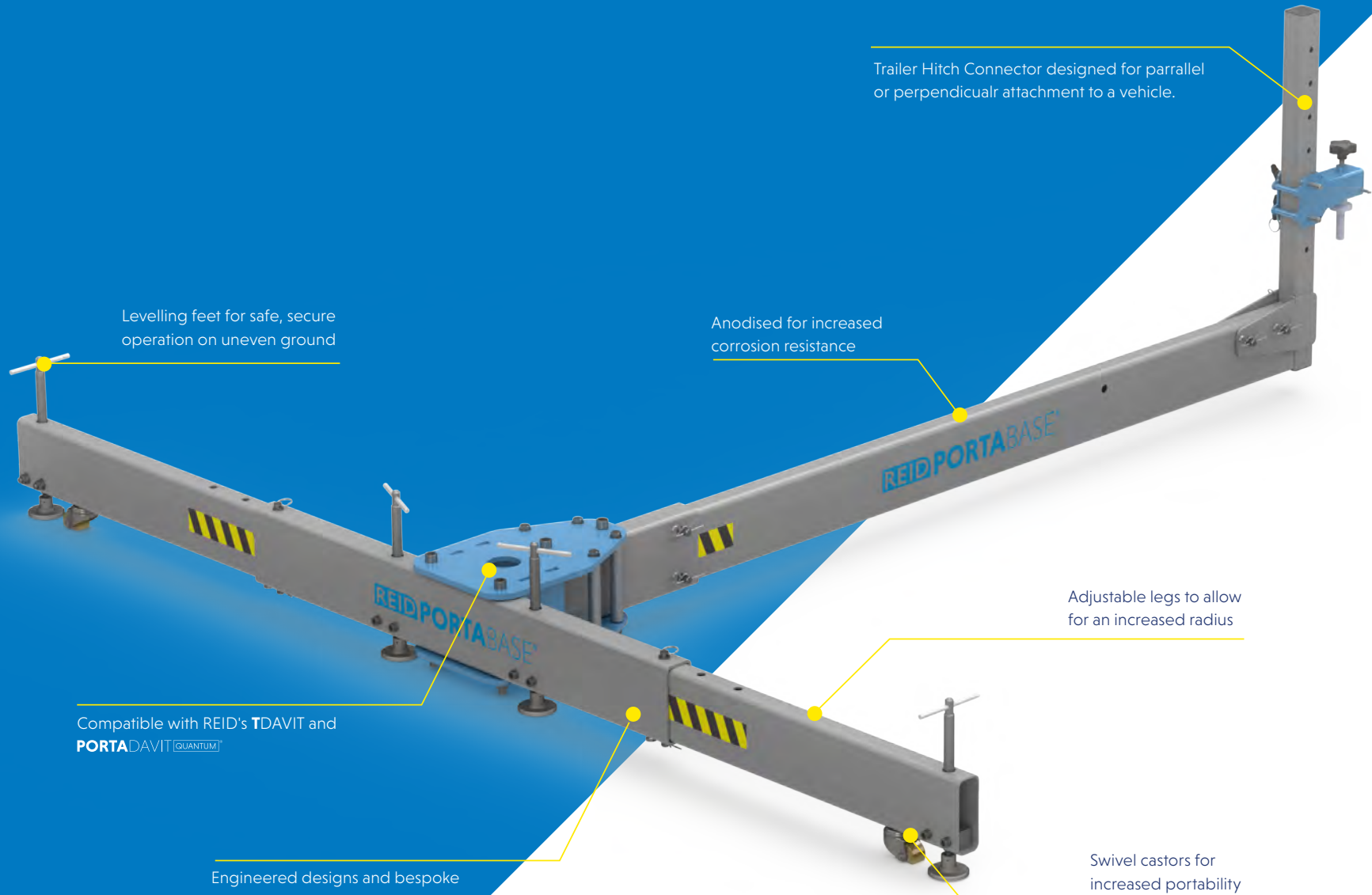
- A** Overall height
- B** Height to outer shackle
- C** Height to inner shackle
- D** Radius to outer shackle
- E** Radius to inner shackle



PRODUCT CODE	GOODS WLL (KG)	PERSONNEL WLL (KG)	FALL ARREST	RADIUS ADJUSTMENT POINTS	DIMENSIONS (MM)				
					A	B	C	D*	E*
PDQRW	600	300	1 person	1	2150	2078	1928	800	700
PDQ1W PDQ1S	400	200	1 person	1	2007	1935	1799	1200	1100
	450	225		2	2061	1989	1848	1100	1000
	500	250		3	2111	2039	1892	1000	900

*Radii achieved at ≈ 75% WLL

▶ PORTABASE[®] Counterbalance Trailer Hitch



Trailer Hitch Connector designed for parrallel or perpendicular attachment to a vehicle.

Levelling feet for safe, secure operation on uneven ground

Anodised for increased corrosion resistance

Adjustable legs to allow for an increased radius

Compatible with REID's TDAVIT and PORTADAVIT^[QUANTUM]

Engineered designs and bespoke sections reduce weight, providing lightweight portability

Swivel castors for increased portability

MATERIALS
Handling *Working with ease...*
PTY LTD

The **PORTABASE** Counterbalance Trailer Hitch is a portable system which can be easily broken down for transportation. The product is quick and easy to set up with no tools required.

The system is compatible with the **TDAVIT** and **PORTA****DAVIT** ^{QUANTUM} providing maximum flexibility where the installation or use of a fixed socket is not possible. This system has been designed to attach to a vehicle with a tow bar such as a Van or Truck. When in use with our Davits, it can be used for lifting goods up to 450kg as well as providing access and egress for confined space tasks.

Key features

- › EN795:2012 Certified
- › Can support goods and personnel lifting;
 - › Goods WLL of up to 450kg
 - › Personnel WLL of up to 225kg
- › Breaks down in to 6 components for ease of transportation and stowage
- › Incredibly lightweight structure with full system weighing 45kg
- › Designed for ease of assembly using pins, with no bolted sections or the need for tools
- › Levelling feet designed to support the system to function correctly on uneven ground
- › Integrated swivel castors, as standard
- › Compatible with the use of **TDAVIT** and **PORTA****DAVIT** ^{QUANTUM}
- › Easy connection to a van or truck weighing 2000kg
- › Can be connected parallel or perpendicular to the vehicle
- › Clean, anodised finish for increased corrosion resistance
- › Engineered designs and bespoke sections reduce weight, providing lightweight portability

Configurations

If you have already own a **PORTABASE** Counterbalance, the Trailer Hitch Connector can be bought separately.



**450KG
WLL**



**1 PERSON
ASSEMBLY**



**6 COMPONENTS
AT 45KG**



**EN795
CERTIFIED**

Features & Performance

COUNTERBALANCE TRAILER HITCH

Accreditations, Certifications & Standards

EN795:2012	✓
ANSI Z359.18-17	✓
ATEX Certified [Zone 2]	Optional
IRATA	✓

Capacity

Maximum Goods Lifting [kg]	450
Maximum Personnel Lifting [kg]	225
Fall Arrest [Persons]	1
Maximum Radius [mm]	1200

Dimensions

Minimum Base Width [mm]	2320
Maximum Base Width [mm]	2720
Minimum Base Height [mm]	240
Maximum Base Height [mm]	332
Overall Length [mm]	2620

Compatible Products

Porta Davit Quantum [Restricted]	✓
Porta Davit Quantum [1]	✓
Porta Davit Quantum [2]	X
T Davit [Shackled]	✓
T Davit [Winched]	✓
T Davit [Double Winched]	✓

Features

Levelling Feet	✓
Individual Component Weight < 25kg	✓
No Tools Required	✓
Swivel Castors	✓

Finishes

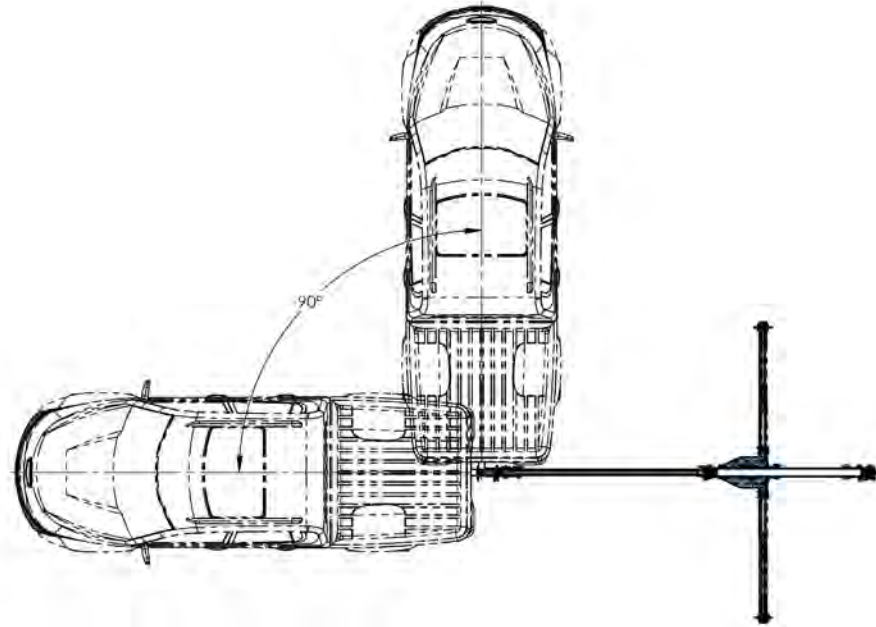
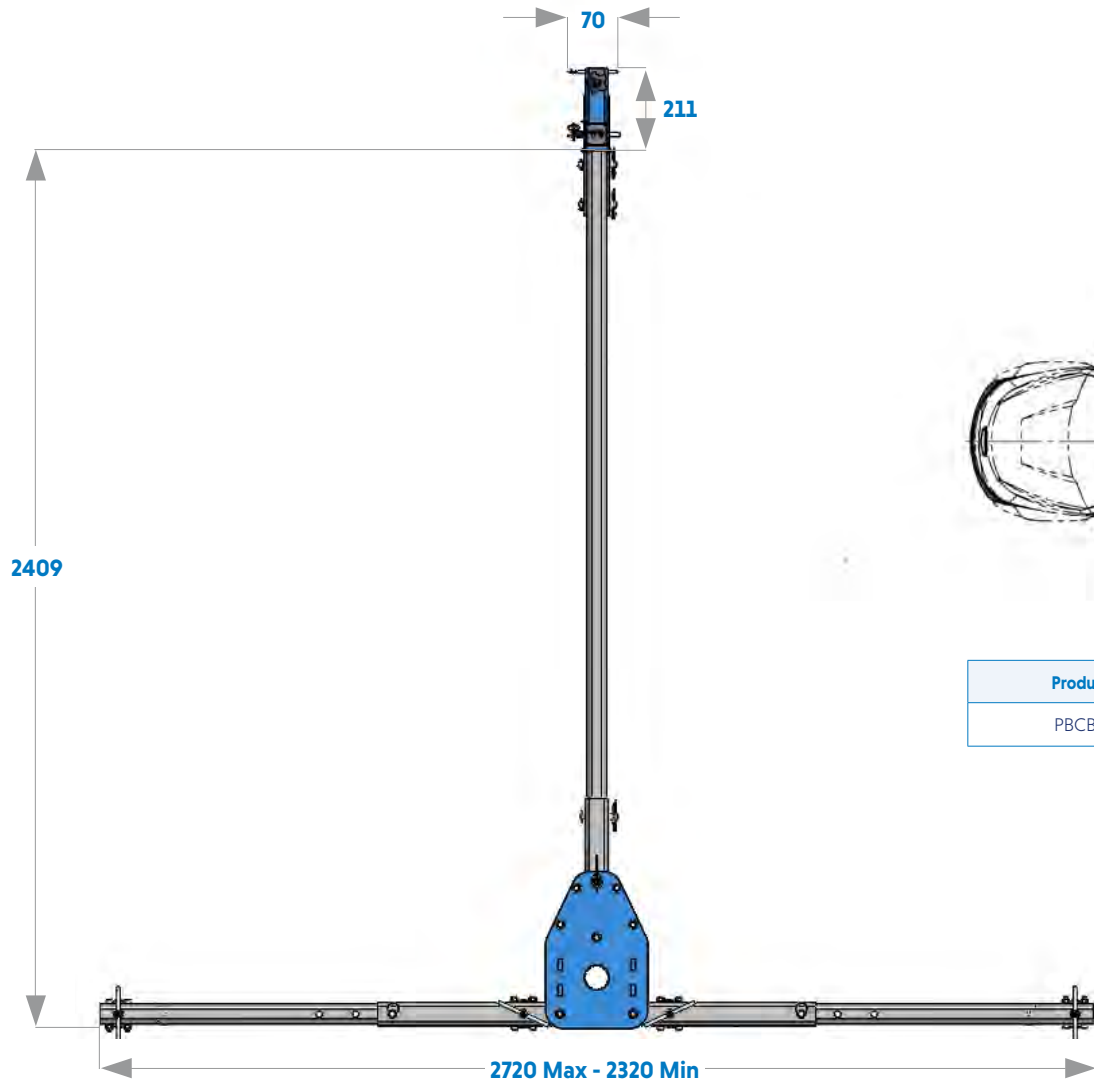
Anodised / Powder Coated	✓
316SS Fixings	Optional
Marine Spec	Optional

Dimensions in the table are approximate values. For more accurate details please refer to the Dimension Table.

All line items marked with a '✓' come as standard. All line items marked with a 'X' are not available.

All line items marked with 'optional' are available as an option and may incur additional costs.

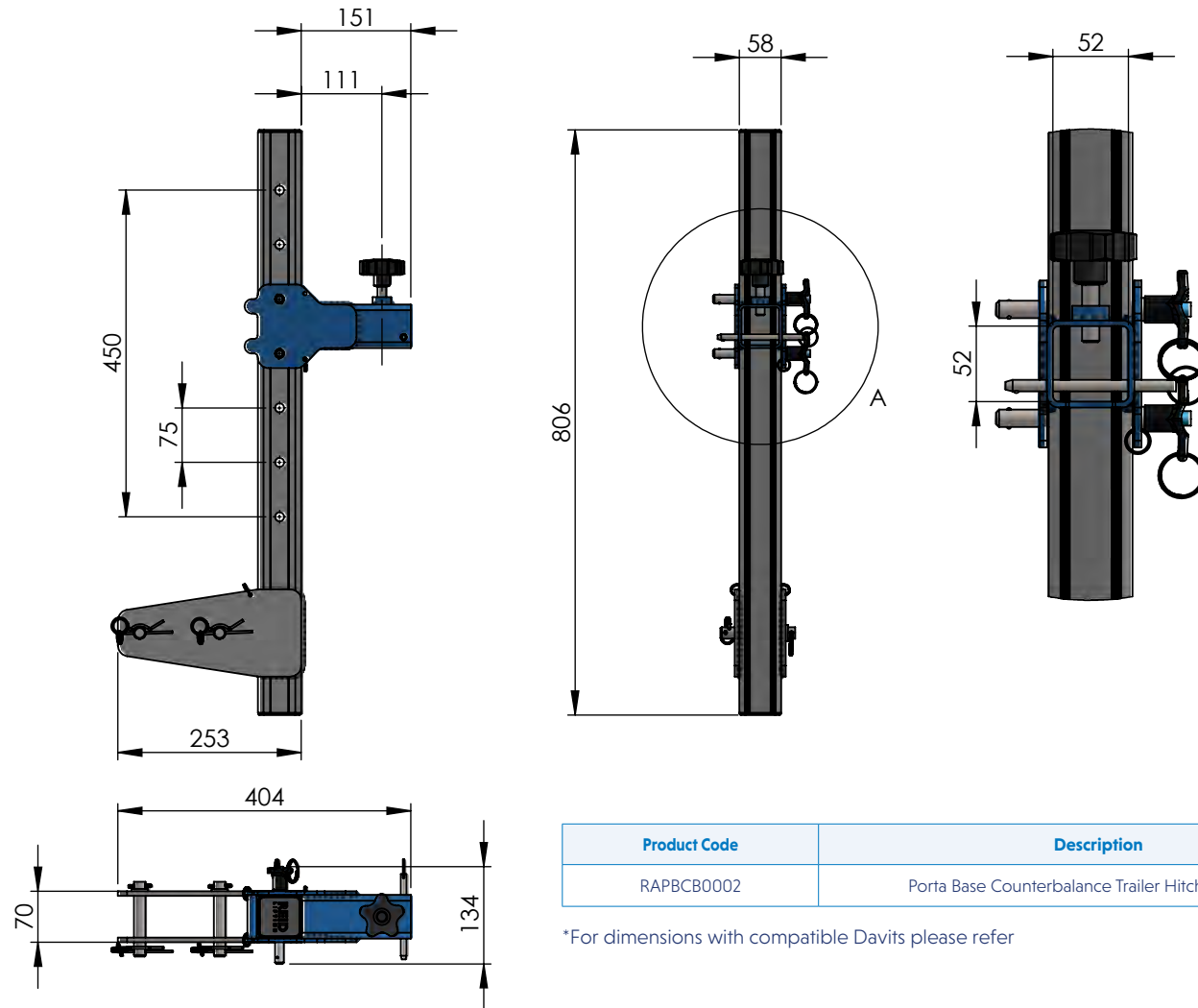
PORTABASE® Counterbalance Trailer Hitch



Product Code	Description
PBCB00003	Porta Base Counterbalance Trailer Hitch - Max 1200mm Radius

Dimensions	
Component	Weight [kg]
Central Hub	24kg
Leg Assembly [Each]	5kg
Tail	6kg
Trailer Hitch Connector	5kg
Total Weight	45kg

PORTABASE® Counterbalance Trailer Hitch Connector



Product Code	Description
RAPBCB0002	Porta Base Counterbalance Trailer Hitch Connector

*For dimensions with compatible Davits please refer