

PEDESTRIAN OPERATED TUG M10 SPECIFICATIONS



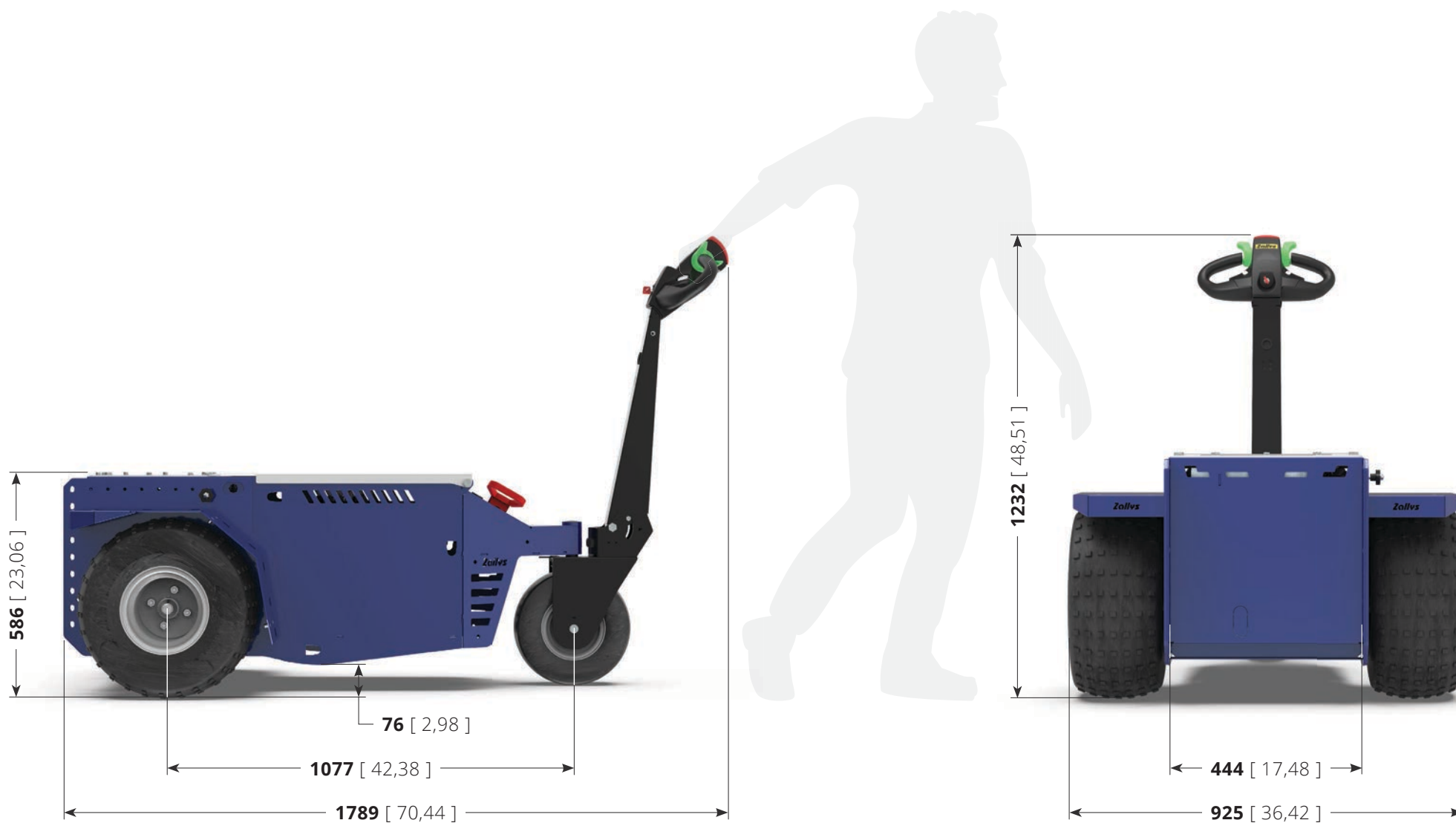
- For loads up to 10.000 kg (15.000 kg with upgrade).
- Pneumatic or superelastic wheels.
- 5-levels speed adjustment.
- Wide range of accessories and connections.
- Steering speed reduction (optional).
- Side buttons to ease connections (optional).

👁 Front View



👁 Side View





Zollys®

TABLE:
M10

Unit: mm [inch]

Main sectors



AUTOMOTIVE



RAILWAY
INDUSTRY



INDUSTRIAL
MAINTENANCE



METALLURGICAL
INDUSTRY

Performances on slopes

While the force expressed in N at the hook remains unchanged, the following circumstances **may affect the towing capacity expressed in kg**:

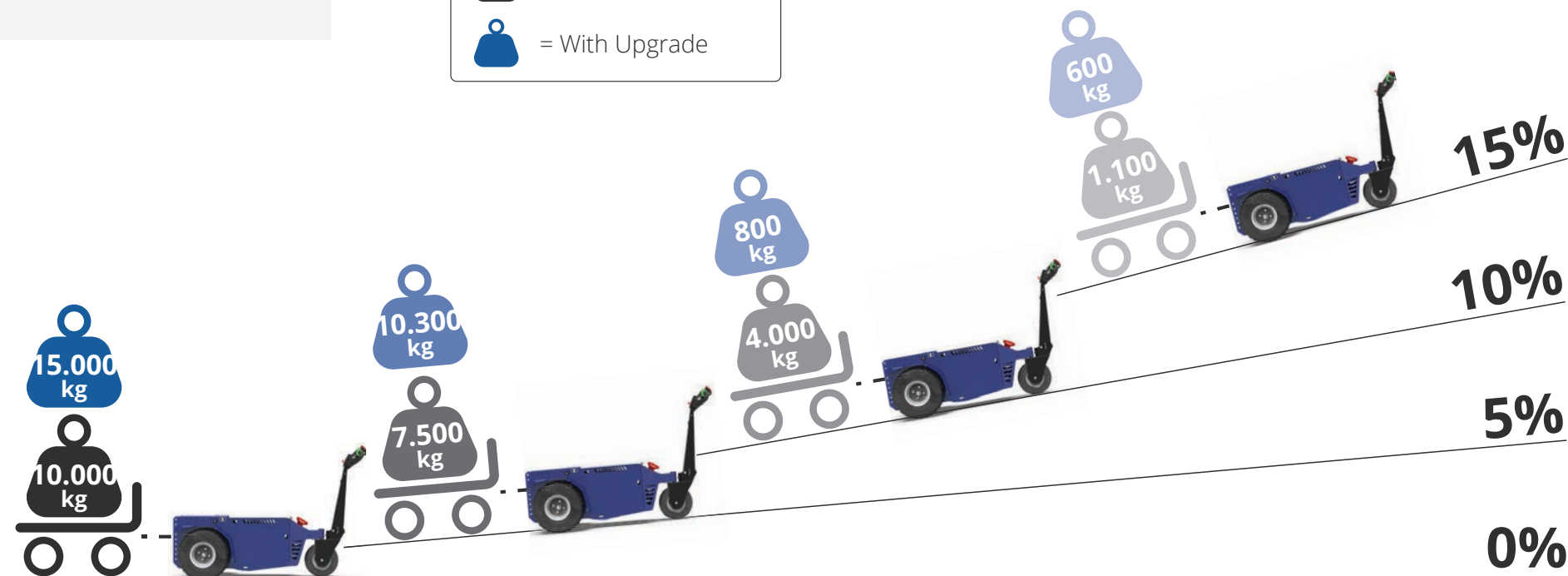
- **type of ground** on which the towing is performed;
- towing on **flat ground or on a slope**;
- use (or not) of **ballasts**;
- **type of wheels** mounted on the vehicle and on the trailer.



= Standard version



= With Upgrade



5 levels speed adjustment

On the new M10 tillerhead by Zallys is mounted **as standard** a button for the adjustment of the speed of the machine. By clicking it, at each click you switch to the next level. This allows a fast and easy selection of the correct speed based on the kind of manoeuvre. **The Flex-to-Go system** has been studied to give a better maneuverability in confined spaces and more speed on the longer journeys.

Each click adds **20% more speed**.

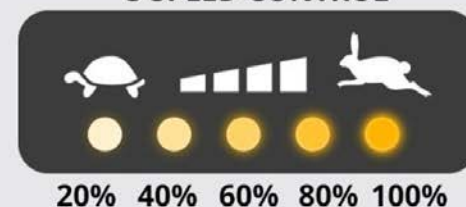
Speed ramp:

20% - 40% - 60% - 80% - 100%

Once the maximum speed is reached, by pressing the button again it returns to 20%.



5 SPEED CONTROL



Ergonomic driving

Zallys' tillerhead has been conceived and produced to make the use of the machine more ergonomic for the operator, guaranteeing the right **comfort while driving during the work shift**. Its **ergonomic design** allows to have **all the driving controls at your fingertips**, the display with the battery charge level and the power key for an easy and fast ignition. The **structure** is made of **resistant materials** in case of accidental bumps.

Power key

5 speed
selection

Anti-crush
reverse button



..... Dashboard

..... Acoustic alarm

..... Maintained action
drive controls



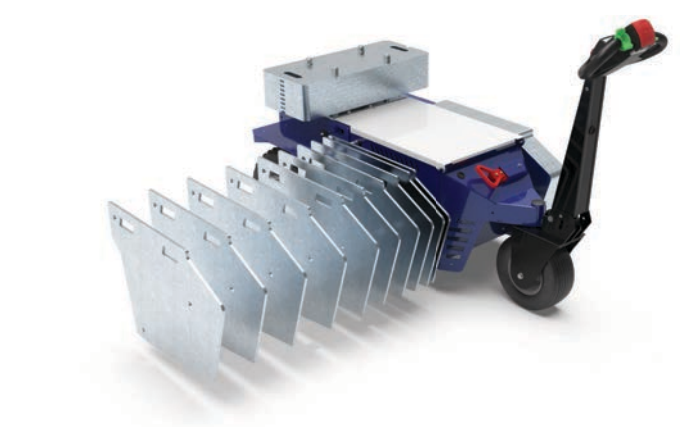
The right wheels for every need

M10 comes as standard with **pneumatic wheels**, suitable both for indoor and outdoor use, always guaranteeing the maximum grip and a really low level of vibrations. Moreover, they are very resistant and offer exceptional performances on every kind of ground. By purchasing the Upgrade, **M10** can be configured to tow up to **15.000 kg**; in this case, it will be equipped with **superelastic wheels** and reinforced axles to guarantee the resistance during the operation of such heavy loads.



Autonomy for a full workday

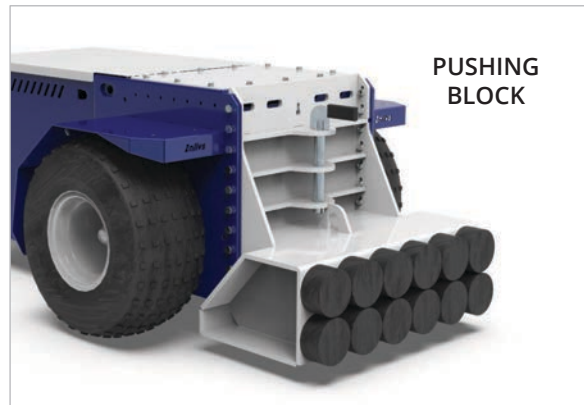
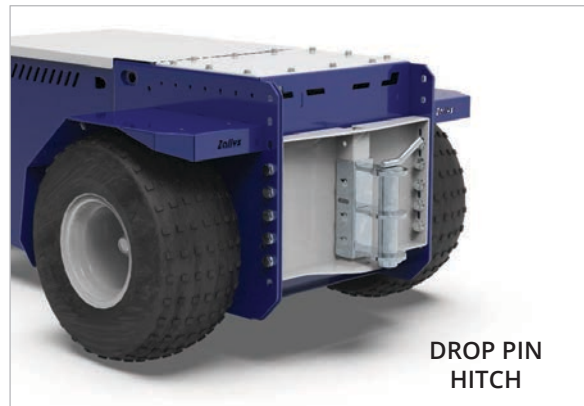
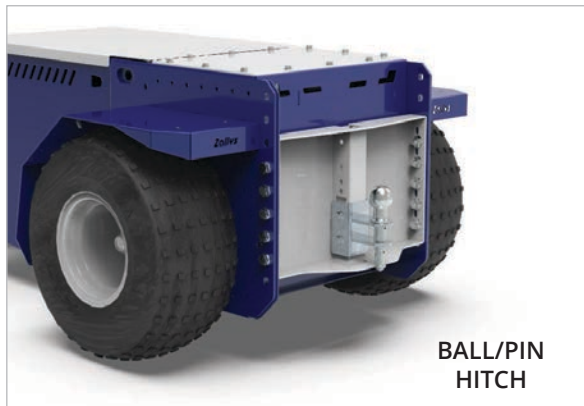
M10 is powered by four 250/335 Ah batteries, which guarantee the machine for **8 hours operation at continuous use**, and are easy to recharge thanks to the high frequency external battery charger.



Modular ballasts system

Zallys modular system guarantees **maximum flexibility** on increasing the vehicle's performances. With just **22 kg unit weight** (side ballasts) and **17 kg** (rear ballasts), single ballasts are lightweight and can be equipped **without physical effort by the operator**, while maintaining all their effectiveness.

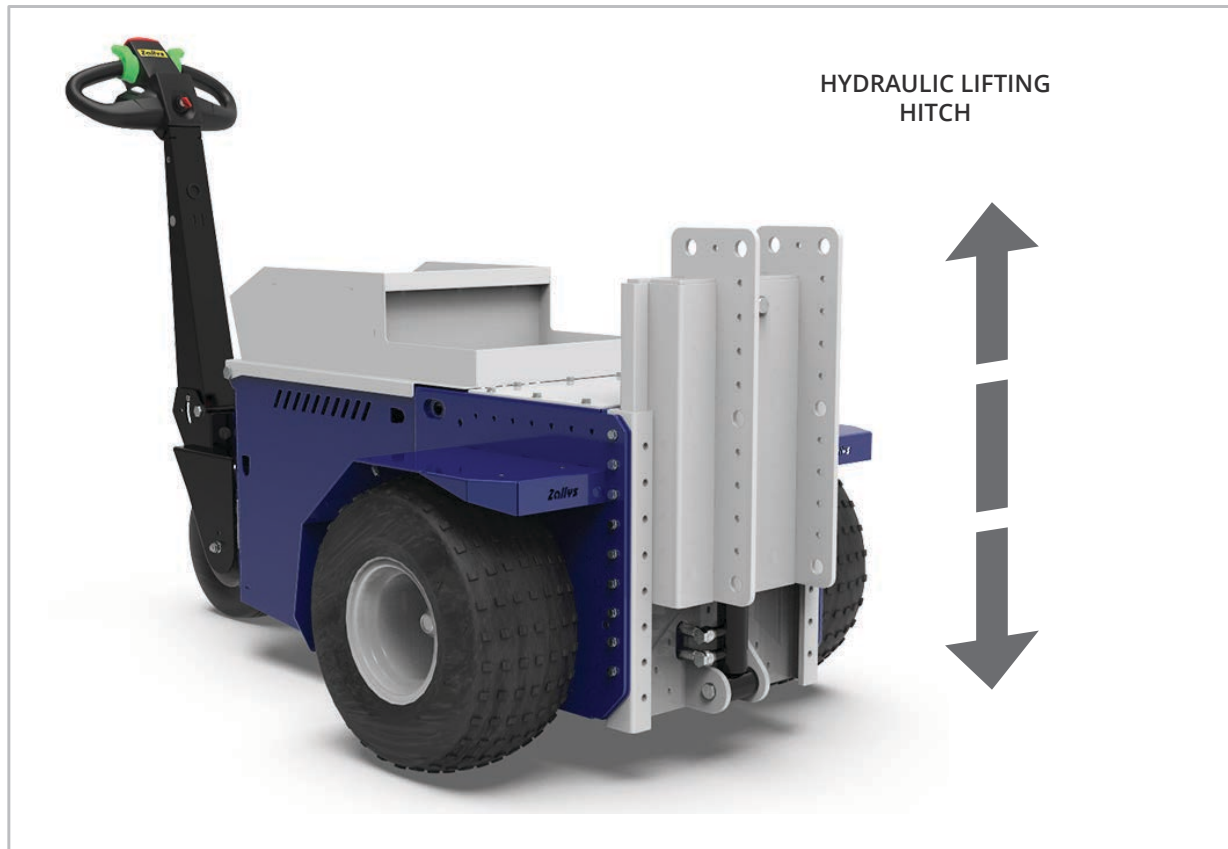
STANDARD HITCH



STANDARD HITCH

Hydraulic lifting system (optional)

On request, it is possible to equip **M10** with a **hydraulic lifting hitch kit**, which allows to lift and tow 2-wheeled trailers easily and safely, directly with the controls on the tillerhead.



ACCESSORIES

Side buttons (optional)

On request, it is possible to equip **M10** with a **kit of side buttons** to ease the connection operations. By pressing them, the operator can move the machine slightly forward or backwards, bringing it closer to the trailer to connect in a more precise way.

