

MANUAL GEARED TROLLEYS KITO TSG SERIES



Applications

- ✓ Mining, construction, engineering, infrastructure, manufacturing
- ✓ Ideal for processing plants, manufacturing plants, job sites, construction sites, projects

Features

- ✓ Manually operated, no electricity required.
- ✓ For curved beams where tight turns are required, Kito's TSG trolleys allow a low minimum turn radius.
- ✓ Engineered to be lighter and easier to install, the ½ to 10 tonne model TSG trolleys are specifically designed to be robust and durable, without unnecessary weight and bulkiness.
- ✓ TSG Trolley wheels are adjustable to work with both tapered and flat-flanged beams, allowing you to use existing equipment without customization.
- ✓ Lifetime-lubricated ball bearings also increase reliability and provide you with smooth operation while traversing a load.
- ✓ Japanese bearings used on wheels.
- ✓ Available with different connectors for use with different products.

The reliability, operational smoothness and safety of your hoist depends on the trolley. Heat-treated steel wheels, sealed bearings and a low-turn radius are just some of the benefits of a geared trolley from Kito.

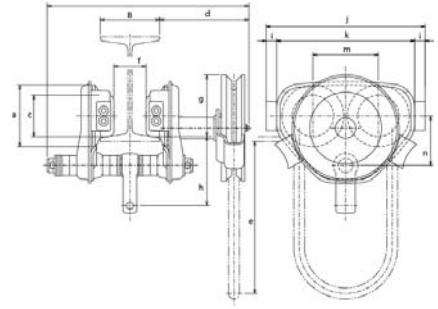
Capacity: 500kg – 10T



KITO TSG Series Manual Geared Trolleys



TSG
for ER2 electric chain hoist
with connector E



Specifications

Part No.	Capacity	Model	Standard Flange (mm)					Min. Radius for Curve (mm)	Net Weight (kgs)
			Standard	W20 Extension	W20 Extension Kit Part No.	W30 Extension	W30 Extension Kit Part No.		
47431	500kg	TSG005	58-127	128-203	47438	204-305	47439	1300	12.3
47432	1 tonne	TSG010	58-127	128-203	47438	204-305	47439	1300	12.3
47435	1.5 tonne	TSG015	82-153	---	---	154-305	47440	1500	19.1
47433	2 tonne	TSG020	82-153	---	---	154-305	47440	1500	19.1
47447	2.5 tonne	TSG025	82-153	---	---	154-305	47495	1700	27.2
47448	3 tonne	TSG030	82-153	---	---	154-305	47495	1700	27.2
47449	5 tonne	TSG050	100-178	---	---	179-305	47496	2300	56.7
47450	7.5 tonne	TSG075	150-220	---	---	221-305	47497	3000	117.9
47451	10 tonne	TSG100	150-220	---	---	221-305	47497	3000	117.9

Dimensions

Capacity	Model	a	b	c	d	e	f	j	h	i	j	k	l	m	n
500kg	TSG005	106	58 - 127	71	116	2200	B - 48	106	119	18	272	236	18	112	85
1 tonne	TSG010	106	58 - 127	71	116	2200	B - 48	106	119	18	272	236	18	112	85
1.5 tonne	TSG015	127	82 - 153	85	154	2700	B - 57	109	138	18	316	280	18	131	104
2 tonne	TSG020	127	82 - 153	85	154	2700	B - 57	109	138	18	316	280	18	131	104
2.5 tonne	TSG025	148	82 - 153	100	157	2700	B - 62	398	153	25	374	324	25	152	118
3 tonne	TSG030	148	82 - 153	100	157	2700	B - 62	398	153	25	374	324	25	152	118
5 tonne	TSG050	168	100 - 178	118	156	3200	B - 76	401	172.5	--	400	178	--	178	146.5
7.5 tonne	TSG075	185	150 - 220	155	182	3700	B - 90	165	117	25	542	492	25	196.5	230
10 tonne	TSG100	185	150 - 220	155	182	3700	B - 90	165	117	25	542	492	25	196.5	230