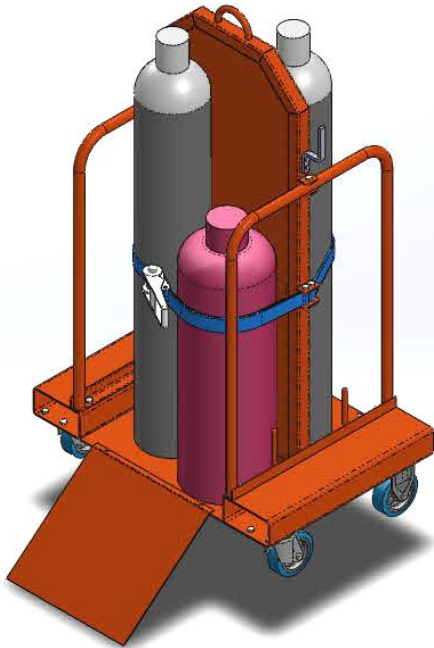


GAS BOTTLE TROLLEY MGC4 DIMENSIONS

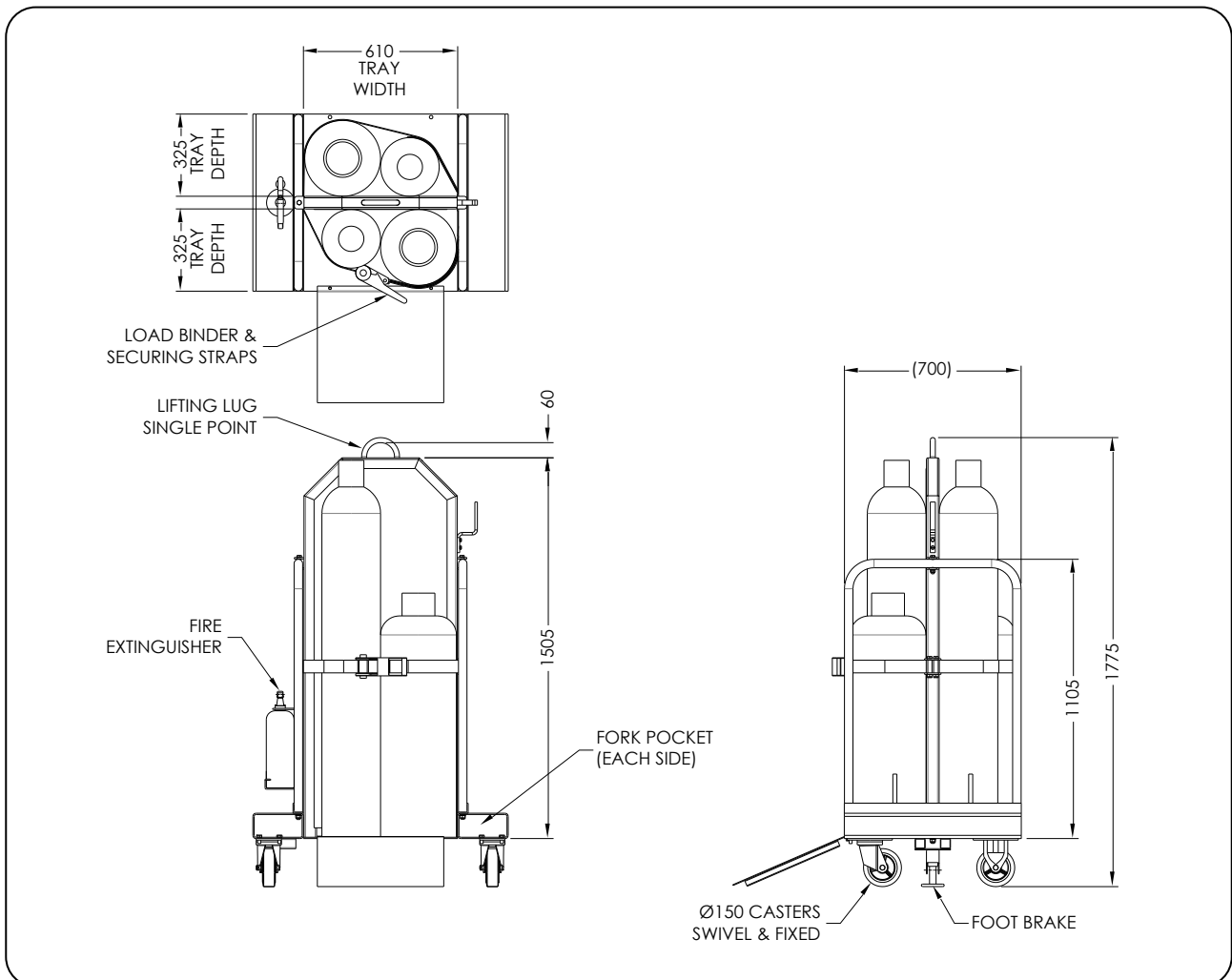


The type MGC4 Gas Bottle Trolley has been designed to suit two type "G" Oxygen and two type "G" Acetylene gas cylinders. Provision has been made to store all hoses inside the cage area. The cage is supplied with internal load binders and straps to securely fasten both sets of cylinders. Fitted with a two point Crane lift, Forklift pockets and 150mm swivel and fixed Casters, this cage can be transported manually, by Forklift or by Crane.

The standard finish on the Cage is painted enamel.

SPECIFICATIONS:

- Single point Crane lift
- Working Load Limits (WLL): 500kg
- Unit Weight: 115kg (includes wheels)
- Painted Finish
- Handy access ramp
- Foot brake fitted



Australia Wide Sales & Service

sales@materialshandling.com.au | www.materialshandling.com.au | 1300 65 00 35

MATERIALS
Handling PTY LTD *Working with ease.*