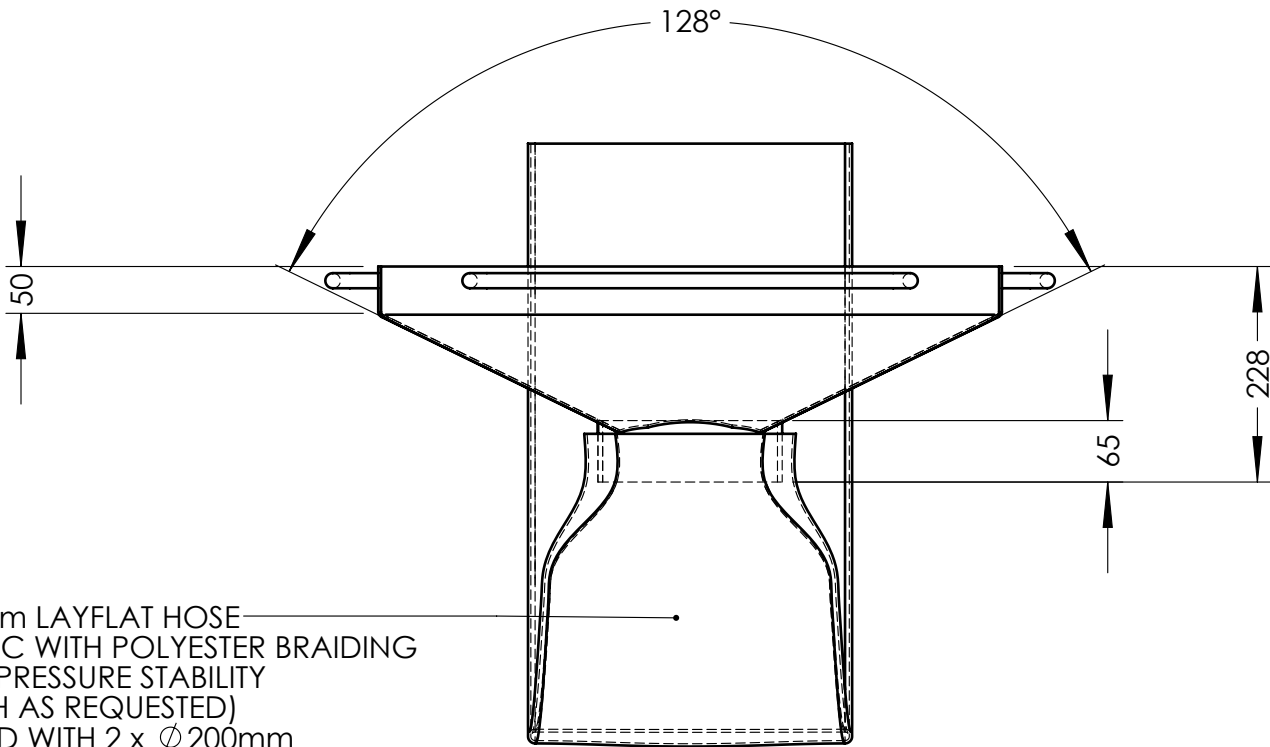
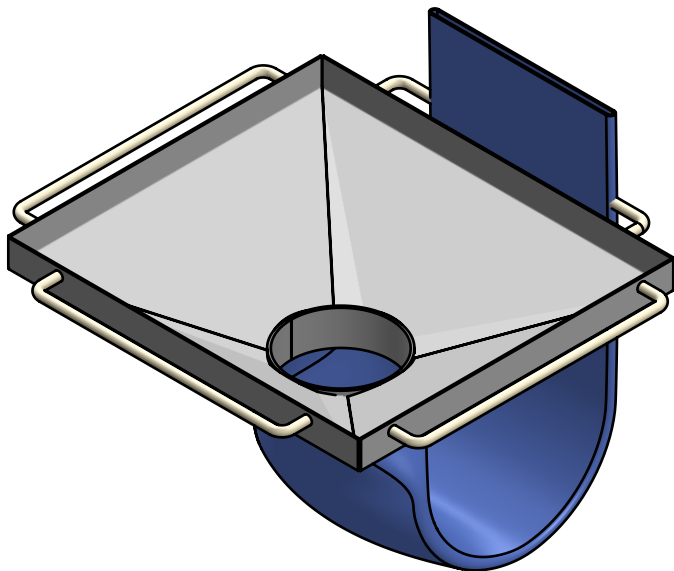
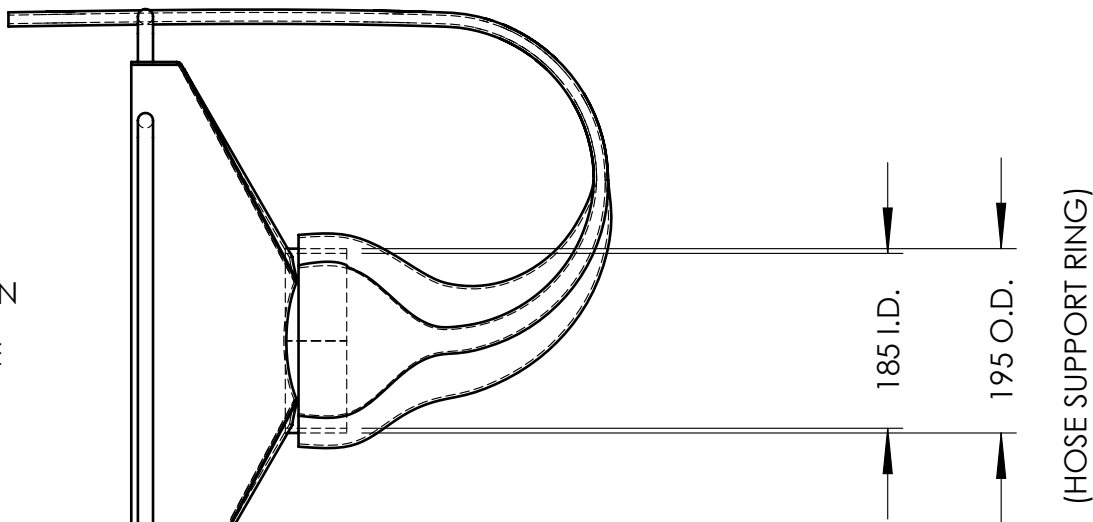
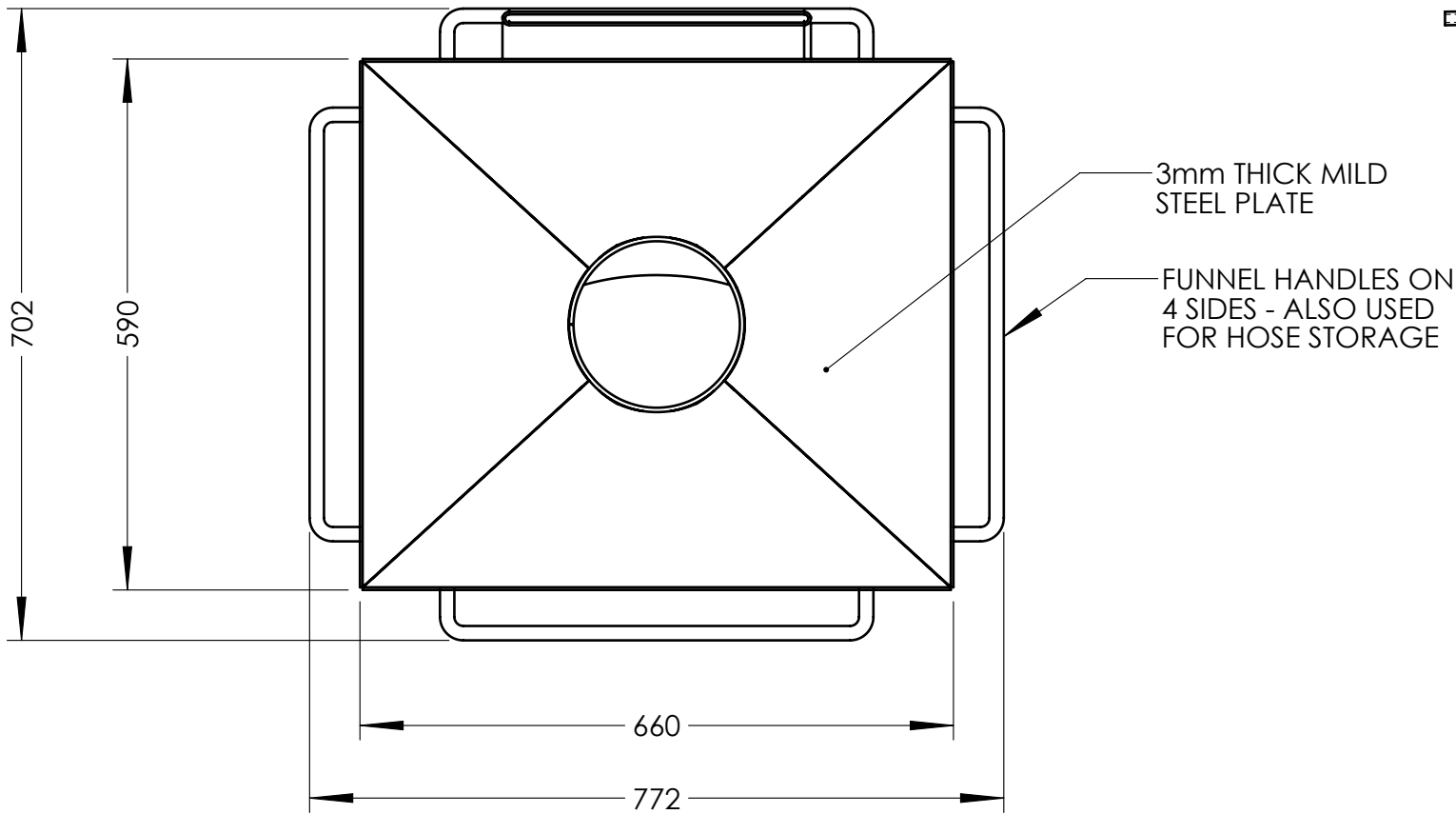


Iss	Date	Revisions	App.
A	11/8/14	RELEASE	



Ø 200mm LAYFLAT HOSE  
BLUE PVC WITH POLYESTER BRAIDING  
& LOW PRESSURE STABILITY  
(LENGTH AS REQUESTED)  
SECURED WITH 2 x Ø 200mm  
STAINLESS STEEL HOSE CLAMPS

**TYPE: MCKUF200**  
**UNIT WEIGHT: (17.5 + HOSE WEIGHT) KG**  
**HOSE WEIGHT = [HOSE LENGTH (in Metres) x 1.4] KG**  
**FUNNEL TRAY USED IN CONJUNCTION  
WITH CONCRETE KIBBLES**

JOB:	No Req:	Protective Finish: PRETREAT & ENAMEL PAINT COLOUR: 'SAFETY YELLOW'	WELDING UNLESS OTHERWISE SPECIFIED All welding to be in accordance with AS/NZS 1554.1:2011. All Welds to be 6mm Continuous Fillet Welds.	Title: KIBBLE UNIVERSAL FUNNEL TRAY
		DO NOT SCALE IF IN DOUBT - ASK DRAWN TO AS1100 ALL DIMENSIONS IN MILLIMETRES	MATERIALS Handling PTY LTD Working with ease.	File: A3 DRG No.
		3RD ANGLE PROJ.		Ref: CK & CKM Scale: 1:8 Sheet 1 of 1
				MCKUF200-SALES