

Industrial wet and dry vacuum cleaner - 90L



High-impact, corrosion-proof wet and dry vacuum designed for industrial use.

- Powerful 2 motor, or 3 motor option, each motor 1000 watt power
- 90 litre tank capacity with practical drain hose
- Large rear wheels and front castors for easier manoeuvring
- Large rear handle for enhanced mobility
- One year commercial warranty
- Standard models include 2.5m flexible hose, chrome extension set, dry floor tool, squeegee tool, crevice tool, round brush, textile filter
- Pump out option available (MVH59PEP), with submersible pump for transfer of greater volume of waste water. Includes flexible 2.5m hose, chrome extension set, squeegee tool

Technical specifications

Description	Unit		
Part no.		MVH59PE MVH59PEP	MVH60PE
Input	Volts	240	240
Rated Power	Watts	2 x 1000	3 x 1000
Airflow	L/min.	6000	9000
Vacuum	mbar	190	205
Sound Pressure Level	dB(A)	65	66
Tank Capacity	L	90	90
Dimensions	mm (HxWxL)	930x480x620	930x480x620
Hose Length	m	2.5	2.5
Cable Length	m	10	10
Weight	kg	23(PE)/ 29(PE/P)	26
Accessory Diameter	mm	50	50

Specifications and details are subject to change without prior notice.

Accessories

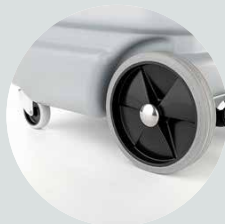
- VP6010500 - Flexible hose 2.5m
- VP2511600 - Chrome extension
- VP6010000 - Dry floor tool
- VP6010011 - Squeegee tool
- VP2511610 - Crevice tool
- VP2511615 - Round brush
- VP6830000 - Textile filter
- VP2512000 - PVC extension tube 500mm
- VP6830030 - Paper filter bag w/ cap 19L
- VP3001220 - Nylon filter
- VP2512610 - Carpet tool
- VP6200150 - Antifoam device
- VP2512744 - HEPA filter
- VP2512743 - Cartridge filter
- VP5830022 - 500mm accessory set - 3m flexible hose, extension set, round brush, crevice tool, adjustable wet floor tool, 50mm connection



Ergonomic handle



90L shock-proof container



Front castor wheels, rear large wheels



Drain hose



Motor head quick release

Australia Wide Sales & Service

sales@materialshandling.com.au | www.materialshandling.com.au | 1300 65 00 35

MATERIALS
Handling PLY LTD *Working with ease*