

Industrial Swing Gate

Manual and Self-Closing Swing Gates

PRODUCT GUIDE / INSTALLATION PROCEDURE



Recommended Tool/ Equipment/ Hardware:

- Utility Knife
- Chalk for Marking Concrete, Chalk Line
- String Line or Laser
- Tape Measure
- Spirit Level
- Hammer Drill with the Appropriate Drill Bit
- Spanners or Impact Driver with the Appropriate Socket
- Marker
- Brush/ Vacuum
- Appropriate PPE

As required

- Soft Faced Hammer
- Packers
- SLL-PR Slot-lok Latch (sold separately)
- ^ Mounting and Receiver Bollard or Post

^ All components sold separately

^ Recommended Mounting Bollard 140mm or above

^ Recommended Receiver Bollard 90mm or above

OPTIONAL - SLL-PR SLOT-LOK LATCH



The Slot-lok Latch (SLL-PR) allows for two swing gates to be joined together. If requested at the time of ordering, the latch will come pre-assembled into the rail with no assembly required. Care must be taken to ensure that the installed dual gates are level to allow for smooth movement of the slot lock latch.



Note: Mounting hardware is not supplied.

INSTALLATION PROCEDURE



BEFORE YOU START! Consider the following:

- Ensure the mounting and receiver posts are plumb and rigid.
- For wall mount installation, make sure the structure is appropriate for the installation.
- Consider the space required for the desired accessible opening and allow the gate to swing open completely; Refer to Figure (1) for details.
- Ensure the safe operation of the swing gate.

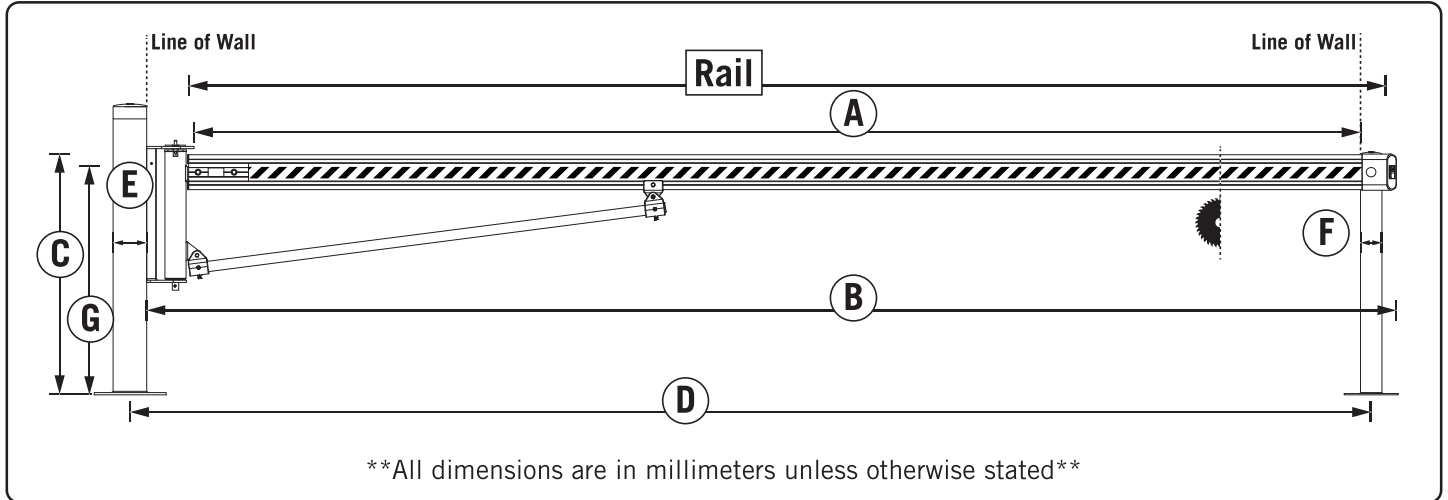
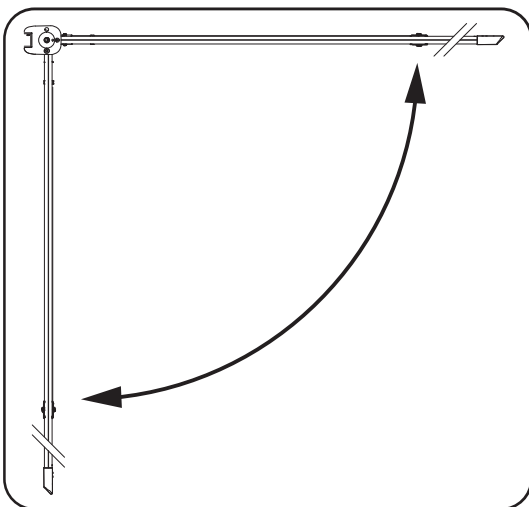


Fig.(1) Accessible Opening (A), Overall Length (B), Recommended Floor to Top of Rail Height (C), Post Center (D), Recommended Mounting Post (E), Receiver Post (F), and Top Mounting Position (G).

	Rail	A	B	C	D	E	F	G
MAX	6000^	5860	6215	1040	6175	140	90	1000
Standard	5000	4860	5215		5175			
MIN	2000	1860	2215		2175			

1. Follow the procedures **AFTER** the installation of the required mounting and receiving posts. Refer to Fig. (1) for the post centre required for the preferred opening.

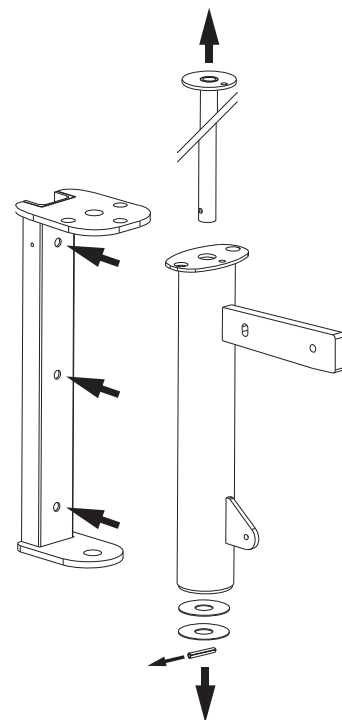


For Self-Closing Swing Gate only:

To avoid damage to the gate mechanism, ensure the gate does not exceed 90 degrees of travel.

2. Remove the lower roll pin from the housing and remove the swing gate mechanism.

Step 2



INSTALLATION PROCEDURE (CONT'D)

3. Mark the layout and positioning of the gate on the intended installation area's surface. Use the gate mounting bracket to guide accurate hole centre placement.
4. Dismount the gate mounting bracket and drill holes as marked. Refer to Fig. (1) for recommended mounting heights. Use a tape measure for accuracy. Remove any exposed burrs or sharp edges from drilled holes.

Be sure to use the appropriate fixings to attach the mounting bracket to the supporting structure and that all fasteners are positioned to allow clearance on the rotating gate assembly.

Barrier Group recommendation:

- Heavy wall post:

Drill and tap to suit M12 x 60mm bolts, washers, and spring washers.

- Thin wall post:

Drill through and use M12 all thread with a washer, and spring washer on both sides.

- Wall or other structure:

Use the appropriate fastening hardware following a qualified professional's instructions.

For Self-Closing Swing Gate's installation only:

Take note of the gate swing direction. Attach the self-closing arm bracket to the mounting bracket following Fig.(2).

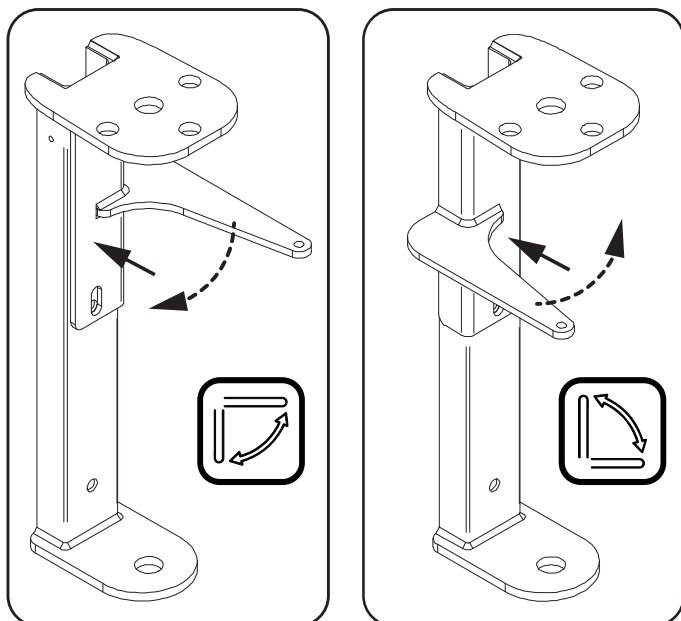


Fig.(2) **For Self-Closing Swing Gate only:** Attach the self-closing arm bracket to the mounting bracket.

5. After attaching the mounting bracket and tensioning the fixings, proceed to reinstall the components removed in Step 2, following Fig.(3).

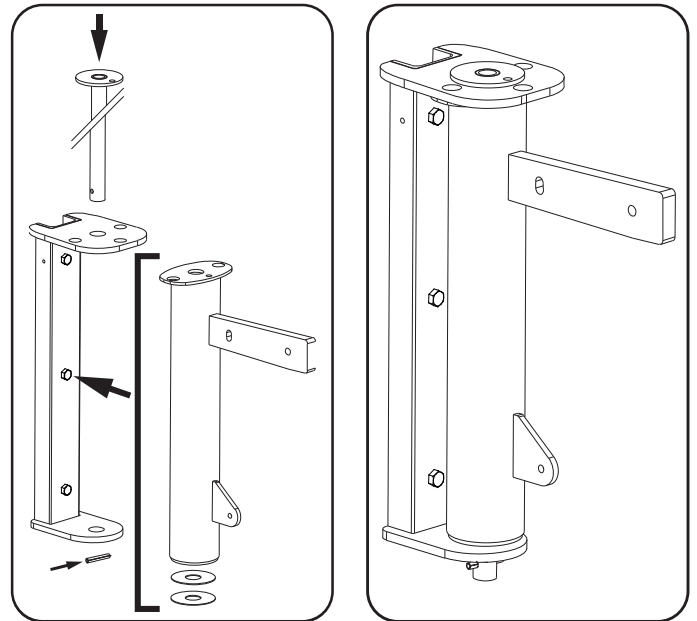
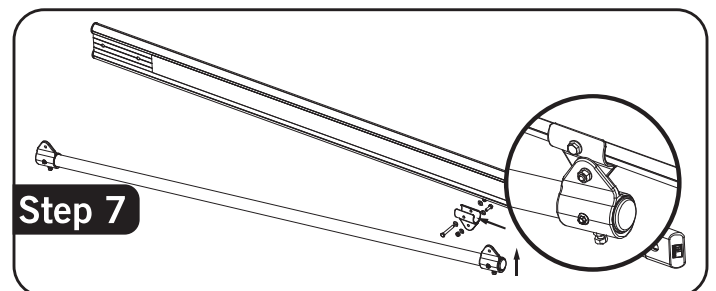


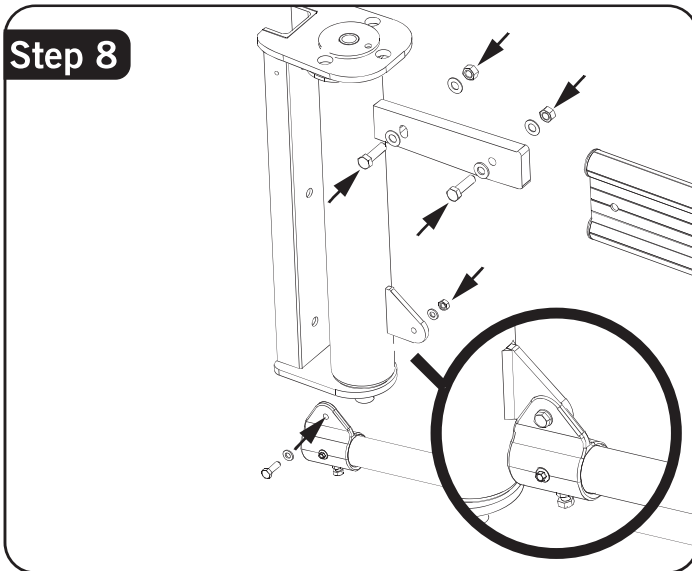
Fig.(3) Re-assemble the mounting bracket.

6. Measure and cut the gate rail to size to suit the opening if necessary. The typical rail length is 5000mm. Barrier group recommends cutting from the receiver rail end. Be sure to redrill the 40mm diameter receiver hole as required. Remove any exposed burrs/ sharp edges from cut ends and replace the end boot. Cut the bracing to suit the modified gate rail.
7. Slide the bracket along the bottom side of the rail, take note of the offset direction of the bracket, and attach the bracket to the gate rail.

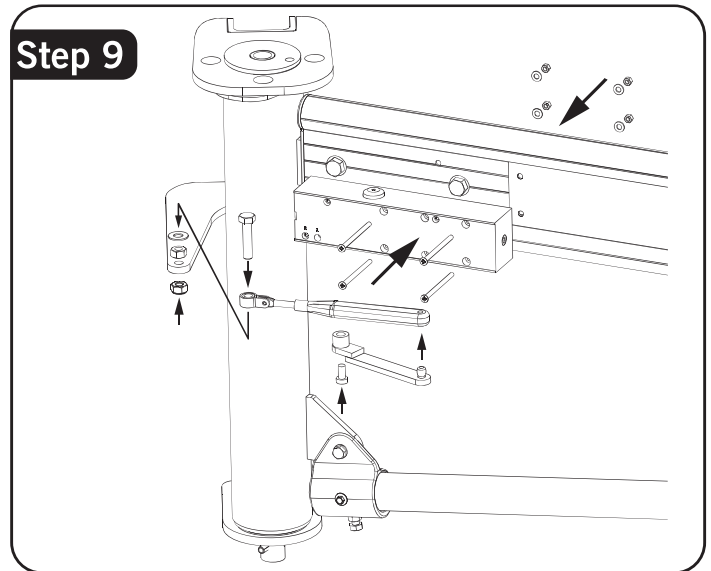


Step 7

8. Fully insert the gate rail into the gate mounting arm. Install the gate rail with the supplied M12 x 40mm mounting bolts, washer and nuts, and supporting brace to the mounting bracket. Do not tighten the rail bolts.

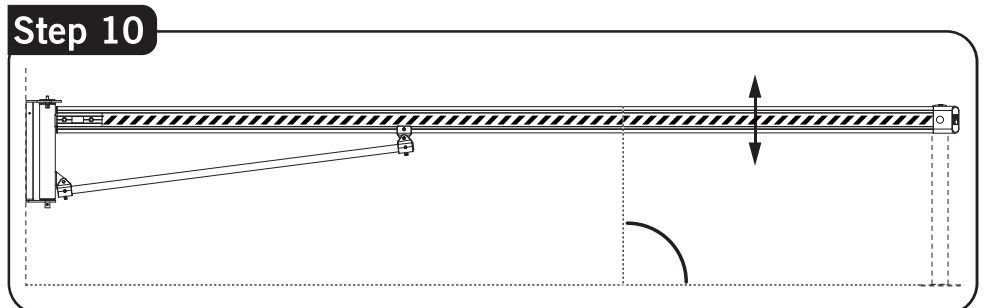


9. **For Self-Closing Swing Gate's installation only:** Install the Dorma closer with the supplied M5 bolts, washers and nyloc nuts. Be sure to attach the Dorma closer at the correct unit orientation. Then, attach all the closer arm with the supplied fixings.



GATE RAIL ADJUSTMENT

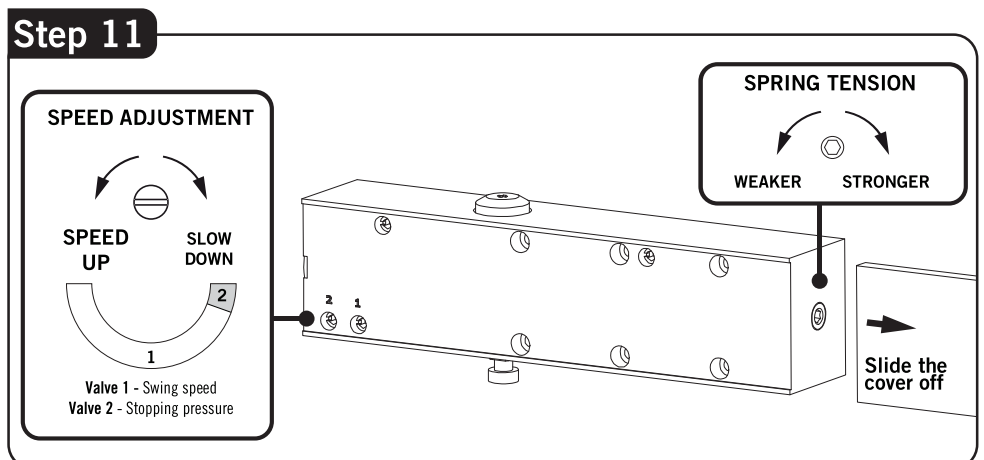
10. Move the rail up to counteract the natural deflection over the gate span. With an assistant, hold the rail in an elevated position, tighten the rail bracing bolt to ensure the rail sits level once in position.



11. **For Self-Closing Swing Gate's installation only:** Adjust the gate swinging speed. Adjust the gate speed before first use to ensure the proper operation of the gate. **The gate MUST NOT slam shut.**

12. Test the gate function and adjust if necessary. Once satisfied, tighten all the fixings adequately.

13. If required, install the stopper to the receiving post or structure.



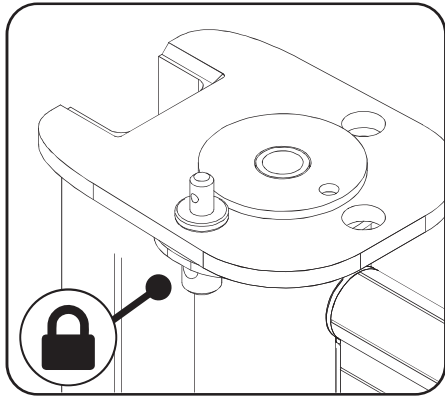
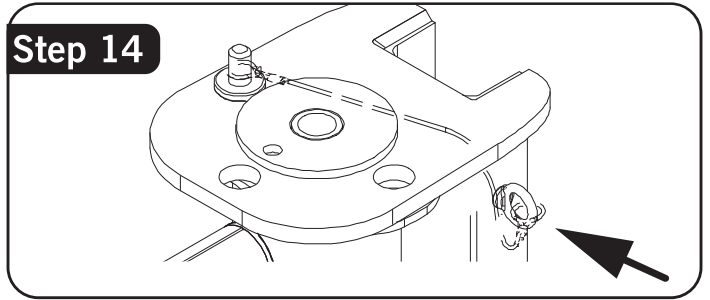
INSTALLATION PROCEDURE (CONT'D)

14. Attach the eye nut to either side of the mounting bracket.

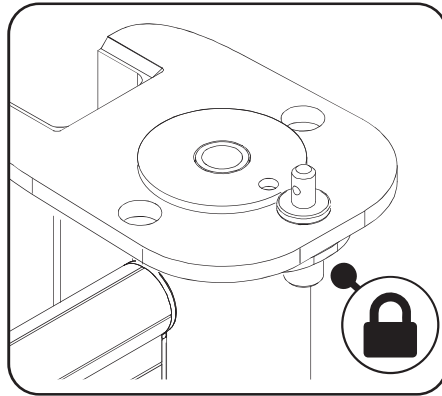
15. To keep the gate open or shut in position, insert the tethered pin through the hole in the mounting bracket. Use a padlock to prevent unauthorised access or interference.

16. Clean the work area and remove all debris and hazards from the installation site.

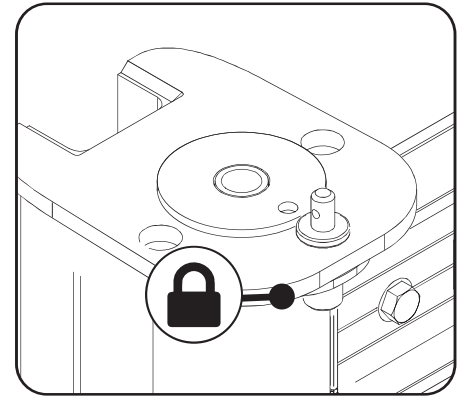
Step 14



0 degrees

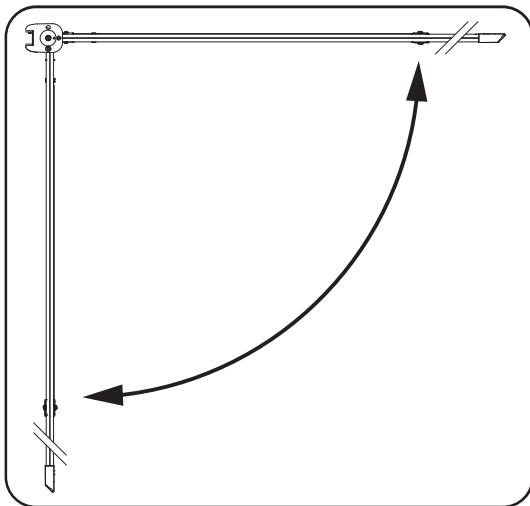


90 degrees

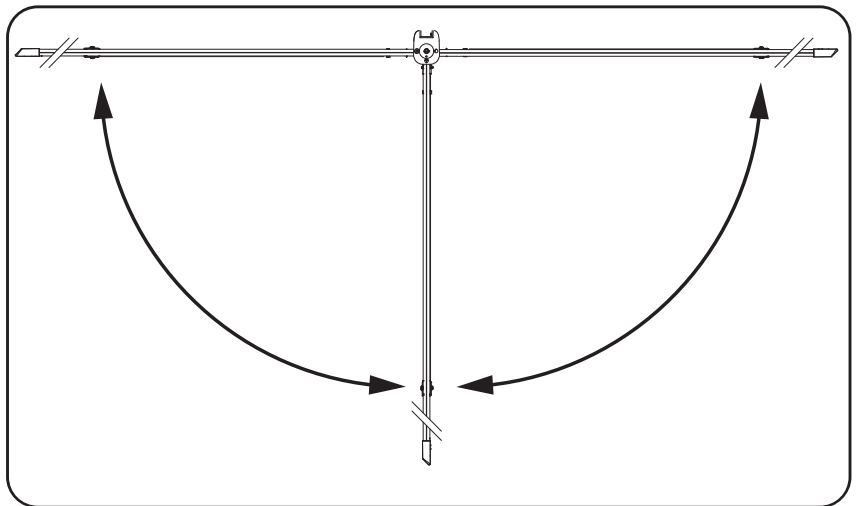


180 degrees *Manual Swing Gate Only

WARNING: THE SELF-CLOSING SWING GATE IS DESIGNED AS A SELF-CLOSING SAFETY GATE.
This holding accessories shall only be used temporarily in a monitored environment.



For Self-Closing Swing Gate only:
To avoid damage to the gate mechanism, ensure the gate does not exceed 90 degrees of travel.



For Manual Swing Gate only:
The swing gate can swing up to 180 degrees.

INSTALLATION CHECKLIST

- Ensure that the post and rail are levels, plumb and rigid.
- Tighten all fixings adequately.