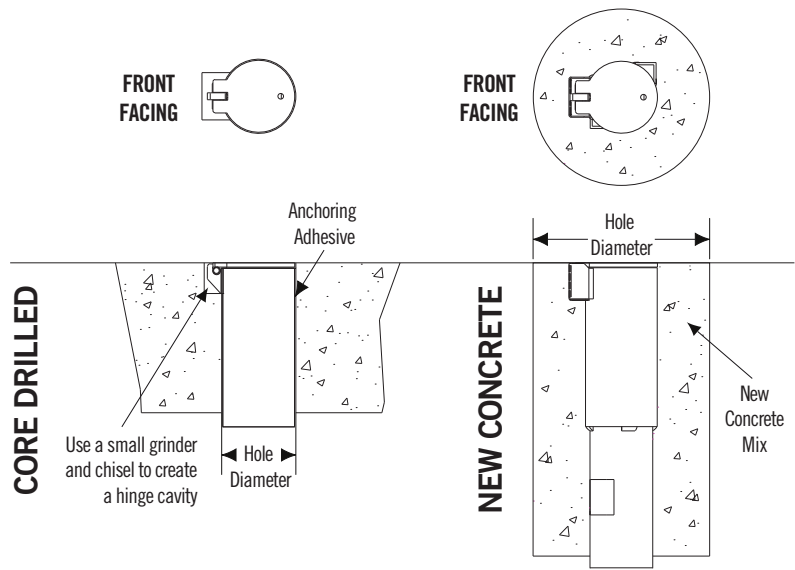


# Removable Bollards Sleeve-Lok & Cam-Lok

## Installation Procedure

### Sleeve installation



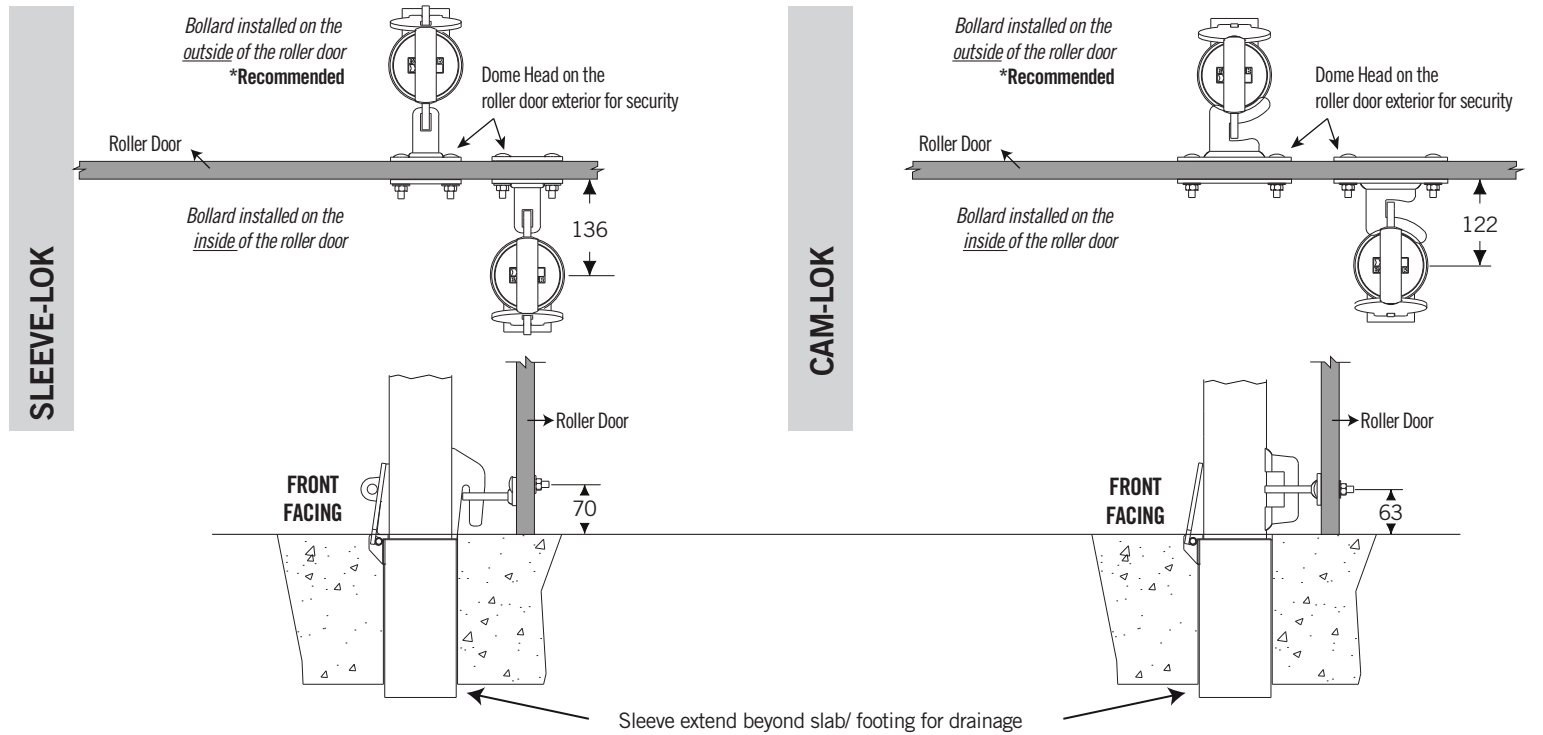
#### Core Drilled *Recommendation only.*

Product	Hole Diameter
BSL63S-CD	82mm
BCL90S-CD / BSL90S-CD	105mm
BCL140S-CD / BSL140S-CD	169mm

#### New Concrete *Recommendation only.*

Product	Hole Diameter
BSL63S-NC	260mm
BCL90S-CD / BSL90S-CD	340mm
BCL140S-CD / BSL140S-CD	400mm

### Roller Door Bracket installation



**Important information.**  
**Read carefully.**  
**Keep this information**  
**for further reference.**

**WARNING**  
No guarantee will be given or responsibility accepted by the manufacturers if the product is not installed as instructed.

- BEFORE YOU START**
1. Check all parts are included. Contact your supplier immediately if you are missing a piece.
  2. Make sure the installer is equipped with appropriate PPE and tools.

- INSTALLATION NOTE**
1. Ensure that the sleeve and bollard has been installed correctly and that the sleeve and bollard is level, plumb and rigid.
  2. Ensure sleeve sits level with the slab when the lid is shut.
  3. Ensure the lid won't be concreted shut: lift the lid and clear any excess concrete that may be sitting over the wall of the sleeve.
  4. Installed sleeves must penetrate the concrete to allow for drainage to the sub-soil.