

Working with ease...

ALTRAC - Lightweight Crane Systems

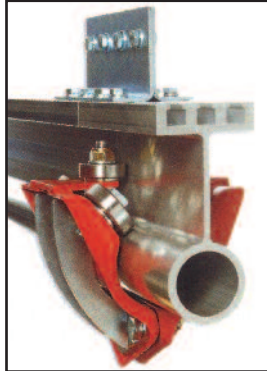
An Overview of Altrac Rail Systems

Altrac is a lightweight, low-maintenance, attractive adaptable and safety tested aluminium rail system that can be tailored to almost any application including workstation cranes, jib cranes, overhead gantry cranes, monorail cranes and fall arrest height safety systems. Altrac rail weighs only 7kg/metre.

An adjunct to the Altrac rail is the StrongBac extruded aluminium section. It is designed for use with Altrac extruded aluminium rail system so that it will increase the span length between supports, without complicated installation or excessive weight added. All Altrac crane products are compliant with Australian safety codes, including Australian Crane Code AS1418.

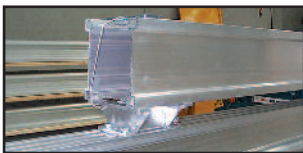
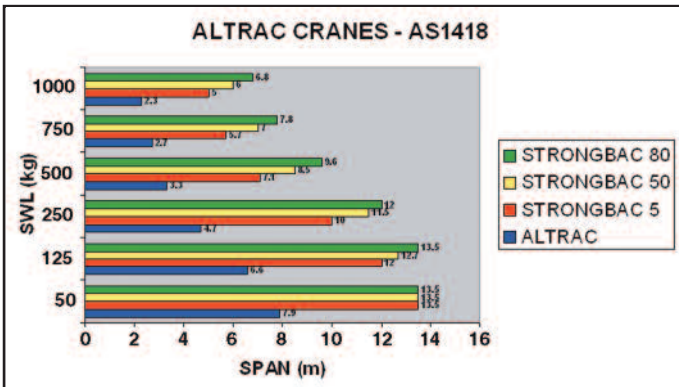
Altrac Fall Arrest Rails

The Altrac rail, plus the 500kg capacity trolley, conforms to AS 1891.2 for horizontal lifeline & rail systems. They are rated at 15kn for single person & 21kn for dual persons applications and are ideal for fall arrest height safety systems.



StrongBac Upgrade for Altrac Rail

By bolting the lightweight StrongBac truss to the top of the Altrac rail the capacities of our light crane systems can be considerably improved. The "LP" (5mm, low profile) or the HL (50mm high load) spacing modules, improve the capacities according to the charts on this page.



By bolting the Strongbac section to the top of the Altrac rail the capacity can be substantially improved



A 500kg x 10m span Altrac/Strongbac installation

Altrac Lightweight Gantry Cranes

Freestanding or Ceiling mounted

The Altrac gantry crane system offers a level of adaptability not found in similar systems.

The unique design of the six-wheel trolleys allows them to run smoothly even when the gantry cross travel beam is slewed to one side or moving around a bend. This means the trolleys won't stick or require additional effort from the crane operator.

The bridge gantry crane system is ideal for full work station coverage and can be mounted freestanding on the floor or from the roof. The lightweight aluminium structure requires few supports and can be easily mounted to most existing roof structures. Roof mounting a gantry crane also keeps floor space clear for trucks or forklifts while still allowing materials to be moved long distances in any direction.

Another advantage of the bridge gantry crane system is that it can accommodate up to 1000kg MRC (maximum rated capacity) and handle any type of lifting mechanism. Manual, electric, pneumatic or vacuum hoists can be attached. They are an ideal partner for our Quick Lift intelligent lifting devices, our range of Movomech lifters, the Vaculex vacuum tube lifters or any electric or air hoist.

Altrac Gantry Cranes are compliant with Australian safety codes, including Australian Crane Code AS1418.

Ask our sales facilitators for assistance to help you custom order Altrac Gantry Cranes.



Altrac freestanding gantry crane with a chain block and Altrac trolley



Altrac, ceiling mounted, gantry system shown here with our "XN" Electric Hoist