

Working with ease...

Pallets

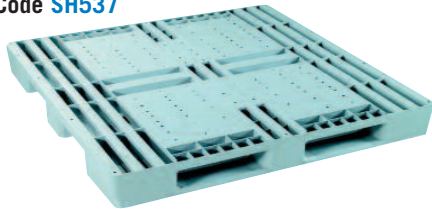
Plastic Pallets

These pallets are injection moulded & heat compression welded from high-density polyethylene (HDPE) with a cellular design for maximum strength and rigidity. They are 100% recyclable & are able to be hot washed, steam cleaned or chemically sterilised. They also have a very high chemical resistance, particularly to acids and alkalis. Compared to timber pallets, they have a longer life span, are less prone to product damage, are more workplace health & safety compatible, are lighter in weight & have consistent dimensions. They are readily accepted in food production areas, as there are no nails, no splinters & no rust.

Plastic Pallet

These are rugged one-piece recyclable plastic construction, for weights up to 1000kg on the fork and up to 4000kg when stacked. Measuring 1168mm x 1168mm (standard Australian size), weighs 16kgs and has four way fork truck entry. We also supply pallet inverters transfer loads from your plastic and steel pallets to standard two face timber pallets. See index under "pallet inverters".

Code **SH537**



Standard Pallet

This is a long life, clean, light & hygienic pallet in the Australian standard size.

Code **SOZ1165**

Type Grill top deck - Grill base

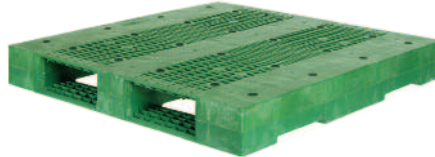
Size 1165 x 1165 x 150 mm (+/- 5 mm)

Weight 27kg Colour Green

SWL 2,000kg in beam racking, 1.350kg in drive in racking, 10.000kg static load

Application All food processing plants, meat and pharmaceutical industries

Entry points Two-way forklift & pallet jack



Export Pallets

When inexpensive, one-way export pallets are required these two "fit the bill". They do not require fumigation, are always pest free & address all export regulations. The **SEXPAL1140** is the most economical.

Code **SEXPAL1100**

Type Grill top deck - grill base

Size 1100 x 1100 x 120 mm (+/- 5mm)

Weight 7.6kg Colour Black SWL 1000kg

Application Export and general purpose

Entry points Four-way forklift & pallet jack



Display Pallet

Three of these pallets fit across a standard truck's width. They afford easy unit handling, are lightweight, sturdy & easily stacked.

Code **SDIS**

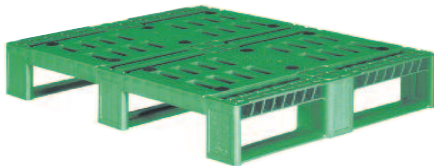
Type Grill top deck - grill base

Size 775 x 590 x 160 mm (+/- 5mm)

Weight 7kg Colour Grey SWL 500kg

Application All food processing plants, meat and pharmaceutical industries

Entry points Four-way forklift & pallet jack



Export Pod

A nest able, inexpensive pod pallet used mainly for one-way export.

It does not require fumigation, is always pest free & addresses all export regulations.

Code **SEXP001210**

Type/Ratio Grill deck/nest able 4:1 ratio

Size 1200 x 1000 x 140 mm (+/- 5 mm)

Weight 8kg Colour Black

SWL 2000kg static load, 400 kg dynamic load

Application One-way export, no fumigation

Entry Points Four way fork lift & pallet jack



Code **SEXPAL1140**

Type Grill top deck - grill base

Size 1140 x 1140 x 120 mm (+/- 5mm)

Weight 8.4kg Colour Black SWL 1000kg

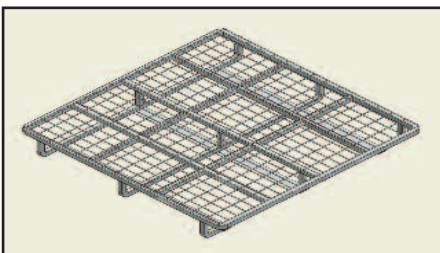
Application Export and general purpose

Entry points Two-way forklift & pallet jack

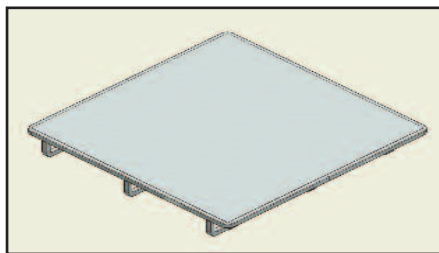


Steel Pallets

These 1000kg capacity pre galvanised pallets are 1168 x 1168 x 125mm high. They are manufactured from 25 x 25 x 1.6mm tube and have either 75 x 50 x 4mm mesh or 1.6mm galvanised sheet tops.



SH801 Pallet with mesh top



SH802 Pallet with sheet top

Pallet Feet

Punch formed, unpainted, steel pallet feet for square & round tube.



Code **SMA01**
Round feet



Code **SHIO2**
Square feet