

Working with ease...

ALTRAC - Lightweight Crane Systems

Altrac Bracket Systems

The key to the ease of assembly of the Altrac system is the range of standard brackets and mountings plus the provision of 'T' slots in the extruded track section upper flange to allow the use of captive nut fasteners. The three slots give unlimited scope for positioning of suspension brackets and mounting locations. This also provides easy mounting of ancillary equipment such

as collector rails, catenary systems, electrical equipment, air lines and fittings.

A full range of structural brackets is available to easily and safely install and support the complete system. All that is required is a single spanner and an electric drill. The system being lightweight and modular can be quickly and easily installed allowing for future modification, extension or relocation. All

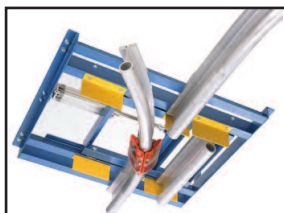
brackets and fixtures are zinc plated for corrosion resistance. Fasteners are grade 8.8. Brackets and Mountings are supplied complete with rivets (where necessary) bolts, nuts and washers.

It's so easy.

LAT30

Two-way switch can be manually, electrically or pneumatically operated. Also available as a 3 way

LAT34. 500kg MRC.



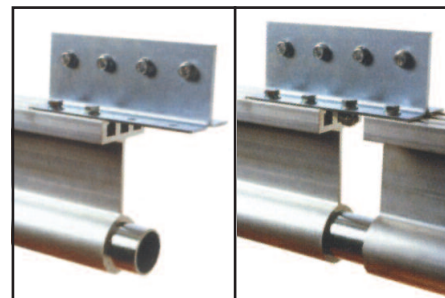
LAT34

Four-way turnout for 900 trolley reorientation. 300kg MRC.

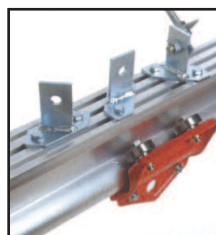
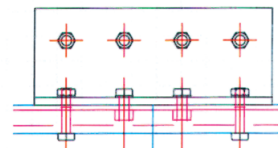


LAT64

Universal beam clamp for easy flexible suspension options, 200-460mm range.

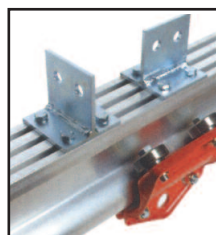
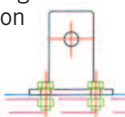


LAT01 Splice Kit - To join/extend the Altrac system is easy. Just slip on the splice plate, splice tube and rivet the underside of the Altrac.



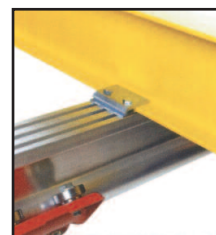
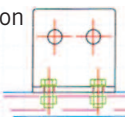
LAT03

Single Bolt Hanger - Maximum capacity 250kg. Mounts parallel, 90 degree and 45 degree for suspension and bracing.



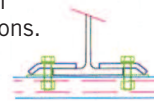
LAT02

Two Bolt Hanger - Maximum capacity 500kg. Mounts parallel and 90 degree for suspension and bracing.



LAT11

Beam Clamp - Maximum capacity 500kg. For mounting Altrac 90 degree to universal beam sections.



Altrac Trolleys

LTT01

Basic 4 wheel unrated trolley. Note: Not rated for hoisting application suitable for static loads only. Powder coated side plates. 150kg capacity.



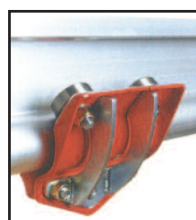
LTT05

Fitted with 4 load and 2 side guide wheels to accommodate side loading. Powder coated side plates. 220kg MRC.



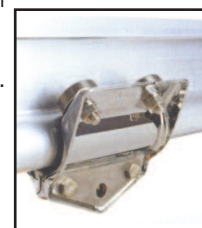
LTT07

Basic 4 wheel rated trolley. Powder coated side plates. 500kg MRC.



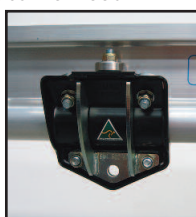
LTT29

Basic 4 wheel rated trolley. Stainless steel components with copper nickel chrome side plates. 220kg MRC.



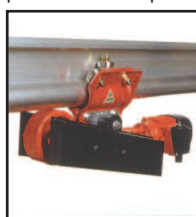
LTT56

Basic 6 wheel rated trolley with Stainless Steel Components. Ideal for food and beverage handling. Trolley shown is rated up to 500kg and has E-Coat side plates. 500kg MRC.



LMT01-1/15

Motorised Trolley Patented friction drive with proportionate tractive effort. 1-15 metres per minute. 3ph 415V via collector rail or flat cable catenary. Depicted mounted from LTT05 trolley.



LTT06

Trolley fitted with 10 bearing wheels to provide guidance in all directions. Suitable for bridge gantry and uplift applications. Powder coated side plates. 220kg MRC.

